

Installation Instructions



No-Till Precision Seeding System Baffle Package Option

Used with:

- 15P
- 20P
- 30P
- 40P



When you see this symbol, the subsequent instructions and warnings are serious - follow without exception. Your life and the lives of others depend on it!

General Information

These instructions explain how to install the Baffle Package Option. The baffle package stops the flow of grain to a set number of seed tubes by covering those tubes.

These instructions apply to:

118-833A	15P 7 1/2" to 30" Baffle Package
118-834A	20P 7 1/2" to 30" Baffle Package
118-835A	30P 7 1/2" to 30" Baffle Package
118-856A	40P 7 1/2" to 30" Baffle Package

Manual Update

Refer to the No-Till Precision Seeding System operator's manual for detailed information on safely operating, adjusting, troubleshooting and maintaining the No-Till Precision Seeding System. Refer to the parts manual for part identification.

118-732M	Operator's Manual
118-732P	Parts Manual

118-740M	Operator's Manual
118 740P	Parts Manual
196-248M	Operator's Manual
196-248P	Parts Manual
196-286M	Operator's Manual
196-286P	Parts Manual

Before You Start

Pages 8 and 9 are a detailed listing of parts included in the Baffle Package Option. Use this list to inventory parts received.

Tools Required

- Basic hand tools

Definitions

Right-hand and left-hand as used in this manual are determined by facing the direction the drill will travel while in use.

Assembly Instructions for 118-833A Baffle Package

Refer to Figure 1

1. Loosen fasteners on left inside of right box (1) as shown in figure 1. Place outer end box clip (2) over bolts and retighten fasteners. Loosen fasteners on right inside of right box and place inner box end clip over bolts and retighten. Be sure clips are pushed down on bolts. Assemble the clips in the same manner for all boxes.

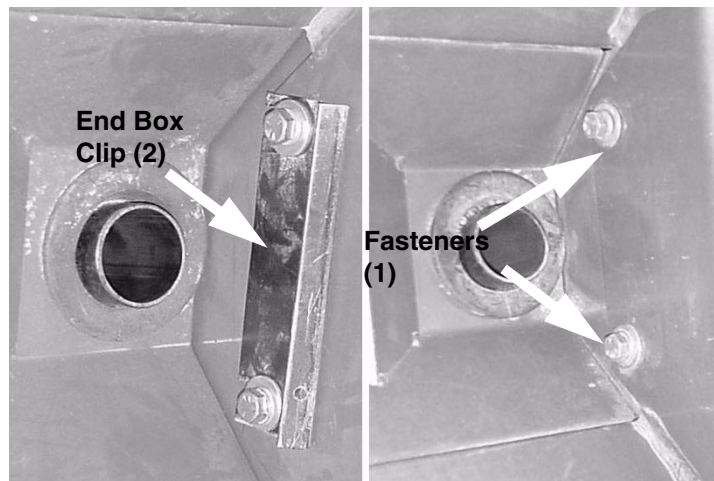


Figure 1
Box Ends

19249

Assembly Instructions for 118-833A Baffle Package

Refer to Figure 2

2. Line meter covers with foam seal all the way around the edges.
3. Place meter cover over tube outlets not being used. Place Seedtube corks in tubes at each end of the box. See note at bottom of page for placement. Make sure there is a good seal to rear box panel.



Figure 2
Foam Seal

19253

Refer to Figure 3

4. Use tarp strap to hold meter covers in place by fastening one end to the box end clip pulling it over the meter cover and hooking it to the center divider.



Figure 3
Box Divider

19246

NOTE: Refer to page 5 for illustration showing placement of seedtube corks and meter covers. Shut meters off that are not being used.

Assembly Instructions for 118-834A Baffle Package

Refer to Figure 4

1. Loosen fasteners on left inside of right box (1) as shown in figure 3. Place outer end box clip (2) over bolts and retighten fasteners. Loosen fasteners on right inside of right box and place inner box end clip over bolts and retighten. Be sure clips are pushed down on bolts. Assemble the clips in the same manner for all boxes.

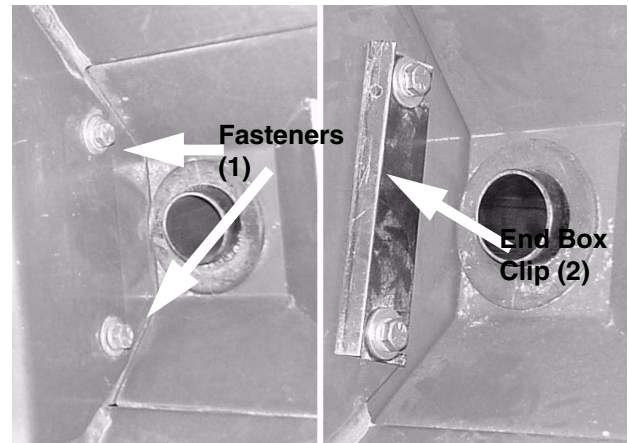


Figure 4
Box Ends

19249

Refer to Figure 5

2. Line meter covers with foam seal all the way around the edges. The two outside meter covers require an additional 4" strip to be added to both ends of the cover.
3. Place meter cover over tube outlets not being used. Place Seedtube corks in tubes at each end of the box. See note at bottom of page for placement. Make sure there is a good seal to rear box panel.



19253



19254

Figure 5
Foam Seal and 4" Strips

Refer to Figure 6

4. Use tarp strap to hold meter covers in place by fastening one end to the box end clip pulling it over the meter cover and hooking it to the center divider as illustrated in figure 6

NOTE: Refer to page 5 for illustration showing placement of seedtube corks and meter covers. Shut meters off that are not being used.

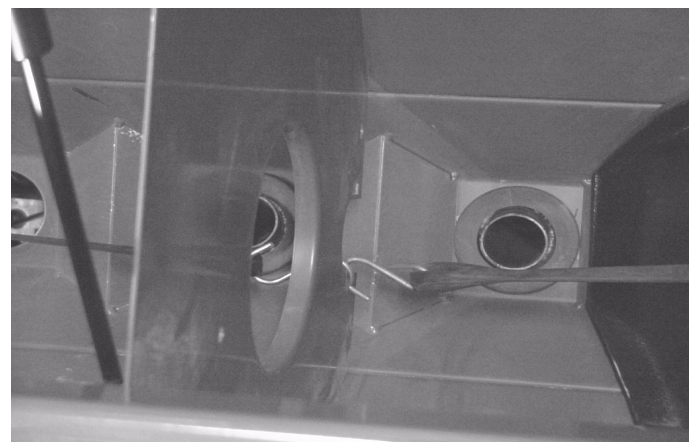


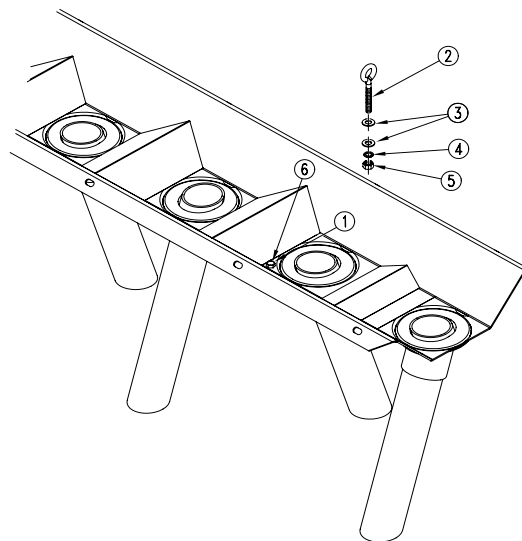
Figure 6
Box Divider

19275

Assembly Instructions for 118-835A Baffle Package

Refer to Figure 7

1. Using predrilled holes, remove bolt (1) from feeder cup tray and replace with eye hook (2), flat washers (3), lock washer (4) and hex nut (5) supplied in kit. Assemble the eyebolts in the same manner for all boxes. There are two eyebolts per feeder cup tray, one at each end of tray. Note: If there are no holes, drill 1/4" hole (6) on edge of outlets.



19251

Figure 7
Feeder Cup Tray

Refer to Figure 8

2. Line meter covers with foam seal all the way around the edges.
3. Place meter covers over tube outlets not being used. Place Seedtube corks in tubes at each end of the box. See note at bottom of page for placement. Make sure there is a good seal to rear box panel.

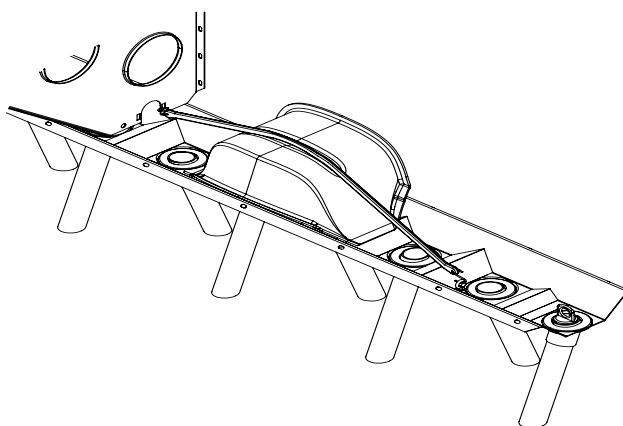


19253

Figure 8
Foam Seal

Refer to Figure 9

4. Use tarp strap to hold meter covers in place by fastening one end to the eye hook pulling it over the meter cover and hooking it to the box divider



19252

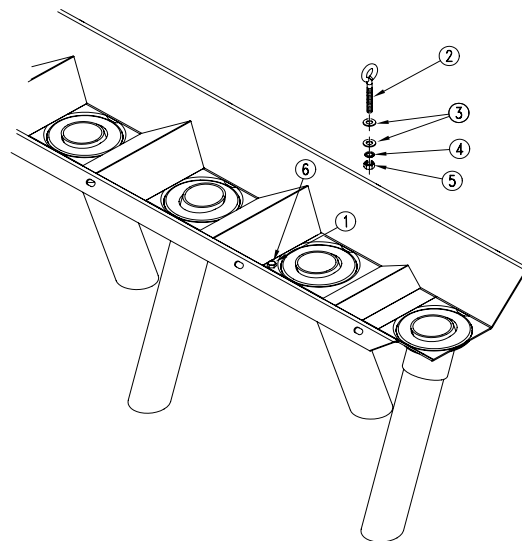
Figure 9
Eye Hook to Box Divider

.NOTE: Refer to page 5 for illustration showing placement of seedtube corks and meter covers. Shut meters off that are not being used.

Assembly Instructions for 118-856A Baffle Package

Refer to Figure 10

1. Using predrilled holes, remove bolt (1) from feeder cup tray and replace with eye hook (2), flat washers (3), lock washer (4) and hex nut (5) supplied in kit. Assemble the eyebolts in the same manner for all boxes. There are two eyebolts per feeder cup tray, one at each end of tray. Note: If there are no holes, drill 1/4" hole (6) on edge of outlets.



19251

Figure 10
Feeder Cup Tray

Refer to Figure 11

2. Line meter covers with foam seal all the way around the edges.
3. Place meter covers over tube outlets not being used. Place Seedtube corks in tubes at each end of the box. See note at bottom of page for placement. Make sure there is a good seal to rear box panel.

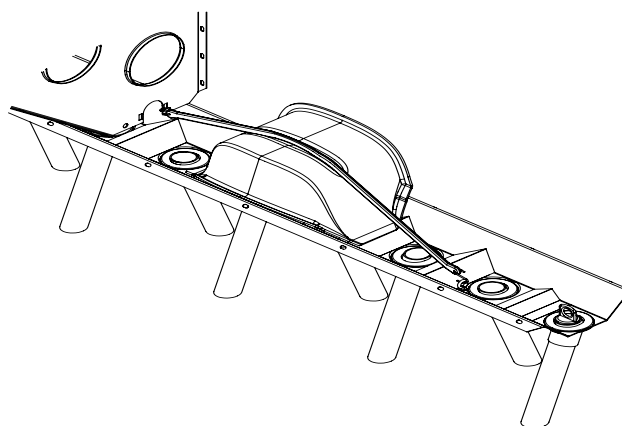


19253

Figure 11
Foam Seal

Refer to Figure 12

4. Use tarp strap to hold meter covers in place by fastening one end to the eye hook pulling it over the meter cover and hooking it to the box divider

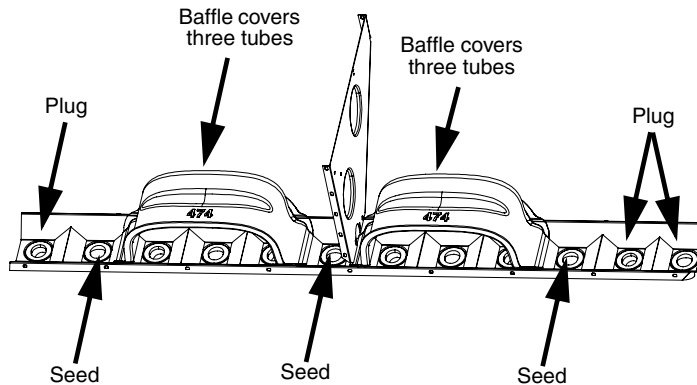


19252

Figure 12
Eye Hook to Box Divider

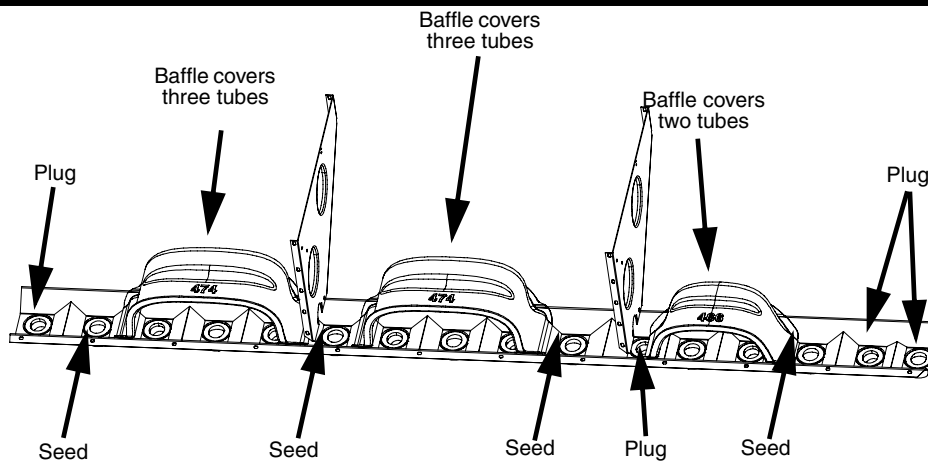
.NOTE: Refer to page 5 for illustration showing placement of seedtube corks and meter covers. Shut meters off that are not being used.

Seedtube Corks and Meter Covers

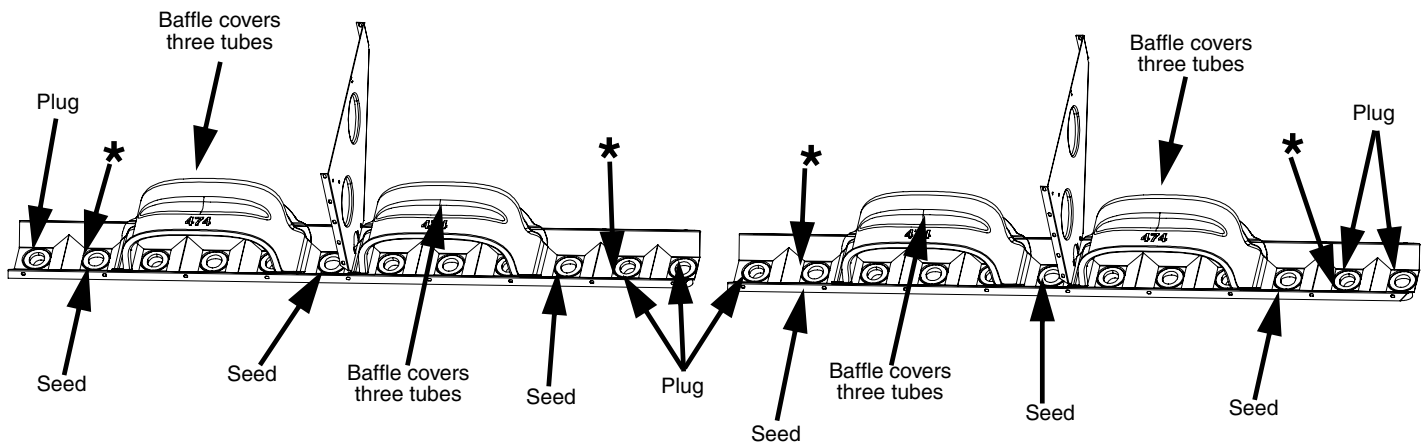


Note: These drawings refer to the installation of baffles and seedtube corks for the right hand side of the drill. Installation for the left hand side will be the same.

15' Rear of Drill



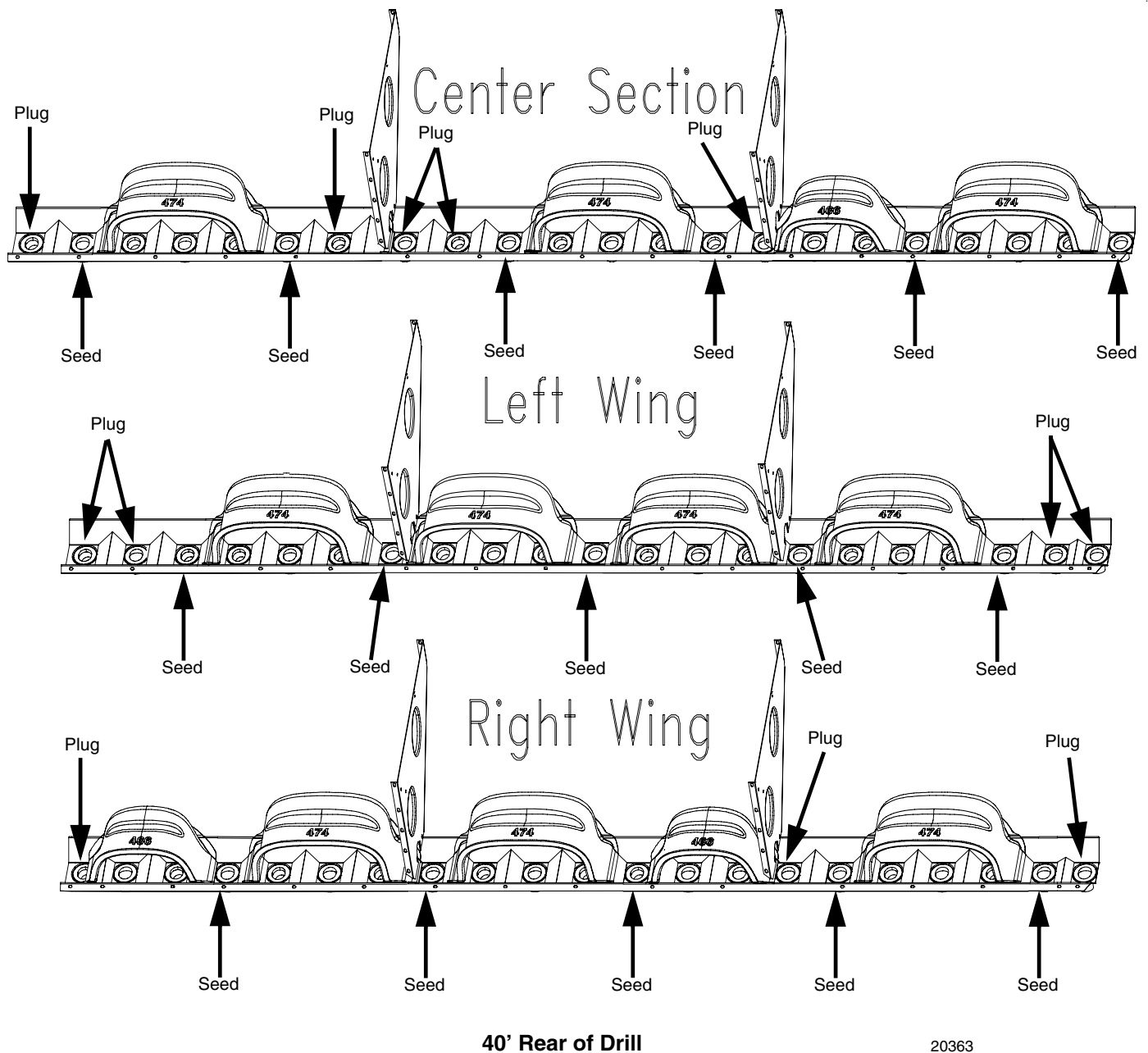
20' Rear of Drill



30' Rear of Drill

* Signifies eye bolt placement for 30' drills.

19890



20363

Note: Remove bolts in the ends of the drill boxes and use holes for eye bolt placement.

118-833A Baffle Package Option

Your kit includes:

Qty.	Part No.	Part Description
2	118-596D	INNER BOX END CLIP
2	118-597D	OUTER BOX END CLIP
1	118-829M	MANUAL 7 1/2 - 30IN BAFFLE
6	816-366C	SEEDTUBE CORK
4	816-369C	TARP STRAP 20 WITH HOOKS
4	817-474C	7 1/2 TO 30IN SPACING COVER
2	890-750C	FOAM SEAL 1/2 X 3/4 X 204

118-834A Baffle Package Option

Your kit includes:

Qty.	Part No.	Part Description
2	118-596D	INNER BOX END CLIP
2	118-597D	OUTER BOX END CLIP
1	118-829M	MANUAL 7 1/2 - 30IN BAFFLE
8	816-366C	SEEDTUBE CORK
6	816-369C	TARP STRAP 20 WITH HOOKS
2	817-466C	TWIN ROW METER COVER
4	817-474C	7 1/2 TO 30IN SPACING COVER
3	890-750C	FOAM SEAL 1/2 X 3/4 X 204

9 Baffle Package Option**118-835A Baffle Package Option**

Your kit includes:

Qty.	Part No.	Part Description
1	118-829M	MANUAL 7 1/2 - 30IN BAFFLE
8	802-233C	SP EYE 1/4-20X2 3/4
16	803-006C	NUT HEX 1/4-20 PLT
8	804-006C	WASHER LOCK SPRING 1/4 PLT
16	804-007C	WASHER FLAT 1/4 SAE PLT
12	816-366C	SEEDTUBE CORK
8	816-369C	TARP STRAP 20 WITH HOOKS
8	817-474C	7 1/2 TO 30IN SPACING COVER
4	890-750C	FOAM SEAL 1/2 X 3/4 X 204

118-856A Baffle Package Option

Your kit includes:

Qty.	Part No.	Part Description
1	118-829M	MANUAL 7 1/2 - 30IN BAFFLE
6	802-233C	SP EYE 1/4-20X2 3/4
12	803-006C	NUT HEX 1/4-20 PLT
6	804-006C	WASHER LOCK SPRING 1/4 PLT
12	804-007C	WASHER FLAT 1/4 SAE PLT
12	816-366C	SEEDTUBE CORK
9	816-369C	TARP STRAP 20 WITH HOOKS
3	817-466C	TWIN ROW METER COVER
10	817-474C	7 1/2 TO 30IN SPACING COVE
6	890-750C	FOAM SEAL 1/2 X 3/4 X 204

Great Plains Manufacturing, Inc.
Corporate Office: P.O. Box 5060
Salina, Kansas 67402-5060 USA