
Owner's / Parts Manual

24' & 30' 2-Section No-Till Small Seeds Attachment

Great Plains

Manufacturing, Inc.

P.O. Box 218
Assaria, Kansas 67416



Your Great Plains 2-Section No-Till Drill Small Seeds Attachment is designed to give you many years of dependable service. This manual has been prepared to instruct you in the safe and efficient operation of this machine. Read and study it thoroughly. Follow all instructions and service procedures carefully.

The parts on your 2-Section No-Till Drill Small Seeds Attachment have been specially designed and should only be replaced with genuine Great Plains parts. Therefore; should your drill require replacements parts, purchase them from your Great Plains Dealer.

Space has been provided below for you to record your model number and serial number of your drill. Be sure to bring this information with you to your dealer when ordering parts or attachments for your drill.

The following signal symbol and words should be clearly understood! When seen in this manual or on your equipment, this symbol and words will alert you to the seriousness of a situation. They should not be ignored or taken lightly.



The **SAFETY ALERT SYMBOL** indicates that there is a potential hazard to personal safety involved and extra safety precautions must be taken. When you see this symbol, be alert and carefully read the message that follows it. In addition to design and configuration of equipment; hazard control and accident prevention are dependent upon the awareness, concern, prudence and proper training of personnel involved in the operation, transport, maintenance and storage of equipment.

DANGER: Indicates an imminently hazardous situation which, if not avoided, will result in death or serious injury. This signal word is limited to the most extreme situations.

WARNING: Indicates a potentially hazardous situation which, if not avoided, could result in death or serious injury.

CAUTION: Indicates a potentially hazardous situation which, if not avoided, may result in minor or moderate injury. It may also be used to alert against unsafe practices.

SERIAL NUMBER _____

MODEL NUMBER _____

DATE PURCHASED _____

TABLE OF CONTENTS

Introduction-----	1-0
Table Of Contents -----	1-1
Installation Instructions-----	1-2
30' Option Kit Part Numbers-----	1-2
24' Option Kit Part Numbers-----	1-2
Nut And Bolt Torquing Chart-----	1-2
Location of Small Seeds Boxes-----	1-3
Mounting Holes Drilling Installation -----	1-4
Small Seeds Box Mounting And Coupler-----	1-5
Jackshaft Drive Assembly Installation -----	1-6
Front Jackshaft Drive Assembly -----	1-7
Drive Chain Routing -----	1-8
Seed Cup Covers-----	1-8
Small Seeds Y-tube Mount-----	1-9
Small Seeds Press Wheel Mount -----	1-9
Seeding Adjustments-----	1-10
Seed Rate Chart-----	1-11
Warranty -----	1-12

PARTS BOOK

Small Seeds Box Assembly -----	1-13
Small Seeds Box Mounting & Coupler Assembly -----	1-15
Jackshaft Drive Assembly-----	1-17
Front Jackshaft Assembly-----	1-19
"Y" Tube And Press Wheel Mounting -----	1-21
Decal Placement-----	1-23

The Great Plains Small Seeds Attachment option is made available to fit any Great Plains 2-Section No-Till Drill. This option can be ordered on a new drill and installed at the factory or can be installed in the field by the dealer or customer.

Before installing the Small Seeds Attachment on your Great Plains Drill, check the option kit part number. The correct kit for your drill is listed in Fig. 1 for 30' drills or Fig. 2 for 24' drills. Torque all bolts according to Fig. 3 unless told otherwise.

30' SMALL SEED ATTACHMENT OPTION KIT PART NUMBERS

OPTIONS	ROW SPACING		
	7 1/2"	8"	10"
Press Wheel Hose Mount	123-742A	123-738A	123-743A
Y-Tube Mount	123-746A	123-739A	123-747A

Fig. 1

24' SMALL SEED ATTACHMENT OPTION KIT PART NUMBERS

OPTIONS	ROW SPACING		
	7 1/2"	8"	10"
Press Wheel Hose Mount	123-740A	123-736A	123-741A
Y-Tube Mount	123-744A	123-737A	123-745A

Fig. 2

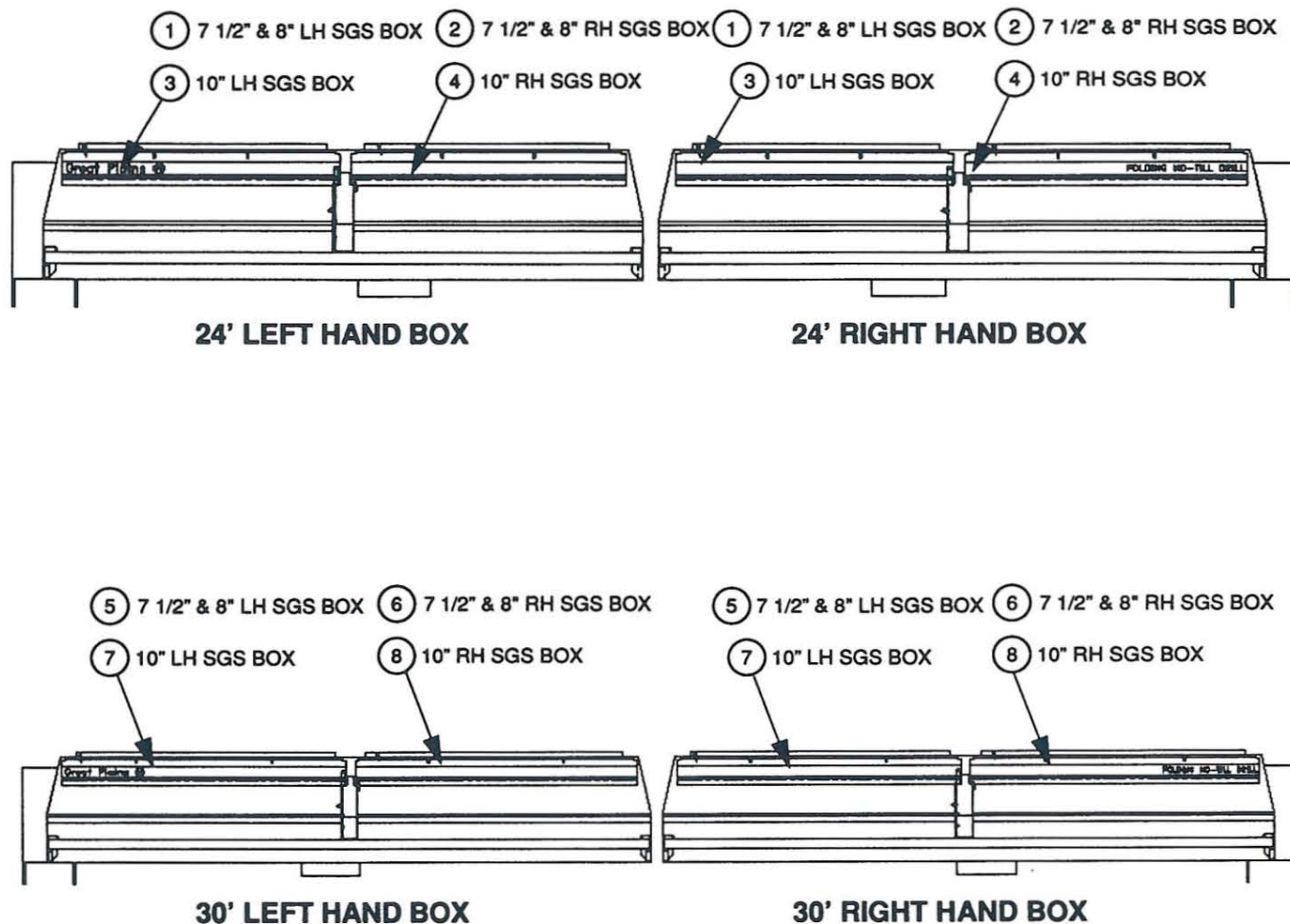
NUT & BOLT TORQUING CHART

This chart is based on torque requirements in foot pounds for grade 5 bolts.

BOLT DIAMETER	MINIMUM TORQUE	MAXIMUM TORQUE	BOLT DIAMETER	MINIMUM TORQUE	MAXIMUM TORQUE
1/4"	9	11	3/4"	270	324
5/16"	17	20	7/8"	400	480
3/8"	35	42	1"	580	696
7/16"	54	64	1 1/8"	800	880
1/2"	80	96	1 1/4"	1120	1240
9/16"	110	132	1 3/8"	1460	1680
5/8"	150	180	1 1/2"	1940	2200

NOTE: Torque requirements listed above do not apply to self-locking nuts. For self-locking nuts increase the torque requirements listed above by 15%.

Fig. 3

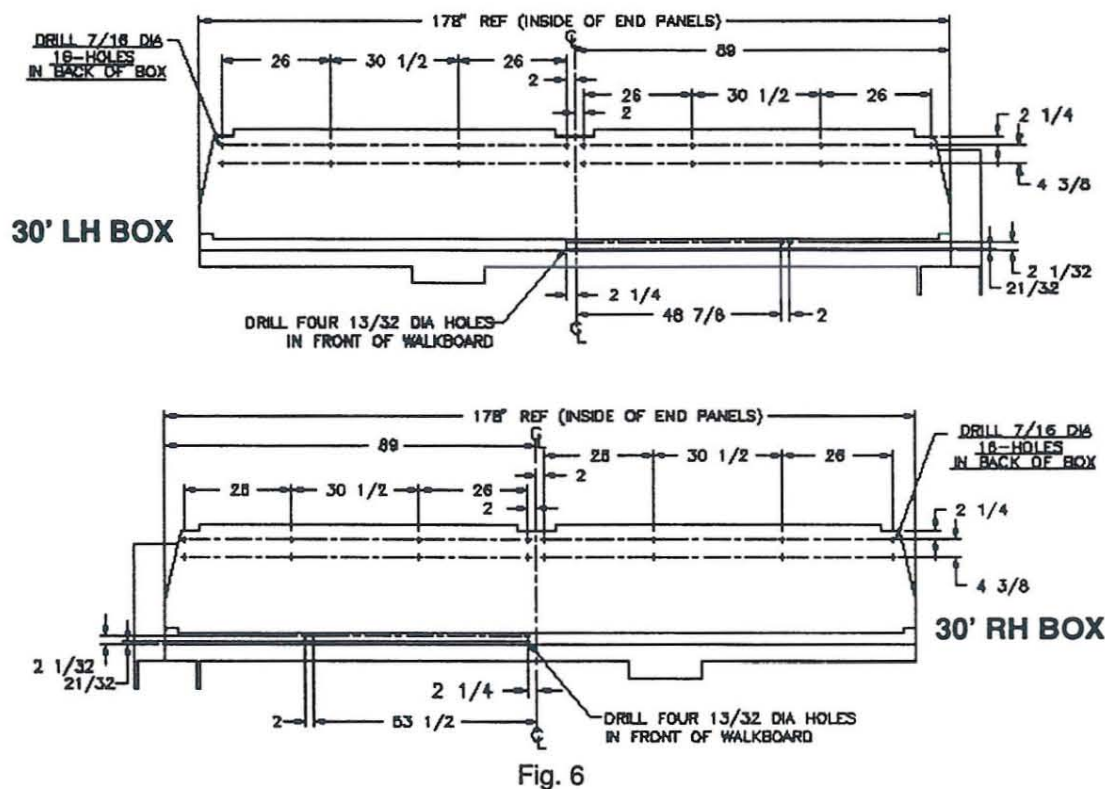
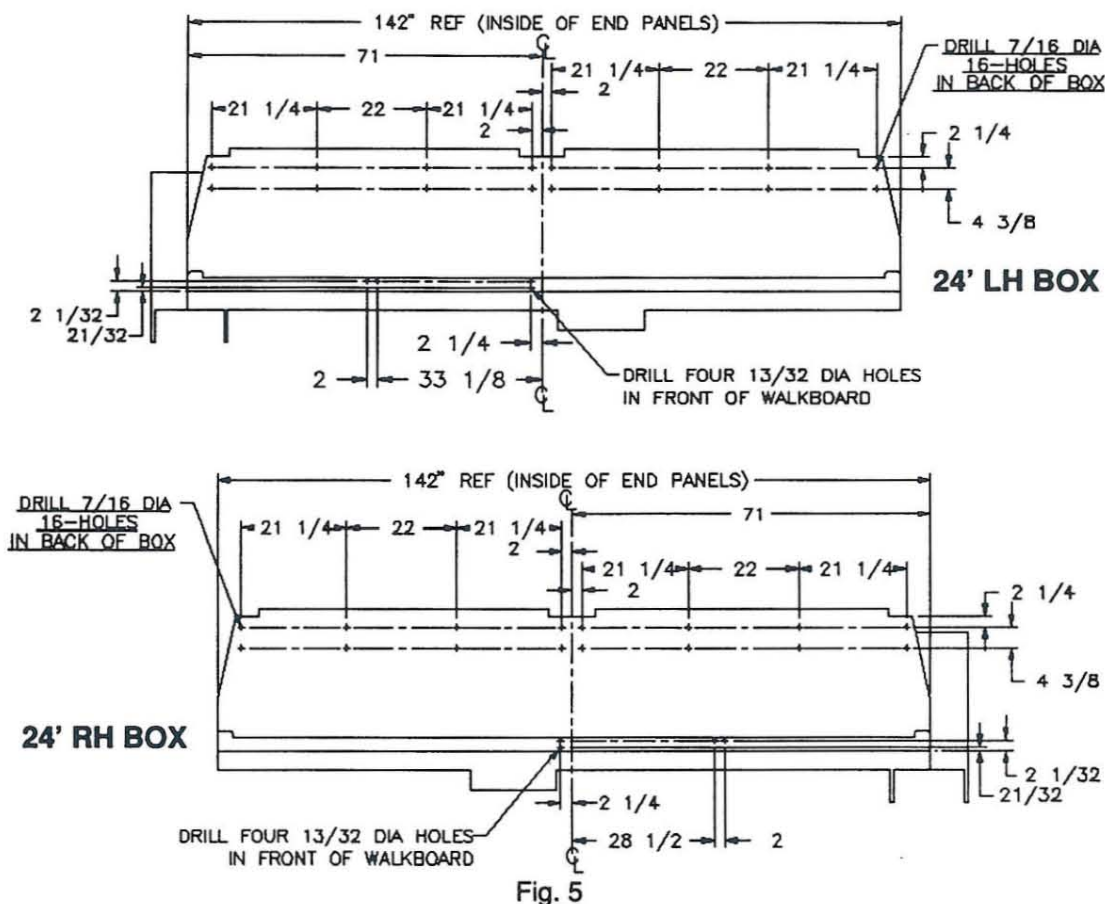
LOCATION OF SMALL SEEDS BOXES

GREAT PLAINS PART NO.	2-SECTION NO-TILL DRILL DESCRIPTION		
	SIZE	SPACING	BOX ASSEMBLY
1. 123-477L	24'	7 1/2" & 8"	Left Hand
2. 123-478L	24'	7 1/2" & 8"	Right Hand
3. 123-479L	24'	10"	Left Hand
4. 123-480L	24'	10"	Right Hand
5. 123-481L	30'	7 1/2" & 8"	Left Hand
6. 123-482L	30'	7 1/2" & 8"	Right Hand
7. 123-483L	30'	10"	Left Hand
8. 123-484L	30'	10"	Right Hand

Fig. 4

MOUNTING HOLE DRILLING LOCATIONS

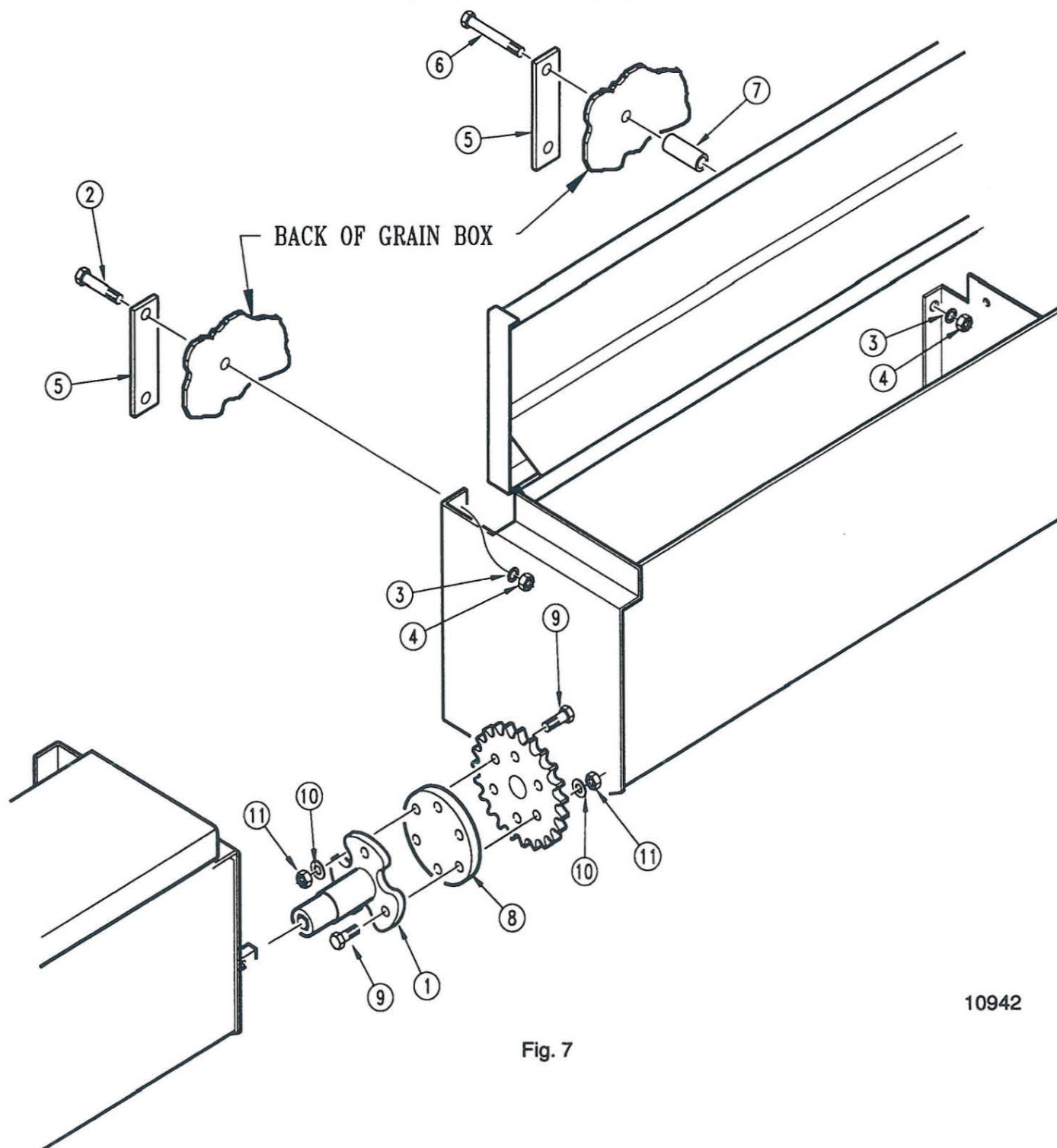
Layout and drill the 7/16" diameter mounting holes for mounting the small seeds box in the back of the grain boxes. Also, layout and drill the four 13/32" diameter holes in the front of the walkboard for the rear jackshaft mounting brackets. Use Fig. 5 for 24' drills and use Fig. 6 for 30' drills



SMALL SEEDS BOX MOUNTING & COUPLER ASSEMBLY

Refer to Fig. 7 for the following instructions. Slip the coupler connecting hub (#1) into the shaft of the small seeds box that doesn't have a sprocket. Bolt the side flanges of the small seeds boxes to the back of the grain boxes, using 5/16" x 1" long bolts (#2), lock washers (#3), and nuts (#4). Make sure to use the backing plate (#5) on the inside of the grain box. Bolt the center of the small seeds box to the grain box with 5/16" x 3 1/2" long bolts (#6), using the spacer tubes (#7) between the small seeds box and the grain box and putting a backing plate (#5) inside the grain box.

Insert the rubber coupler connecting plate (#8) between the sprocket and the coupler connecting hub (#1) and bolt it to the sprocket with three 1/4" x 1" long bolts (#9), flat washers (#10), and lock nuts (#11); and, to the coupler connecting hub with three more bolts (#9), flat washers (#10), and lock nuts (#11).



10942

Fig. 7

JACKSHAFT DRIVE ASSEMBLY

Refer to Fig. 8 for the following instructions. Fasten the rear drive bracket (#1) and the rear jack shaft bearing mount (#2) to the front of the walkboard with 3/8" x 3/4" long bolts (#3), flat washers (#4), lock washers (#5), and nuts (#6). Position the bracket square to the small seeds box, mark and drill two 13/32" holes through the holes in the top of the rear drive bracket into the small seeds box. Bolt the bracket to the box with two 3/8" x 3/4" long bolts (#3), lock washers (#5), and nuts (#6).

Assemble the rear jack shaft (#7), sprockets (#8 & #9), and bearings (#10) to the mounts as shown in Fig. 4. Be sure the blind key way end of the shaft is located toward the outside mounting bracket and the sprockets are on the correct ends of the shaft.

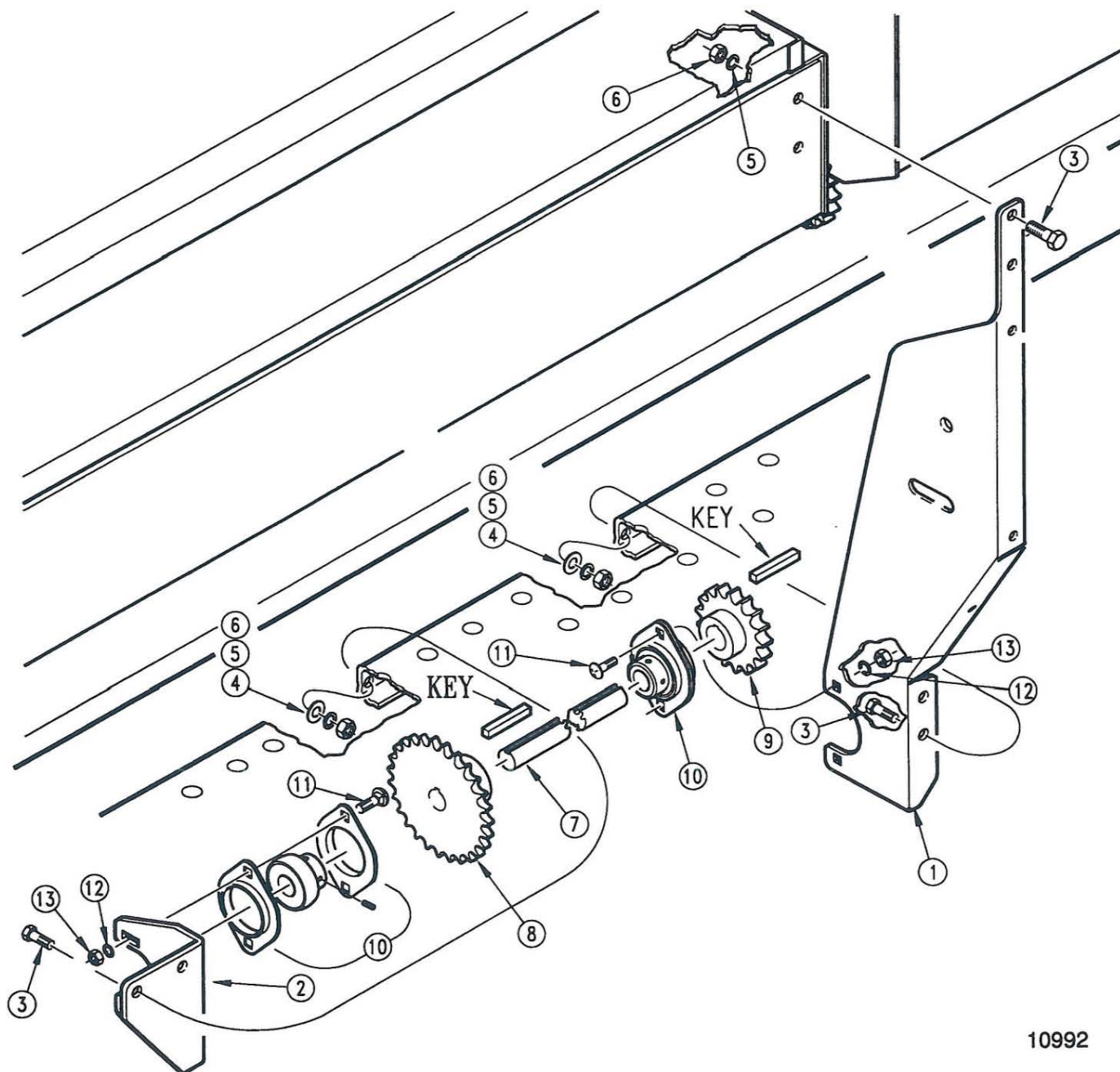
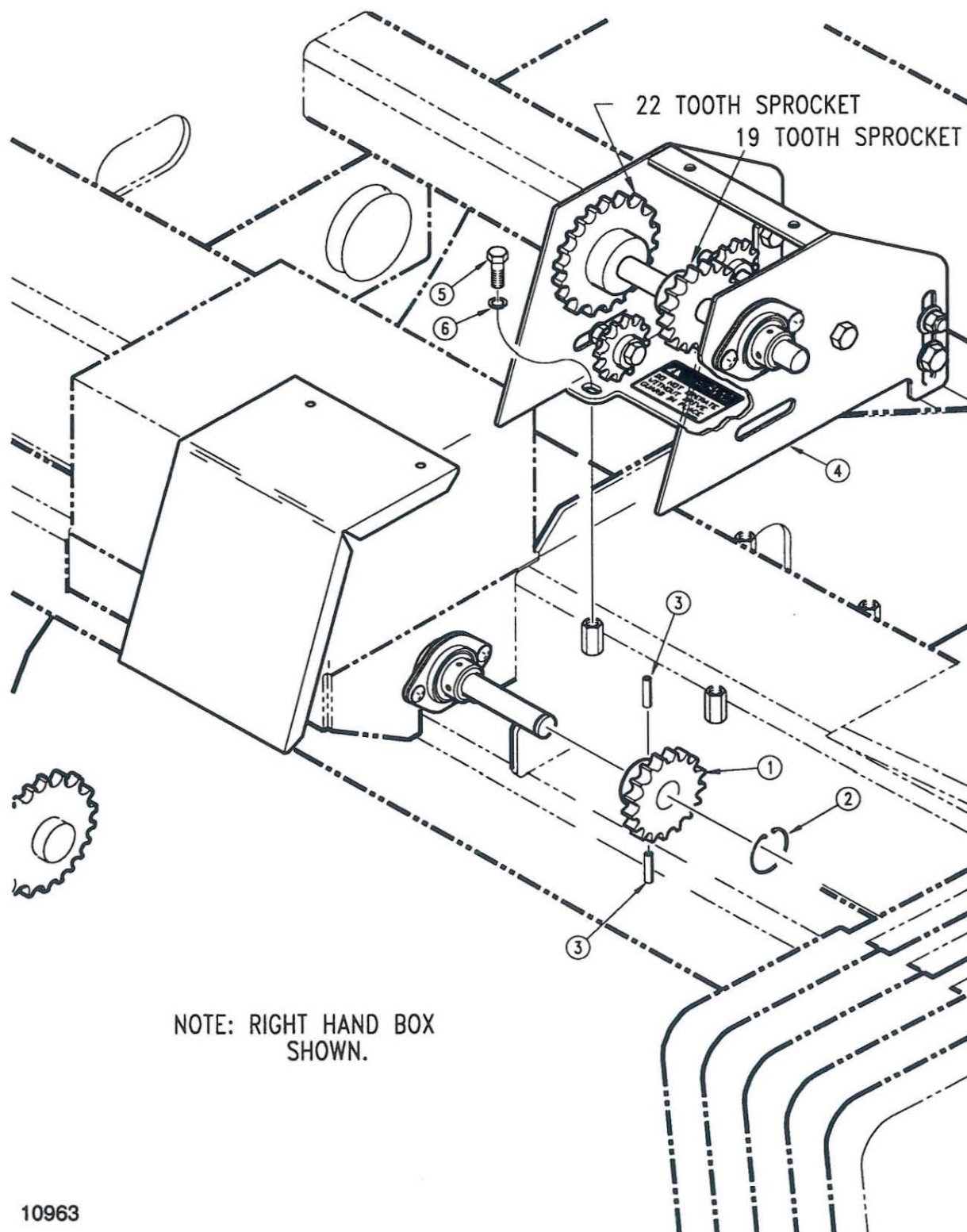


Fig. 8

FRONT JACKSHAFT MOUNTING INSTRUCTION

Refer to Fig. 9 for the following instructions. Assemble the 12 tooth sprocket (#1) into the gear box jackshaft with the 1" snap ring (#2) and the two 1/8" diameter roll pins (#3).

Bolt the front jackshaft mount (#4) to the 6" x 6" frame tube on the front of the grain box with four 3/8" x 1" bolts (#5) and lock washers (#6). {There are right hand and left hand assemblies. Note the sprocket arrangement for the correct drive ratios.}



10963

Fig. 9

DRIVE CHAIN ROUTING

Route and assemble the chains onto the sprockets as shown in Fig. 10 and tighten the idlers.

Bolt the front (#1) and rear drive guards (#2) in place with the u-clips (#3), 1/4" x 5/8" long bolts (#4) and lock washers (#5).

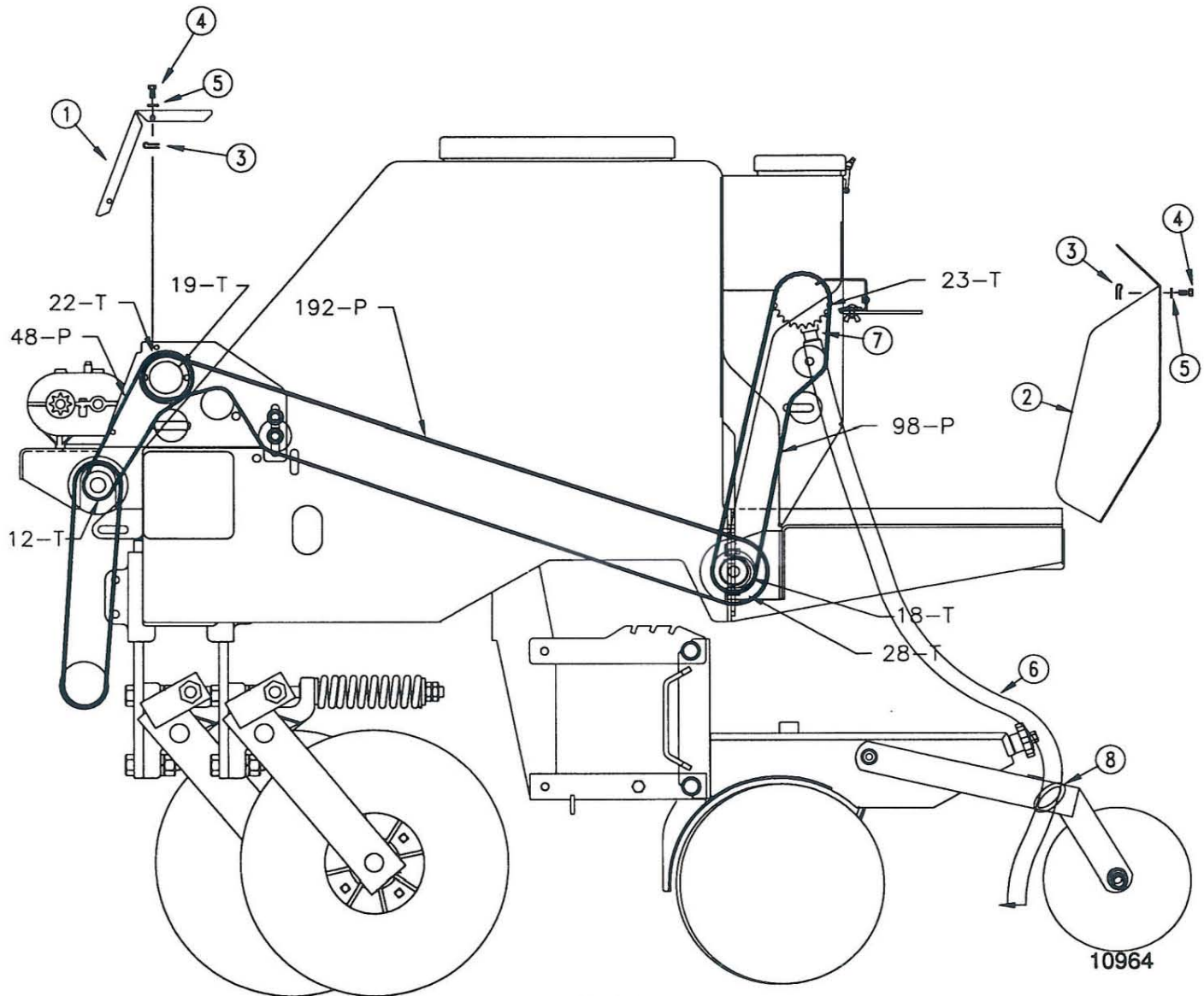
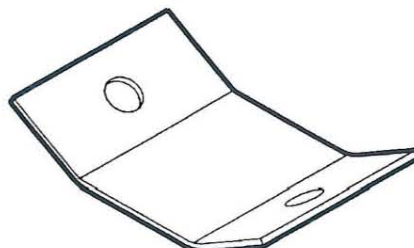


Fig. 10

SEED CUP COVERS

The same small seeds boxes are used for both the 7 1/2" and 8" spacings. If the 8" spacing is used a seed cup cover Fig. 11 (123-190D) will need to be installed to cover the unused openings (2 on the 24' drills and 4 on the 30' drills). Install them on the inside of the boxes and under the seed cup bolts.

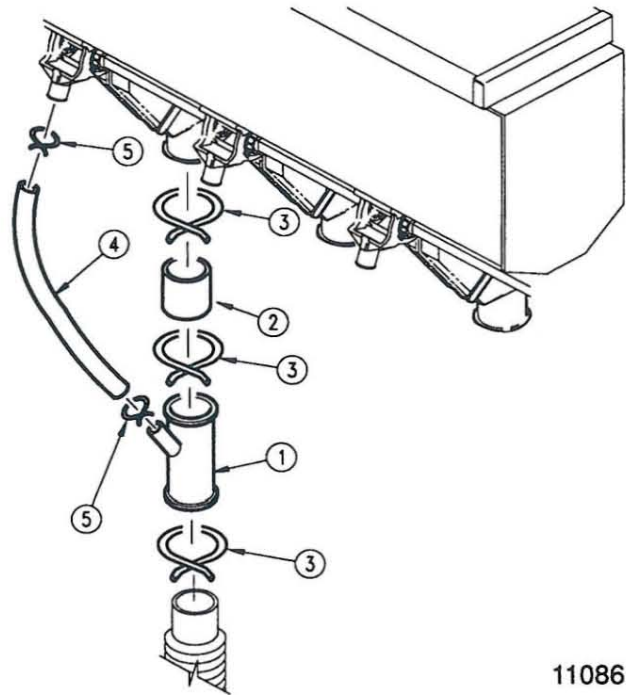
Seed Cup Cover
Fig. 11

SMALL SEEDS HOSE INSTALLATION

The small seeds hoses are assembled in one of the following ways:

"Y" TUBE MOUNT

Refer to Fig. 12 for "Y" tube mounting. The "Y" tube is assembled between the seed box feeder cup and the standard seed hose by means of the connector hose, (#2), and the three hose clamps, (#3). The small seeds hose, (#4), is then assembled between the small seeds feeder cup and the "Y" tube, (#1), and held in place with the small hose clamps, (#5).

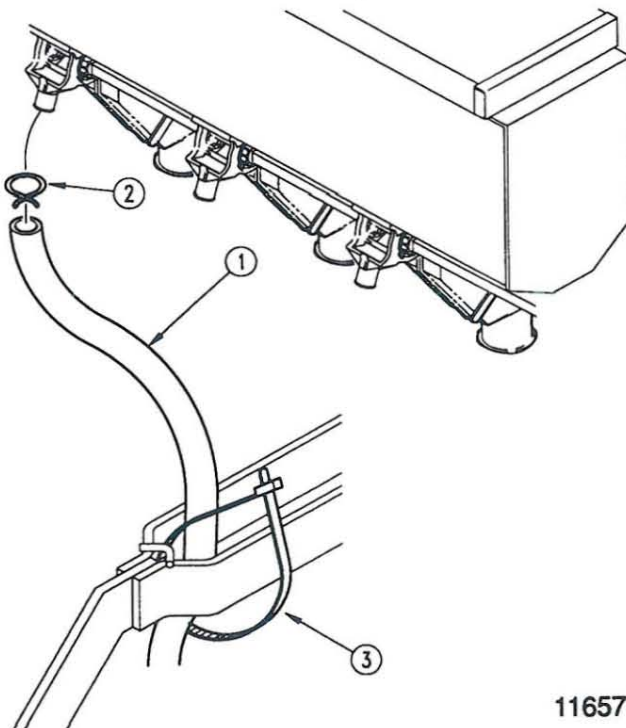


11086

"Y" Tube Mount
Fig. 12

PRESS WHEEL MOUNT

Refer to Fig. 13 for press wheel mounting. The small seeds hose, (#1), is assembled between the small seeds feeder cup and the Press wheel arm, and held in place with the small hose clamps, (#2), and the cable ties (#3).



11657

Press Wheel Mount
Fig. 13

NOTE: seeding rates will vary greatly with variations in sizes of the seeds. although the seeding rates listed in this manual are based on an average seed size, we recommend that you test and adjust your drill using the procedures listed below to help insure an accurate seeding rate.

1. Lower the drill hydraulically in order to activate the clutch. Raise the drive wheel off the ground with a jack. Rotate each end wheel to see that feed cups and drive are working properly, are not binding and are free from foreign matter.
2. The large differences in seed size and treatment can cause a wide variation in actual seeding rates. The seed rate charts on the following pages are based on average size seed. This may differ from the seed you are using. Use the seed rate charts as a guide.

Read the feed cup adjustment indicator number for the desired feeding rate (and row spacing) from the following seed rate charts. Complete the following procedure to calibrate the drill for your specific seed.

- A. Move the feed cup adjustment lever to the indicator number obtained from the chart. (Step 2 above)
 - B. Place several pounds of seed over three of the feeder cups at the outboard end of the small seeds box.
 - C. Pull the seed tubes off of these three disk openers.
 - D. Place a container under the three seed tubes to gather the seed as it is metered.
 - E. Rotate the drive gauge wheel until one acre has been tallied on the acremeter. This will be approximately 168.5 rotations for 30' drill and 213 rotations for 24' drill. Be sure to check the three feeder cups to make sure each cup has plenty of seed coming into it.
 - F. Weigh the seed which has been metered. Divide by three. This will give you the ounces/pounds metered by each feeder cup. Multiply by the number of openers on your drill to arrive at the total pounds-per-acre your drill would meter at that setting. If this figure is different than desired, reset your feed cup adjustment lever accordingly.
 - G. Repeat procedures A through F for each drill box.
3. You may want to repeat the calibration procedure if the results of your calibration vary greatly from the suggested setting contained in this manual.
 4. There are many factors which will affect seeding rates: seed treatment, weight of seed, size of seed, surface condition of seed, tire configuration, pressure and slippage. Minor adjustments will probably needed to compensate for these factors.
 5. The seeding rates in the seed charts are based on drills having 10.0 x 15SL rib implement end wheel tires.

REMEMBER: Tire size and field conditions will also affect seeding rates. Be certain that your drill rib tires are 10.0 x 15SL and that they have the proper inflation. When drilling, check the amount of seed you are using by noting acres drilled, amount of seed added to drill, and level of seed in drill box. If you suspect that you are drilling more or less than desired, and you have accurately calibrated the drill to your seed, you may need to adjust the seeding rate slightly to compensate for your field conditions.

SEED VARIETY	ROW SPACING	SEED RATE INDICATOR SETTING NUMBER (Pounds Per Acre)									
		10	20	30	40	50	60	70	80	90	100
Alfalfa; Red, Alsike & Ladino Clovers	7 1/2"	3	6	10	15.5	19	23	29	33.5	39	43
	8"	2.5	5.5	9	14	17.5	21	26	31	36	39.5
	10"	2.25	5	7.5	12	14.5	17	21.5	25	29	32
Lespedeza Hulled, Serotia, Crimson, Clover; Birdsfoot Trefoil	7 1/2"	2.5	5.5	8.5	16.5	20.5	25.5	32	36.5	45.5	50.5
	8"	2.25	5	8	15	19	23	29.5	33.5	41.5	46.5
	10"	2	4	6.5	12.5	15.5	19	24	27.5	34	38
Lespedeza Unhulled	7 1/2"	1.75	3.5	5.5	9.5	12	14.5	16.5	19	21.5	24
	8"	1.5	3	5	8.5	11	13	15	17.5	19.5	22
	10"	1.25	2.5	4	7	9	10.5	12.5	14.5	16	18
Timothy; Red Top; Sand & Love Grass	7 1/2"	1.75	3.5	5	7.5	9.5	11.5	14	16	18.5	20.5
	8"	1.5	3	4.5	6.5	8.5	10.5	12.5	14.5	17	19
	10"	1.25	2.5	3.5	5.5	7	8.5	10.5	12	14	15.5
Kentucky Bluegrass; Fescue	7 1/2"	--	1.5	2.25	3.5	4.25	5	6	7	8	8.5
	8"	--	1.25	2	3	4	4.5	5.5	6.5	7	8
	10"	--	1	1.5	2.5	3	3.5	4.5	5	6	6.5
Reed Canary	7 1/2"	1	2.25	3.5	5	6.5	8	9.5	10.5	12	13
	8"	--	2	3	4.5	5.5	7	8.5	10	11	12
	10"	--	1.75	2.5	3.5	4.5	6	7	8	9	10
German Millet	7 1/2"	2.25	4.5	8.5	13	16.5	19.5	24	28.5	33	37
	8"	2	4	7.5	12	15	18	22	26	30.5	34
	10"	1.75	3.5	6	10	12	14.5	18	21	25	28
Sudan Grass	7 1/2"	2.25	4.5	8.5	13	16.5	18	25	29.5	34.5	38.5
	8"	2	4	7.5	12	15	19	23	27	32	35.5
	10"	1.75	3.5	6	10	12	15.5	19	22	26	29

WARRANTY

Great Plains Manufacturing, Incorporated warrants to the original purchaser that this seeding equipment will be free from defects in material and workmanship for a period of one year from the date of original purchase when used as intended and under normal service and conditions for personal use; 90 days for commercial or rental purposes. This Warranty is limited to the replacement of any defective part by Great Plains Manufacturing, Incorporated and the installation by the dealer of any such replacement part. Great Plains reserves the right to inspect any equipment or part which are claimed to have been defective in material or workmanship.

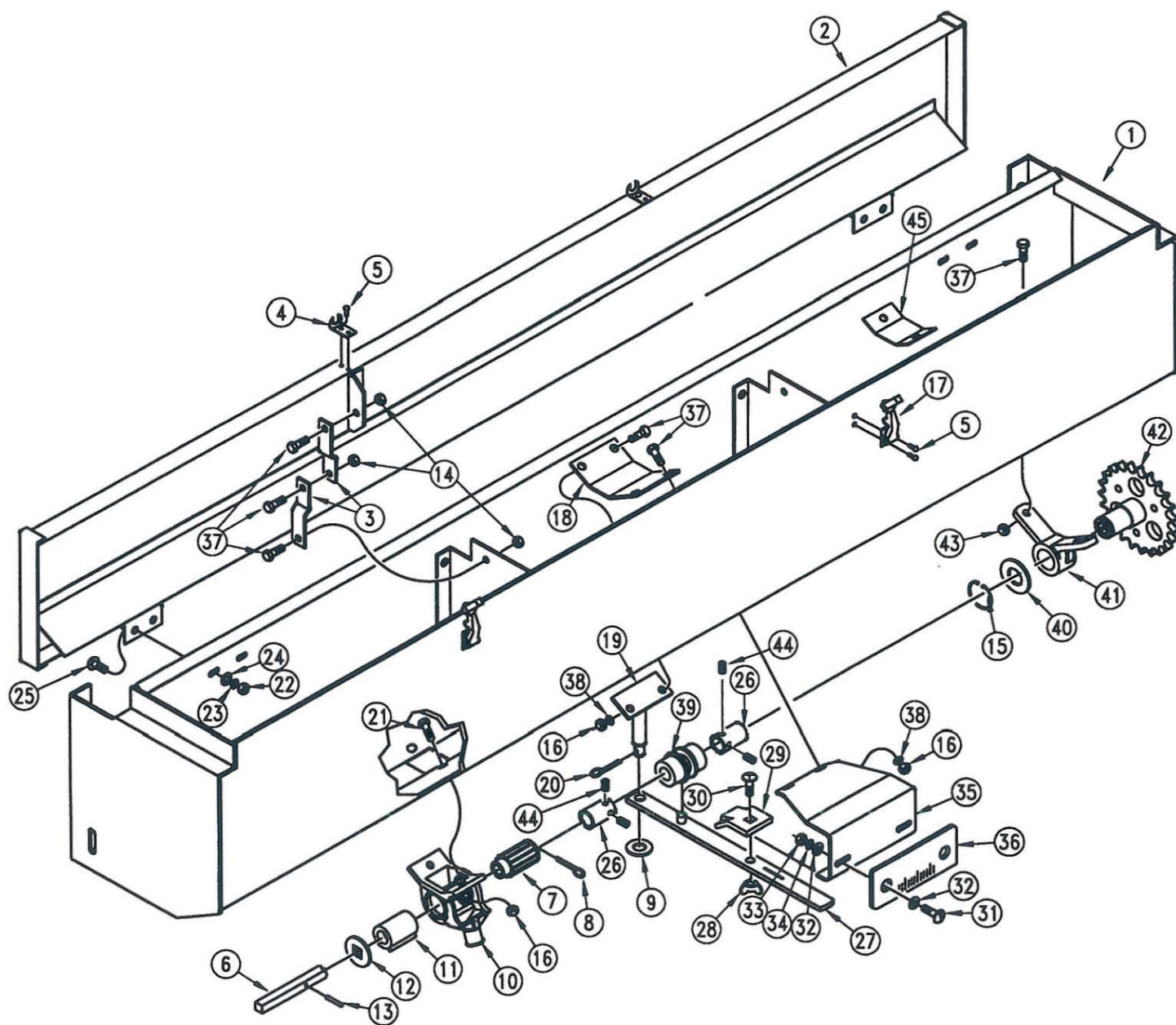
This Warranty does not apply to any part or product which in Great Plains' judgement shall have been misused or damaged by accident or lack of normal maintenance or care, or which has been repaired or altered in a way which adversely affects its performance or reliability, or which has been used for a purpose for which the product is not designed. This Warranty shall not apply if the product is towed at a speed in excess of 20 miles per hour.

Claims under this Warranty must be made to the dealer which originally sold the product and all warranty adjustments must be made through such dealer. Great Plains reserves the right to make changes in materials or design of the product at any time without notice.

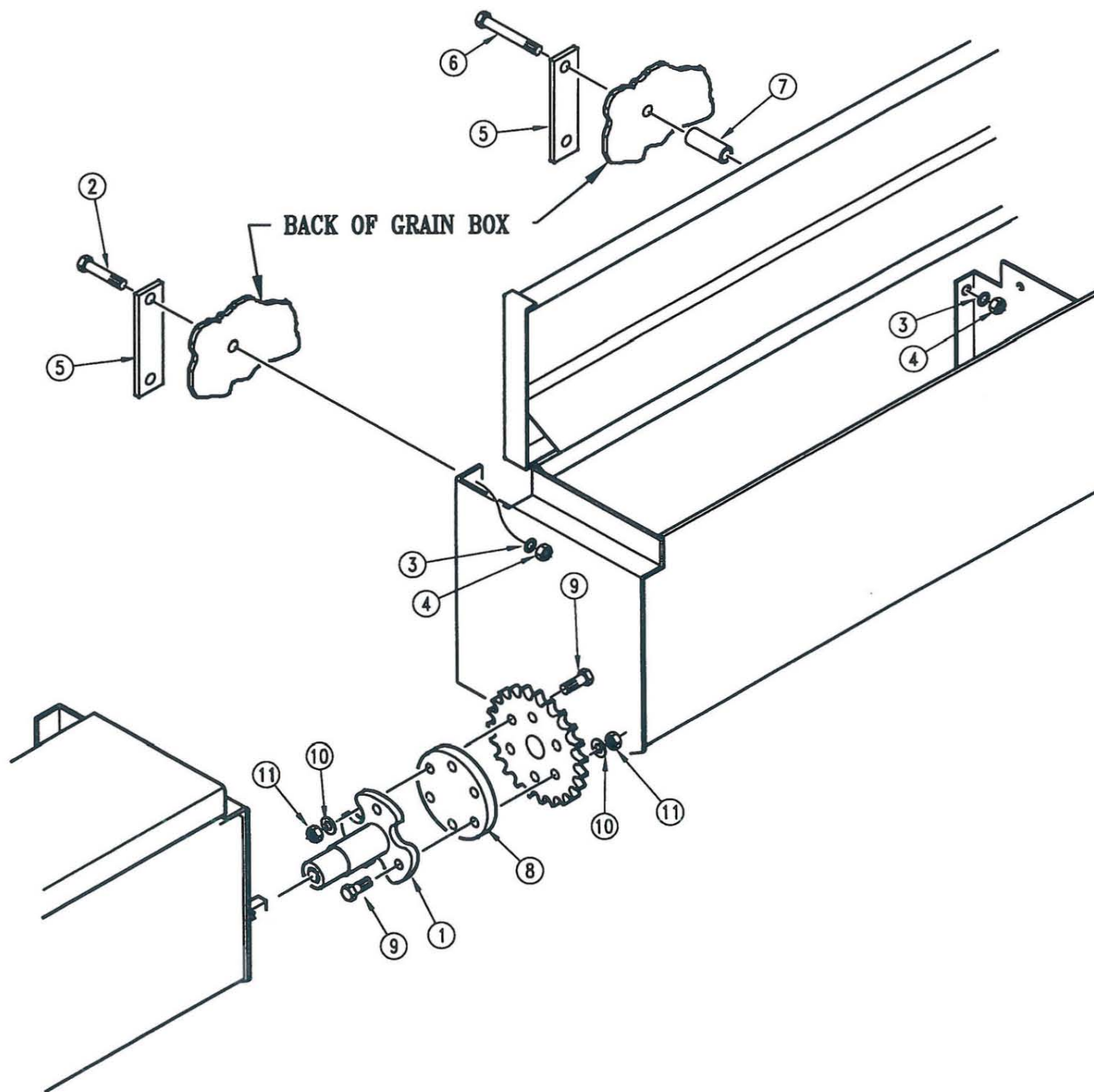
This Warranty shall not be interpreted to render Great Plains liable for damages of any kind, direct, consequential, or contingent, to property. Furthermore, Great Plains shall not be liable for damages resulting from any cause beyond its reasonable control. This Warranty does not extend to loss of crops, losses caused by harvest delays or any expense or loss for labor, supplies, rental machinery or for any other reason.

No other warranty of any kind whatsoever, express or implied, is made with respect to this sale; and all implied warranties of merchantability and fitness for a particular purpose which exceed the obligations set forth in this written warranty are hereby disclaimed and excluded from this sale.

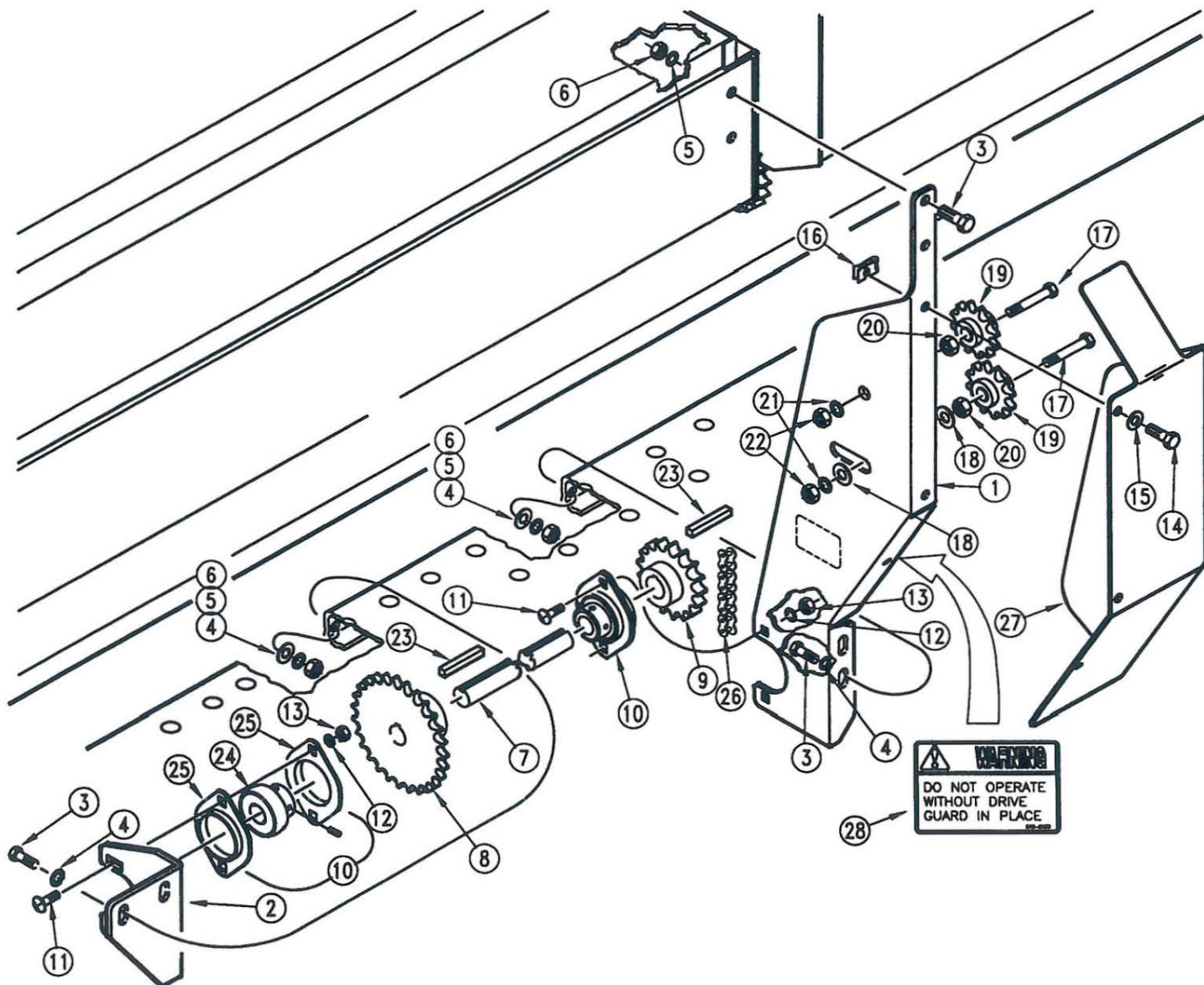
This Warranty is not valid unless registered with Great Plains Manufacturing, Incorporated with 10 days from the date of original purchase.



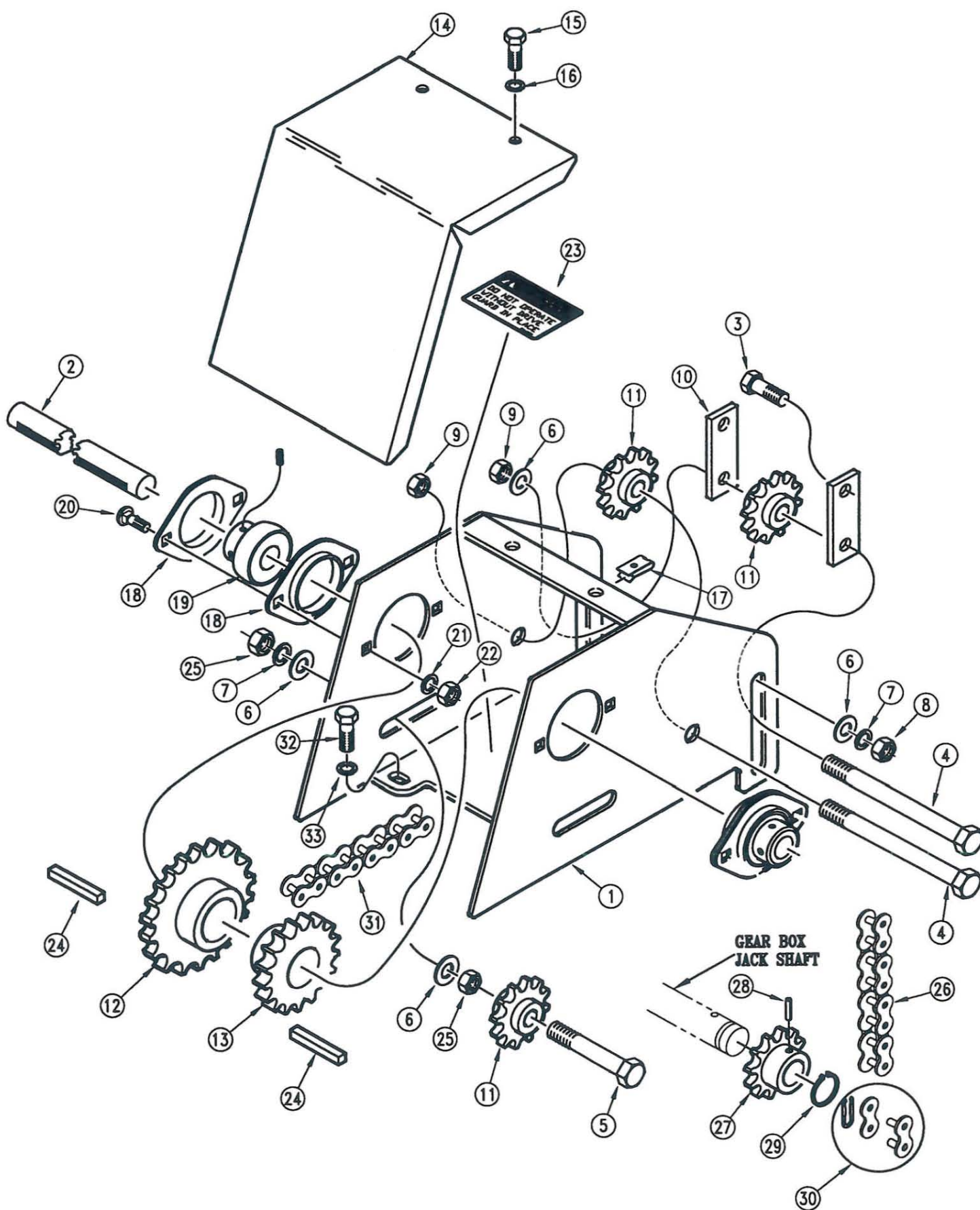
Ref.	Part No.	Description
1.	123-468H	Small Seeds Box 24' - 7 1/2" & 8" Left Hand
	123-469H	Small Seeds Box 24' - 7 1/2" & 8" Right Hand
	123-470H	Small Seeds Box 24' - 10"
	123-466H	Small Seeds Box 30' - 7 1/2" & 8"
	123-467H	Small Seeds Box 30' - 10"
2.	123-472H	Small Seeds Lid - 24'
	123-471H	Small Seeds Lid - 30'
3.	123-356D	Lid Latch
4.	816-113C	Latch Keeper
5.	800-101C	Rivet 1/8" x 0.265 Long
6.	123-399D	Small Seeds Cup Shaft 24' - 7 1/2" & 8" Outside
	123-400D	Small Seeds Cup Shaft 24' - 7 1/2" & 8" Inside
	123-401D	Small Seeds Cup Shaft 24' - 10"
	123-402D	Small Seeds Cup Shaft 30' - 7 1/2" & 8"
	123-402D	Small Seeds Cup Shaft 30' - 10"
7.	817-010C	Grass Seeder Sprocket
8.	805-067C	Pin, Cotter 1/8" x 3/4" Long
9.	804-012C	Washer, Flat 3/8" SAE
10.	817-008C	Grass Seeder Cup
11.	817-009C	Grass Seeder Sleeve
12.	804-042C	Washer, Small Seeds Cup Shaft
13.	805-057C	Pin, Roll 1/8" x 3/4" Long
14.	803-007C	Nut, Lock 1/4"-20
15.	800-028C	Ring, Snap 7/8"
16.	803-006C	Nut, Hex 1/4"-20 Gr 2
17.	816-112C	Rubber Latch
18.	123-118D	Seed Adjustment Support
19.	123-050H	Adjustment Handle Pivot
20.	805-019C	Pin, Cotter 5/32" x 1" Long
21.	802-148C	Bolt, Whiz Head 1/4"-20 x 1/2" Long
22.	803-001C	Nut, Hex #10-24
23.	804-004C	Washer, Internal Star #10
24.	804-046C	Washer, Flat #10
25.	801-003C	Screw, Round Head #10-24 x 1/2" Long
26.	123-436D	Seed Cup Shaft Locking Collar
27.	123-476H	Rear Seed Rate Adjustment Handle
28.	803-058C	Nut, Wing 5/16"-18
29.	123-113D	Lock Tab
30.	802-092C	Bolt, Carriage 5/16"-18 x 3/4" Long
31.	801-001C	Screw, Round Head #8-32 x 3/8" Long Brass
32.	804-003C	Washer, Flat #8 Brass
33.	803-035C	Nut, Hex #8-32 Brass
34.	804-002C	Washer, Internal Star #8 Brass
35.	123-410D	Gauge Mount Bracket
36.	819-041C	Feed Adjustment Gauge
37.	802-078C	Bolt, Hex Head 1/4"-20 x 5/8" Long
38.	804-006C	Washer, Lock Spring 1/4"
39.	123-116D	Seed Adjustment Spool
40.	804-044C	Washer, Flat 1 3/8" x 0.876 x 0.048
41.	817-026C	Drive Sprocket Hanger Bearing
42.	123-473H	Coupler Drive Sprocket
43.	803-088C	Nut, Hex Lock Flanged 1/4"-20
44.	801-035C	Screw, Set Socket Knurled Point 5/16"-18 x 3/8" Long
45.	123-190D	Seed Cup Cover (For Plugging Extra Holes On 8" Row Spacing)



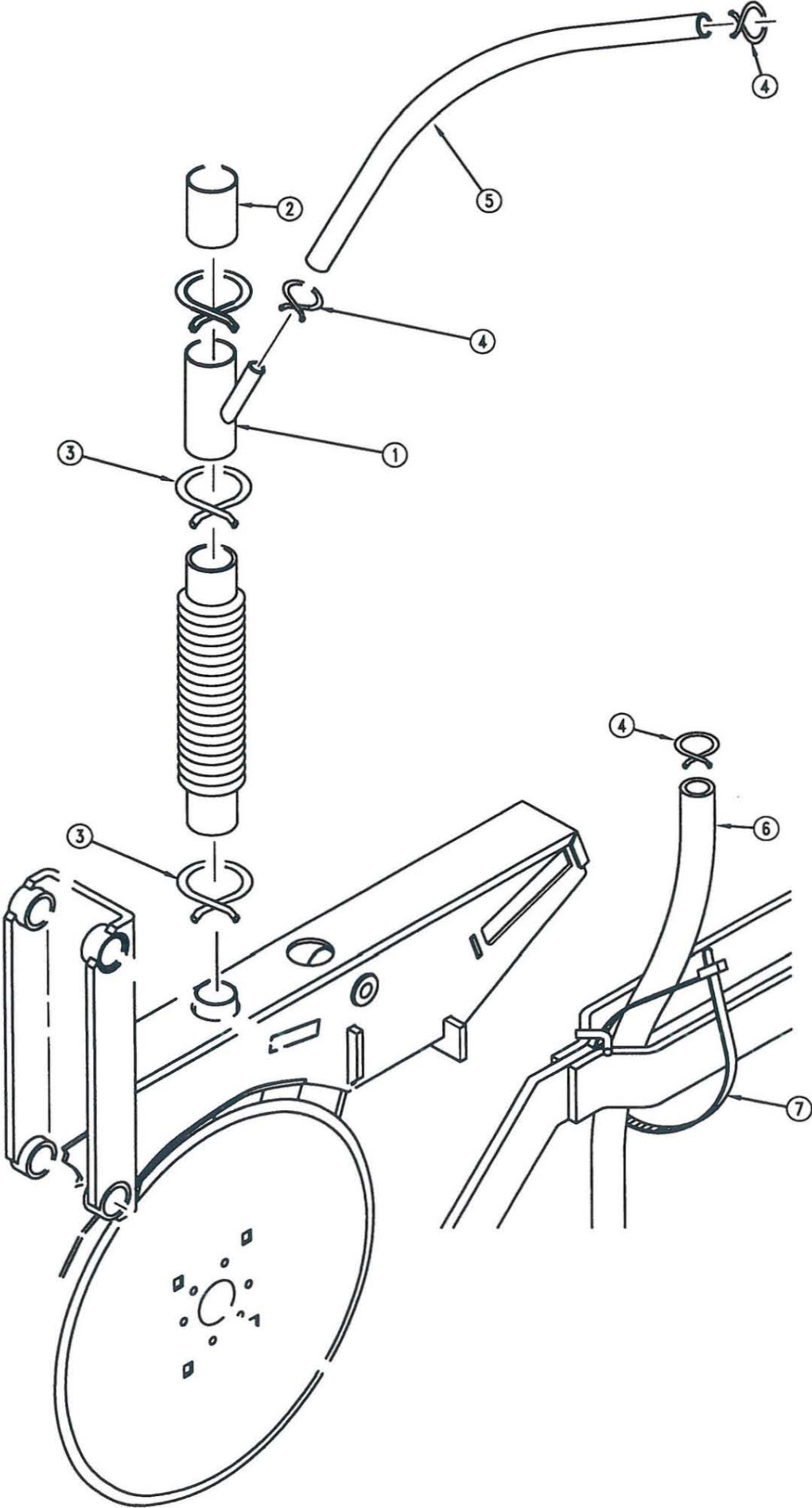
Ref.	Part No.	Description
1.	123-474H	Coupler Connection Hub
2.	802-159C	Bolt, Hex Head 5/16"-18 x 1" Long
3.	804-009C	Washer, Lock Spring 5/16"
4.	803-008C	Nut, Hex 5/16"-18 Gr 2
5.	123-359D	Small Seeds Mount Backing Plate
6.	802-190C	Bolt, Hex Full Threaded 5/16"-18 x 3 1/2" Long
7.	123-358D	Small Seeds Spacer Tube 10'
8.	816-119C	Coupler Cushion Plate
9.	802-005C	Bolt, Hex Head 1/4"-20 x 1" Long
10.	804-007C	Washer, Flat 1/4" SAE
11.	803-003C	Nut, Lock Nylock Spring Steel Dimpled 1/4"-20



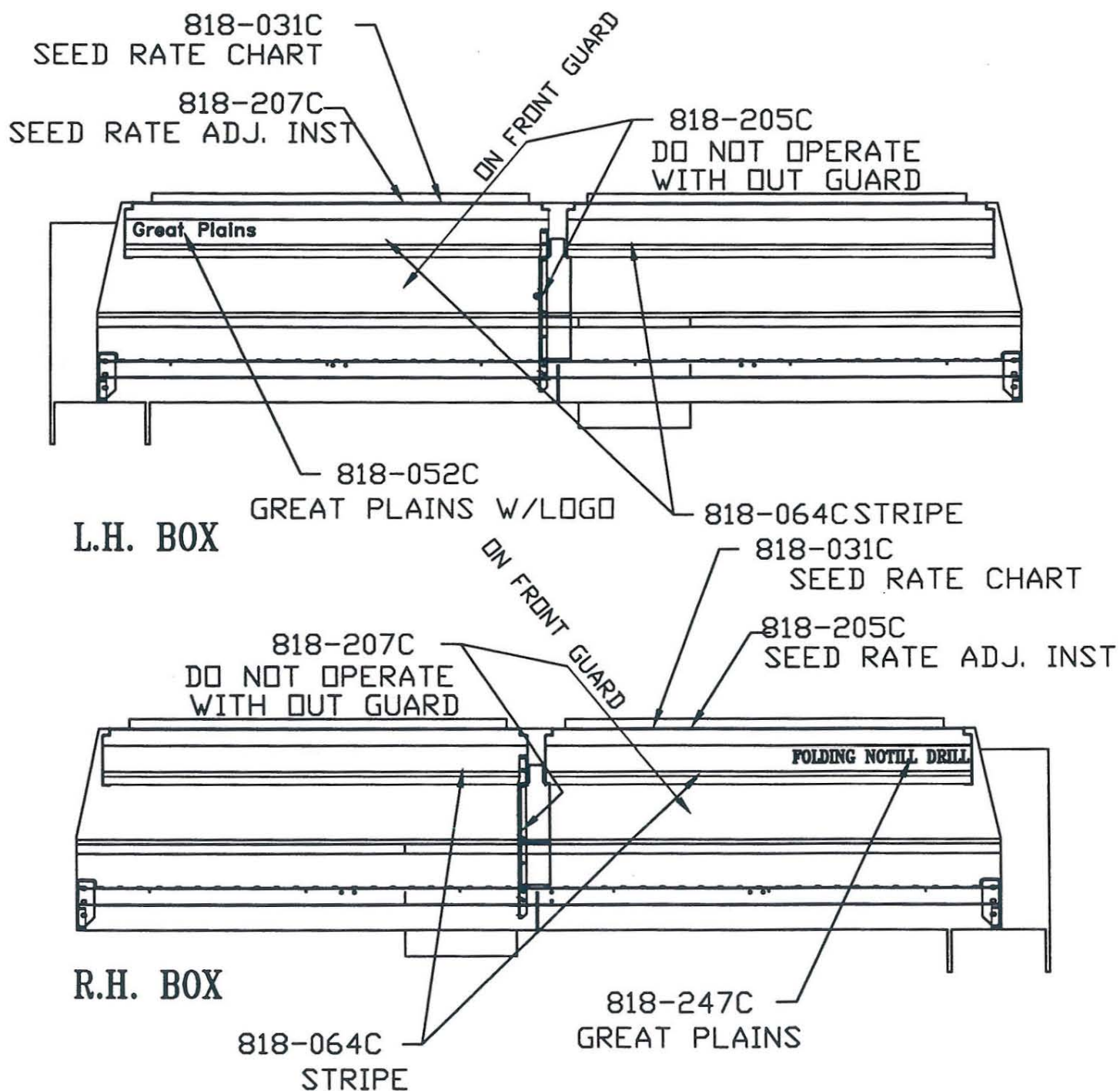
Ref.	Part No.	Description
1.	123-380D	Rear Drive Bracket
2.	123-385D	Rear Bearing Bracket
3.	802-014C	Bolt, Hex Head 3/8"-16 x 3/4" Long
4.	804-012C	Washer, Flat 3/8" SAE
5.	804-013C	Washer, Lock Spring 3/8"
6.	803-014C	Nut, Hex 3/8"-16 Gr 2
7.	123-388D	Rear Jackshaft - 24'
	123-389D	Rear Jackshaft - 30'
8.	808-072C	Sprocket 40B28 x 3/4" Bore With Key Way & Set Screw
9.	808-118C	Sprocket 40B18 x 3/4" Bore With Key Way & 2 Set Screws
10.	123-475H	Rear Drive Guard
11.	802-092C	Bolt, Carriage 5/16"-18 x 3/4" Long
12.	804-009C	Washer, Lock Spring 5/16"
13.	803-008C	Nut, Hex 5/16"-18 Gr 2
14.	802-078C	Bolt, Hex Head 1/4"-20 x 5/8" Long
15.	804-006C	Washer, Lock Spring 1/4"
16.	800-013C	Fastener, U-Type 1/4"-20 x 1" Long
17.	802-039C	Bolt, Hex Head 1/2"-13 x 3" Long
18.	804-016C	Washer, Flat 1/2" SAE
19.	817-025C	Sprocket #40 Idler 12 Tooth
20.	803-036C	Nut, Hex Jam 1/2"-13
21.	804-015C	Washer, Lock Spring 1/2"
22.	803-020C	Nut, Hex 1/2"-13 Gr 2
23.	123-146D	Key 3/16" x 7/8" Long
24.	822-040C	Bearing Cup LM-67010
25.	822-041C	Flangette 47 MST
26.	809-106C	Chain, Roller #40 x 53 Pitches With Connector Link
27.	123-475H	Rear Drive Guard
28.	818-205C	Decal - Do Not Operate Without Drive Guard In Place



Ref.	Part No.	Description
1.	123-748H	Front Drive Bracket
2.	123-387K	Grass Seeder Bundle 12'-8" Shaft
3.	802-258C	Bolt, Hex 1/2"-13 x 1" Long
4.	802-289C	Bolt, Hex 1/2"-13 x 8" Long
5.	802-042C	Bolt, Hex 1/2"-13 x 3 3/4" Long
6.	804-016C	Washer, Flat 1/2" SAE
7.	804-015C	Washer, Lock Spring 1/2"
8.	803-020C	Nut, Hex 1/2"-13 Gr 2
9.	803-147C	Nut, Hex Nylock 1/2"-13
10.	123-428D	Idler Tab
11.	817-025C	Sprocket Idler #40-12 Tooth
12.	808-100C	Sprocket 40B22 Tooth With 3/4" Bore Key Way & Set Screw
13.	808-115C	Sprocket 40B19 Tooth With 3/4" Bore Key Way & Set Screw
14.	123-442D	Front Drive Guard
15.	802-078C	Bolt, Hex 1/4"-20 x 5/8" Long
16.	804-006C	Washer, Lock Spring 1/4"
17.	800-013C	Fastener, U-Type 1/4"-20 x 1" Long
18.	822-041C	Flangette 47 MST
19.	822-040C	Bearing 3/4" Bore
20.	802-092C	Bolt, Carriage 5/16"-18 x 3/4" Long
21.	804-009C	Washer, Lock 5/16"
22.	803-008C	Nut, Hex 5/16"-18
23.	818-205C	Decal - Do Not Operate Without Drive Guard In Place
24.	123-146D	Key 3/16" x 7/8" Long
25.	803-036C	Nut, Hex Jam 1/2"-13
26.	809-029C	Chain, Roller #40 x 48 Pitches With Connector Link
27.	808-117C	Sprocket #40 12 Tooth 1" Bore With Pin Hole
28.	805-080C	Pin, Roll 1/8" x 1" Long (2 Required Per Side)
29.	800-021C	Ring, Snap 1"
30.	809-070C	#40 Offset Chain Link
31.	809-134C	Chain, Roller #40 x 192 Pitches
32.	802-017C	Bolt, Hex Head 3/8" x 16 x 1" Long
33.	804-013C	Washer, Lock 3/8" SAE



Ref.	Part No.	Description
1.	123-325H	Opener Drop Tube
2.	123-299D	Drop Tube Connector Hose 1 1/4"
3.	800-008C	Clamp, Hose 1 1/2" - No. 24
4.	800-029C	Clamp, Grass Seed Hose
5.	123-306D	Hose, Grass Seed Y
6.	123-203D	Hose, Press Wheel Mount
7.	800-060C	Cable Tie, 3"



Great Plains Manufacturing, Inc.

Corporate Office: P.O. Box 5060
Salina, Kansas 67402-5060 USA
