

Installation Instructions



15P and 20P Series Drill Small Seeds Option and Walkboard Update

Used with:

- 1510P and 1520P Drills
- 2010P and 2020P Drills



When you see this symbol, the subsequent instructions and warnings are serious - follow without exception. Your life and the lives of others depend on it!

General Information

These instructions explain how to install the small-seeds attachment and walkboard update. The small-seeds attachment mounts behind the main drill box and allows you to evenly seed very fine seeds.

These instructions apply to:

133-171A	15P 7 1/2" Small Seeds Option
133-172A	15P 10" Small Seeds Option
133-173A	20P 7 1/2" Small Seeds Option
133-174A	20P 10" Small Seeds Option
133-176A	15P Small Seeds Update, for drills built prior to Nov. 2001 without a flip-up walkboard.
133-183A	20P Small Seeds Update, for drills built prior to Nov. 2001 without a flip-walkboard.
133-184A	15P Small Seeds Update, for drills built prior to Nov. 2001 with a flip-up walkboard.
133-185A	20P Small Seeds Update, for drills built prior to Nov. 2001 with a flip-up walkboard.

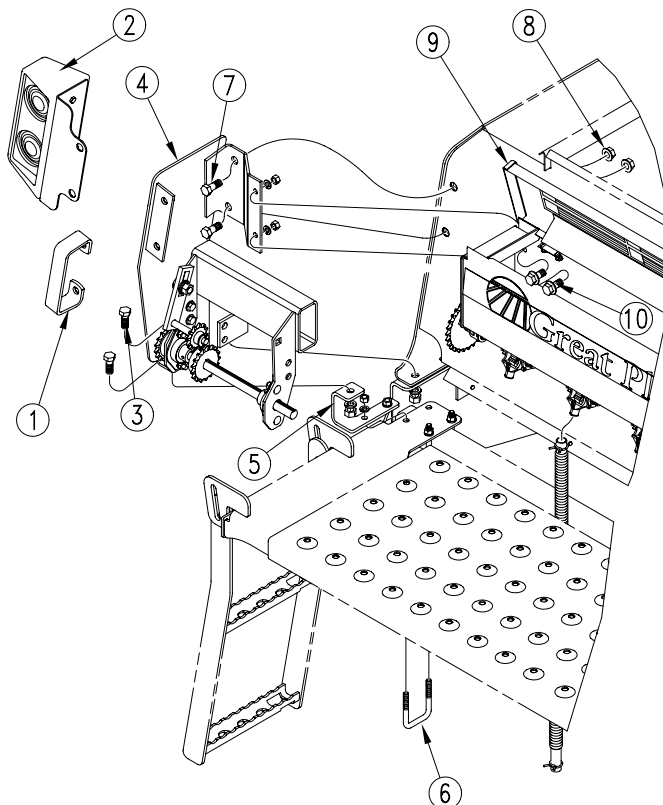


Figure 1
Small Seeds Box LH

Manual Update

Refer to the drill operator's manual for detailed information on safely operating, adjusting, troubleshooting and maintaining the small-seeds attachment. Refer to the parts manual for part identification.

- 15P Series Drill Operator's Manual 118-732M
- 20P Series Drill Operator's Manual 118-740M
- 15P Series Drill Parts Manual 118-732P
- 20P Series Drill Parts Manual 118-740P

Definitions

Right and left as used in this manual are determined by facing the direction the drill will travel in the field.

Assembly Instructions

For drills without flip up walkboards it will be necessary to first install a walkboard update kit. Refer to the information at the left of to determine which kit applies to your drill then follow the instructions starting on page 7 to update your walkboards.

Small Seeds Box and Rear Drive Assembly

Refer to Figure 1

1. Working at left-hand side of drill remove handle (1) and light assembly (2) from back side of main drill box and set aside. Keep hardware for later use. Remove and save 1/2" x 1 1/4" bolt (3), lock washer and nut which joins main drill box to drill frame.
2. Remove nuts and lock washers on the outside U-bolt (6) and attach mount channel (5).
3. Fasten top of mount (4) using 1/2" x 1 1/4" bolts (7) supplied with kit, and 1/2" flange nuts (8) removed in step 1 to the rear of main drill box at the holes where the handle and light assembly were removed.
4. Attach lower part of mount (4) to the back hole of the mount channel (5) using 1/2" x 1 1/4" bolt, 1/2" lock washer and 1/2" nut supplied in kit. At the front hole mount to main drill box and drill frame using 1/2" x 1 1/4" bolt, lock washer and nut removed in step 1.

Refer to Figure 2 page 2

5. Remove 3/8" x 1" bolts (1) and 3/8" flange nuts (2) from main drill box and set aside for later use. (see figure 2, page 2)

Refer to Figure 1

6. Attach the left-hand side of the small seeds box (9) to the mount (4) using 3/8" x 1" hex flange bolt (10), 3/8"

Assembly

lock washer and 3/8" nut. Leave mount nuts and bolts loose.

Refer to Figure 2

7. Align the right-hand side of small seeds box (3) with the holes in main drill box and insert 3/8" x 1" hex flange bolt removed in step 5. Hold reinforcement strap (4) to the inside of main drill box and secure with 3/8" flange lock nut removed in step 5.
8. On 15 and 20 foot drills, repeat above steps to install right-hand small seeds box to the right-hand side of the drill.

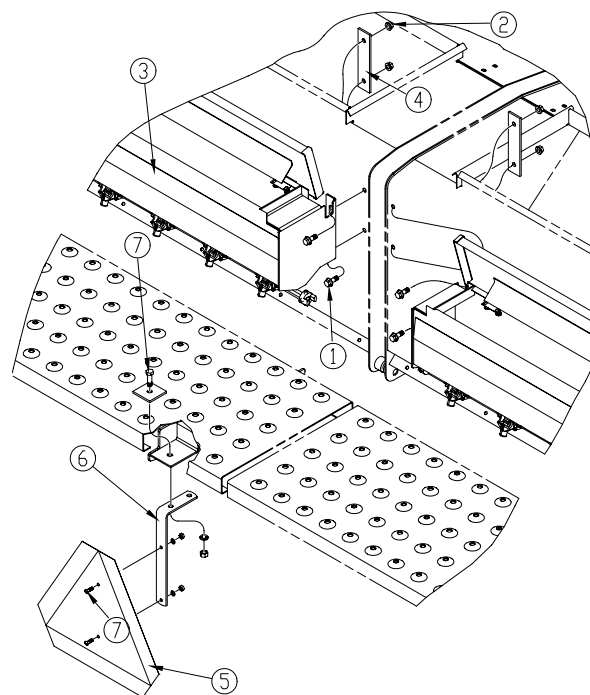


Figure 2
Small Seeds Box RH

Refer to Figure 3

9. Mount Slow Moving Vehicle sign (5) to bracket (6) using 1/4" x 1/2" round head screws, 1/4" lock washers and 1/4" nuts supplied in kit. Remove 3/8" nut (7) and 3/8" lock washer from bolt under the walkboard, reuse to mount SMV sign.
10. Tighten all hardware. If you are installing a 15-foot box, check operation of flex coupler where main drill box meet. Set both boxes at 50 percent open, and make sure that the ears on couplers are overlapping by about 3/8" (9.5 mm).

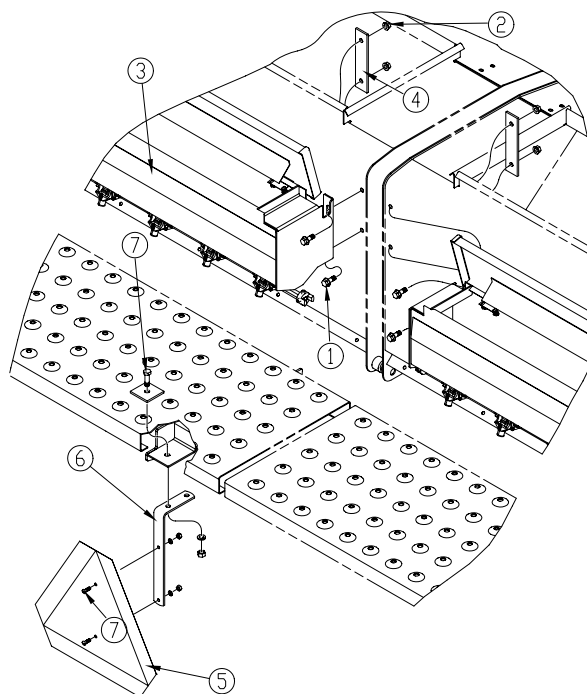


Figure 2
Small Seeds Box RH

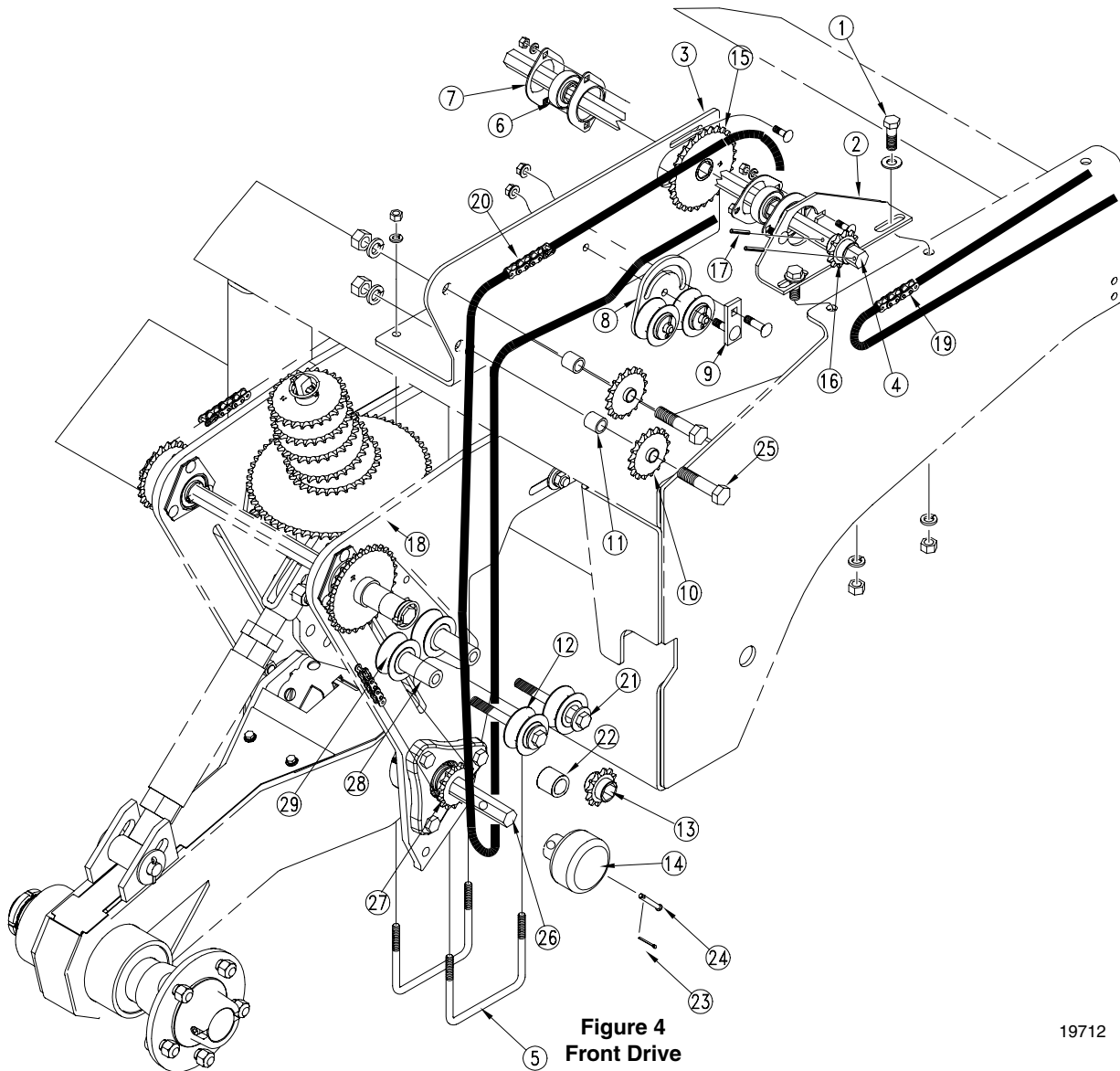


Figure 4
Front Drive

19712

Front Drive Assembly

Note: For 15P drills with serial numbers 10513C and below and 20P drills with serial numbers 6915B and below it will be necessary to install a new gauge wheel pivot shaft and longer idler tubes supplied in the appropriate walk-board update.

Refer to Figure 4

1. Loosen range chain. Remove cotter pin (23) from pin (24) and slide acrometer (14) from shaft (26). Remove range sprocket (27).
2. Using new shaft P/N: 120-316D supplied in update kit slowly push out old shaft. Be careful to keep all machine washers in place.

Note: It may be necessary to loosen the chain going to the gauge wheel. It should not be necessary to remove the chain.

3. Continue to push the new shaft until the hole in the shaft is visible on the outside of the right-hand bearing. Remove roll pin from old shaft and install in the new shaft.

4. Push shaft back to the left until roll pin is set against the bearing. Reinstall range sprocket (27). Slide 12-tooth sprocket (13) onto 7/8" shaft and reinstall acrometer (14), pin (24) and cotter pin (23).
5. Remove hex bolts and short tube from range chain idlers and replace with 1" x 3 5/16" tube (29) and 1/2" x 4 3/4" hex bolt (21).

Note: On 20P drills the above steps will have to be repeated on the right-hand side of drill substituting right for left and left for right.

Refer to Figure 4

6. Working at front, left-hand side of drill, remove two 1/2" x 1 1/4" bolts (1) that join main drill box to drill frame. Install left-hand rear drive bearing mount plate (2) using 1/2" x 1 1/2" bolts, 1/2" flat washers, 1/2" lock washers and 1/2" nuts from small seeds kit. Leave these bolts loose.
7. Bolt left-hand jack shaft mount plate (3) to frame tube using two 3/8" U-bolts (5). Position mount so the outside measures 1-1/2 inches from the outside of the gauge wheel frame (18). Tighten bolts for plate (3).

Assembly

8. Install hex-bore bearings (6) on plates (2) and (3) using flangettes (7) and hardware as shown. Make sure and place bearings on side of plates as illustrated. Tighten left-hand bearing and leave the right-hand bearing loose for now.
9. Slide 7/8" hex jackshaft (4) through hex-bore bearing (6) mounted on plate (3). Slip shaft through 29-tooth sprocket (15) leaving set screw loose. Slide into hex-bore bearing mounted on plate (2). Slide 12-tooth sprocket (16) onto hex shaft and secure shaft by installing roll pins (17).

Note: Skip steps 10, 11 and 12 if you had to update your gauge wheel per page 3.

10. Remove cotter pin (23) from pin (24) and slide acrometer (14) and plastic spacer (22) off 7/8" hex shaft. Discard plastic spacer (22).
11. Slide 12-tooth sprocket (13) onto 7/8" shaft and reinstall acrometer (14), pin (24) and cotter pin (23).
12. Remove bolts (21) and slide idlers (12) over idler shafts. reinstall bolts.
13. Slide 17-tooth idler sprockets (10) and idler spacers (11) over 5/8" x 2 3/4" bolts (25) in order shown. Install bolts through holes in plate (3) as shown and secure with 5/8" lock washers and 5/8" nuts.
14. Mount double spool idler assembly (8) to mounting plate (3) as shown using idler bolt plate (9) and 3/8" x 1 1/2" carriage bolts and 3/8" flange nuts.
15. Align 29-tooth sprocket with 17-tooth idler sprockets (10) and tighten set screw.
16. Install chain (20) around sprockets (15) and (13) through idlers (8) and (12) and over idler sprockets (10) as shown.

Chain Installation and Tightening

Refer to Figure 5

1. Working at rear of drill align inner 17-tooth sprocket (1) with small-seeds-box sprocket (2). Install 61-pitch chain and remove chain slack with idler sprocket (3).

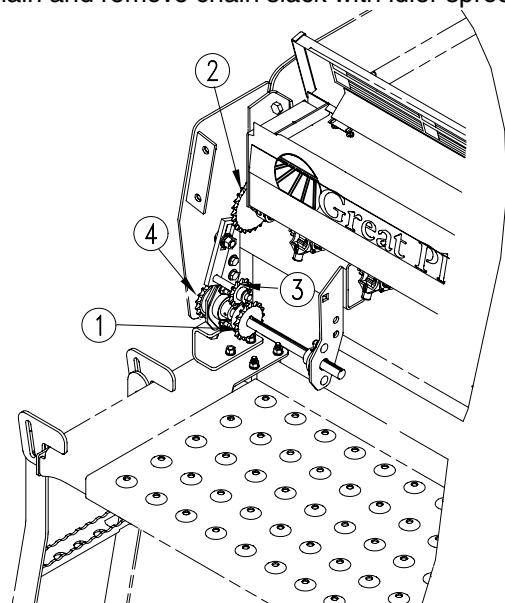


Figure 5
Rear Drive

19756

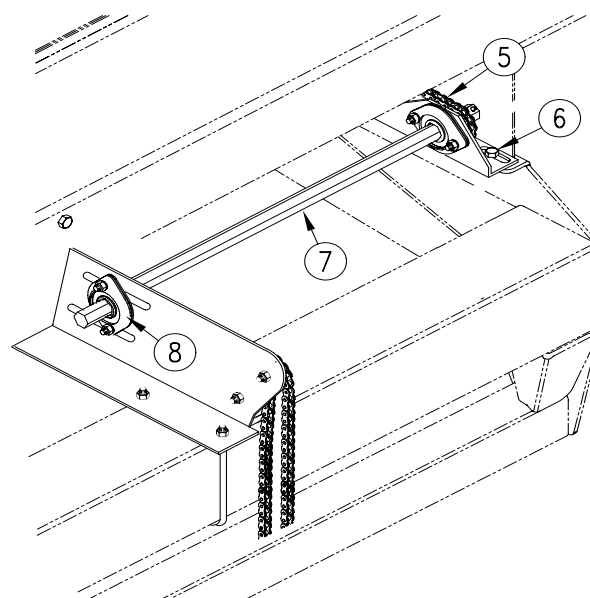


Figure 6
Chain Installation

19757

Refer to Figures 5 and 6

2. Thread 98-pitch chain back through the cutout in box, around outer 17-tooth sprocket (4), figure 5, and back to front 12-tooth sprocket (5), figure 6. After connecting chain, check alignment of sprocket (1), figure 5, on rear of drill with sprocket (5), figure 6, at front. Move rear sprocket if needed. To tighten this chain move 7/8" hex jackshaft (7), figure 6, forward by using slots in bearing plate (6), figure 6, and slots at bearing (8), figure 6. After removing excess slack, tighten bolts holding the plate and bearing.

Assembly

Refer to Figure 7

3. Remove slack in chain (20) by tightening the double idler spool (8).

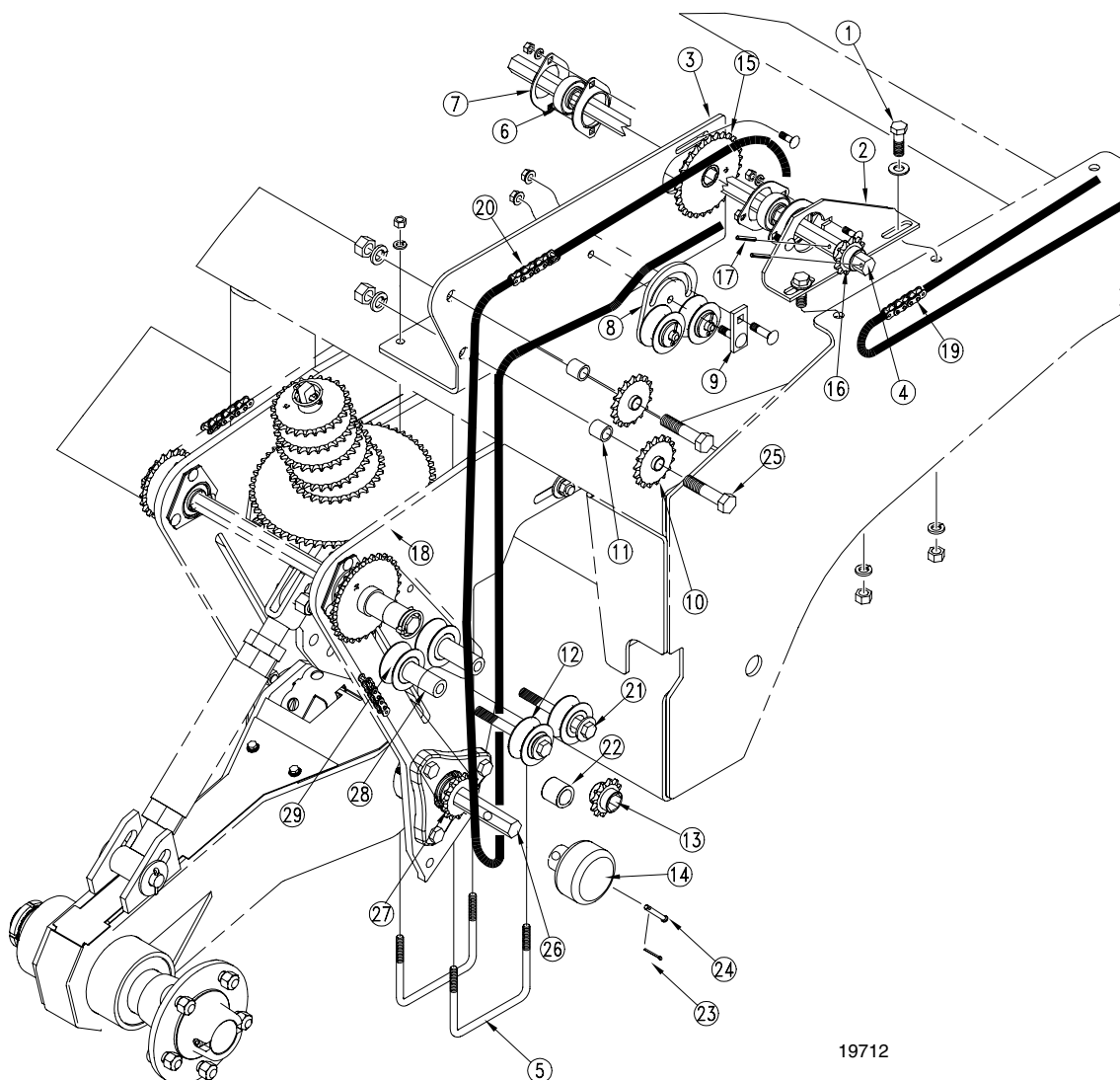


Figure 7
Tightening Chain

Handle Assembly

Refer to Figure 8

1. Place chain shield (1) over end of small-seeds box mount (2). Install handle (3) and light assembly (4) using bolts removed in step 1. Check that all hardware has been tightened.

Note: On 20P drills, repeat steps to install drive for right-hand box.

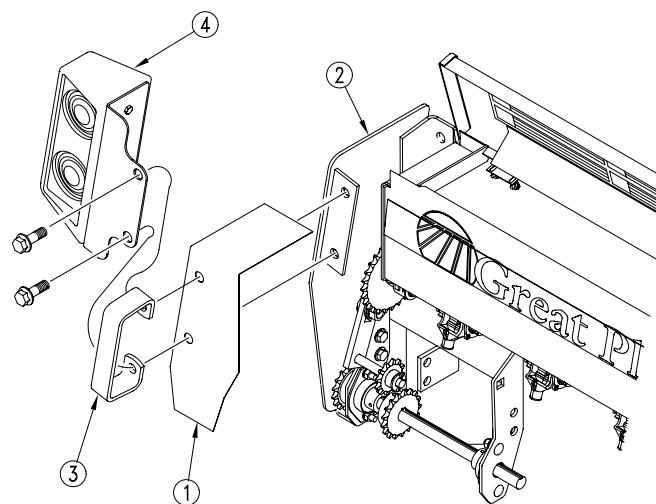


Figure 8
Handle and Cover Assembly

19760

Assembly

Seed Tube Attachment

Refer to Figure 9

1. For 10 series openers, slide seed tube (1) (P/N 133-193H) through opener with bend pointing backward in front of press wheel and attach using screws (2) supplied in kit.
2. For 10 series openers using microband and small seeds use tube (3) (P/N 116-220H). Slide tube through the opener with the bend pointing forward, in front of the seed lock wheel. Secure with screws (2). Install Y-tube kit (4) (P/N 133-192V) to the microband and seed hose (3) using hose and hose clamps supplied in the kit.
3. Connect seed tube hoses to the small seeds box with hose clamps supplied in the kit. Attach other end of hoses to the seed (1) tubes.

Refer to Figure 10

4. For 20 series openers, slide seed tube (1) (P/N 133-188H) through opener and attach as shown using screws (2) supplied in kit.
5. For 20 series openers using microband and small seeds use tube (3) (P/N 116-221H) slide tube through the opener with the bend pointing forward, in front of the seed lock wheel. Secure with screws (2). Install Y-tube kit (4) (P/N 133-192V) to the microband and or seed tube (3) using hose and hose clamps supplied in the kit.

Note: For some early model 20 series openers it may be necessary to drill a hole to accommodate the mounting screw. In this case use the insecticide tube as a guide to drill a 11/64" hole in the opener body. Be sure to hold tube up as far as it will go. Attach with screw provided. A notch will need to be added in press wheel arm for clearance. Refer to diagram below for notch dimensions.

Dimensions for Notch

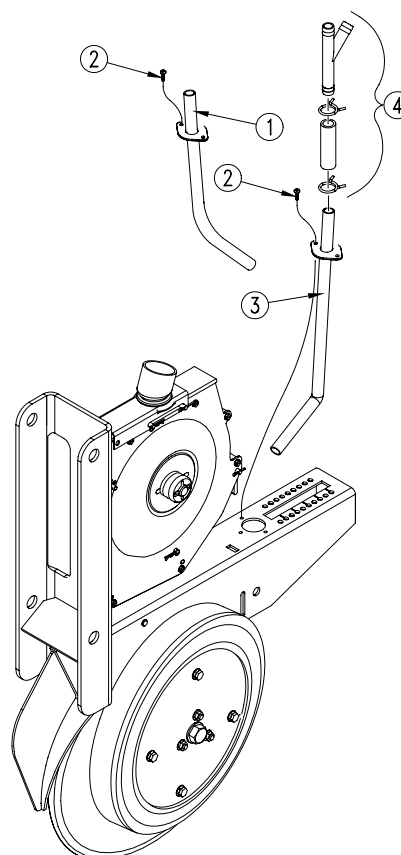
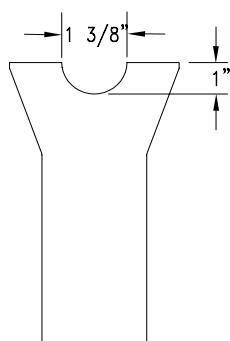


Figure 9
10 Series Opener

19818

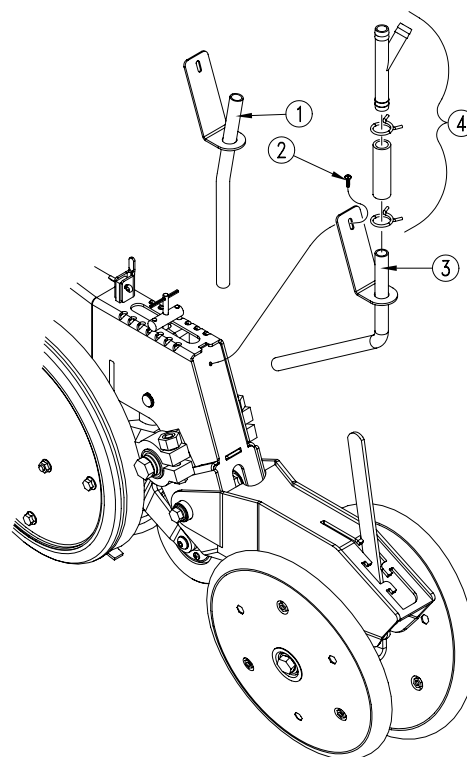


Figure 10
20 Series Opener

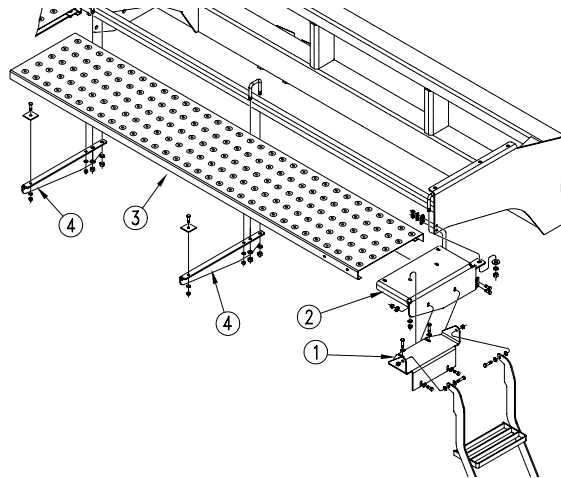
19819

Walkboard Update for Drills Without Flip Up Walkboards

15P and 20P

Refer to Figure 11

1. Unbolt the ladder adaptor bracket (1) from both ends of the drill. Discard the ladder, hinge hardware and adaptor bracket.
2. Remove and discard the original end panels (2) from the drill. Keep the bolts and nuts to use later.
3. Remove the existing walkboards and keep the hardware for later use.
4. Modify existing drill walkboards (3) by cutting off and discarding the unnotched ends. The reworked length will be 86" on 15' and 114 13/16" on 20'.
5. Remove and discard the walkboard support arms (4). Keep U-bolts, opener spring adjustment tool and walkboard clamp hardware.



19308

Figure 11

Refer to Figure 12

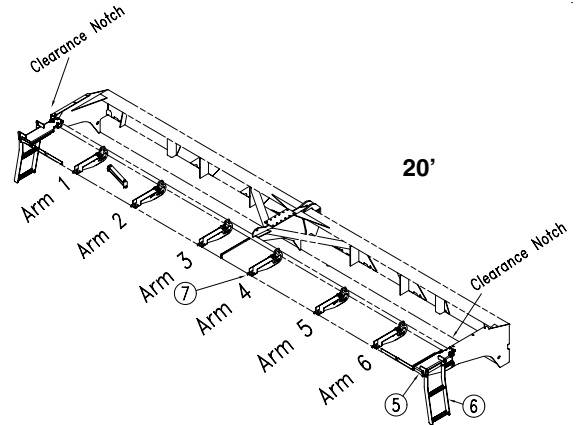
6. Install two new walkboard end panels (1) on the drill reusing bolts removed in step 2 above and U-bolts supplied in kit. Install the new ladders (2) supplied in kit.
7. Assemble new walkboard support arms (3) to drill using hardware removed in step 4 above. Refer to the list below for placement of arms. Measure from the center of the drill to the center of the support arm as follows:

15' Drill

- Arm 1 - 55"
- Arm 2 - 10"
- Arm 3 - 10"
- Arm 4 - 55"

20' Drill

- Arm 1 - 90"
- Arm 2 - 55"
- Arm 3 - 15"
- Arm 4 - 15"
- Arm 5 - 55"
- Arm 6 - 90"



19276

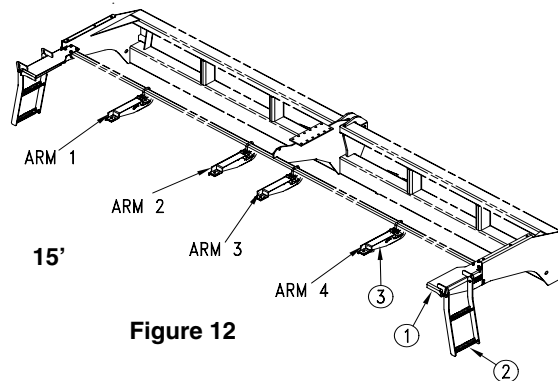


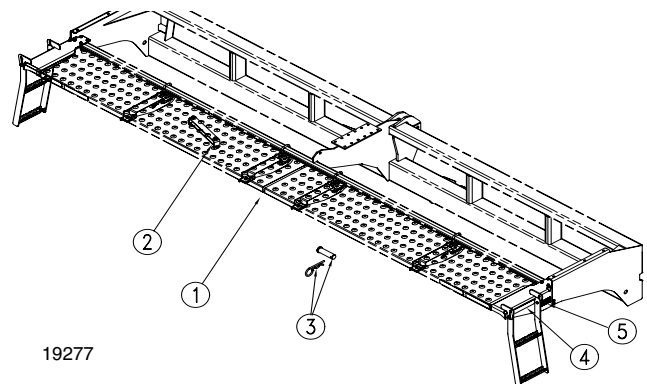
Figure 12

Refer to Figure 13

8. Install walkboards with the notched end to the outside of the drill using hardware removed in step 3 above.

NOTE: The distance between the walkboards (1) will be 3/4".

9. Assemble opener spring adjustment (2) tool to the underside of the walkboard reusing existing hardware
10. Place decals on walkboard end plates as indicated in drawing. 838-265C Amber reflector (4), place inside the ladder facing out. (Both sides of drill) 838-102C falling hazard decal (5), place inside the ladder facing out. (Both sides of drill)
11. Use pin clevis and pin hair cotter (3) to lock support arm 1 and 4 in place.



19277

Figure 13

Assembly

Walkboard Update for Drills With Flip Up Walkboards

15P and 20P

Refer to 14

1. Unbolt the ladder (1) from both ends of the drill. Discard the adaptor bracket and ladder. Remove and discard the original end panels (2) from the drill. Keep the bolts, nuts and 2 of the U-bolts to use later.

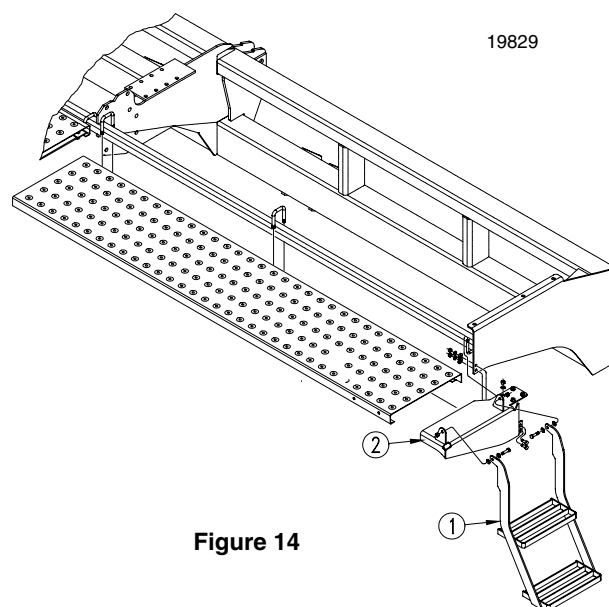


Figure 14

Refer to Figure 15

2. Install two new walkboard end panels (5) on the drill re-using hardware removed in step 2 above. Use a new U-bolt supplied in update kit in outside hole of new end panel. Install the new ladders (6).

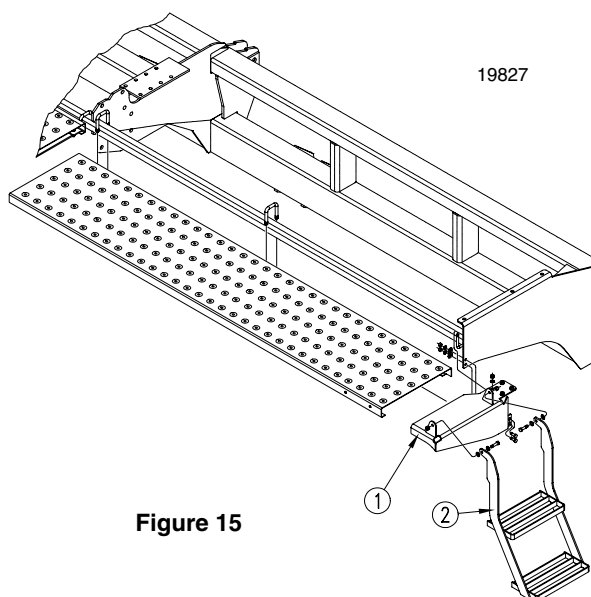


Figure 15

Refer to Figure 16

3. Place decals on walkboard end panels as indicated in drawing. 838-265C Amber reflector (4), place inside the ladder facing out. (Both sides of drill) 838-102C falling hazard decal (5), place inside the ladder facing out. (Both sides of drill)
4. Use pin clevis and pin hair cotter (3) to lock support arm 1 and 4 in place.

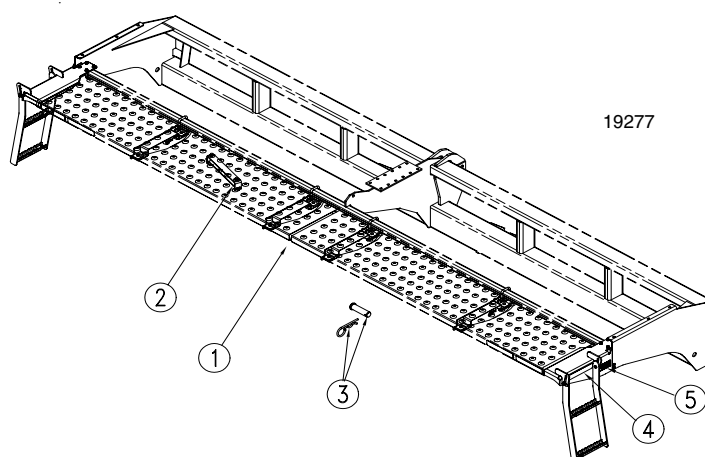


Figure 16

Listing of Parts**133-171A 15' 7 1/2" 15P Small Seeds Option**

Your Kit Includes

Qty.	Part No.	Part Description
2	116-240D	MB Idler Spacer
1	123-491D	Handle Mount Left Hand Chain Guard
1	123-492D	Handle Mount Right Hand Chain Guard
1	123-517D	Rear Drive Bearing Mount Plate
2	123-520D	Seed Box Reinforcement Str
1	123-803L	3pt 15'-7.5sml Sd Box Assembly
1	123-804L	3pt 15'-7.5sml Sd Box Assembly
1	123-829H	3pt Small Seeds Box Mount Right Hand Non
1	133-057D	3pt-p Small Seeds Jack Shaft
1	133-058D	3pt-p Small Seeds Jk Sft Mount
1	133-060D	Smv Mount Bracket
1	133-061D	3pt-p Small Seeds Mount Channel
1	133-062D	3pt-p Small Seeds Mount Channel
1	133-175K	3pt-p Smlsds Left Hand Mount & drive
1	133-187m	Manual 3pt-p Small Seeds
1	136-093D	Chain, Roller #40 x 60 Pitches
1	136-152D	Chain, Roller #40 x 96 Pitches
1	136-188D	Chain, Roller #40 x 218 Pitches W
1	402-140S	Double Spool Idler Assembly
1	402-242D	Idler Bolt Plate
48	800-321C	Hose Clamp No.12 x 3/4" ID
2	801-018C	Screw, Round Head 1/4"-20 X 5/8"
6	802-034C	Bolt, Hex Head 1/2"-13 x 1 1/4"
2	802-091C	Bolt, Hex Head 1/2"-13 x 1 1/2"
2	802-281C	Bolt, Hex Head 5/8"-11 x 2 3/4"
4	802-282C	Bolt, Carriage 5/16"-18 x 1
4	802-388C	Bolt, Flange 3/8"-16 x 1
2	802-453C	Bolt, Carriage 3/8"-16 x 1 1/2"
2	803-006C	Nut, Hex 1/4"-20
4	803-008C	Nut, Hex 5/16"-18
8	803-014C	Nut, Hex 3/8"-16
2	803-020C	Nut, Hex 1/2"-13
2	803-021C	Nut, Hex 5/8"-11
2	803-209C	Nut Flange Lock 3/8"-16
2	804-006C	Washer, Lock Spring 1/4"
4	804-009C	Washer, Lock Spring 5/16" PI
8	804-013C	Washer, Lock Spring 3/8"
2	804-015C	Washer, Lock Spring 1/2"
2	804-016C	Washer, Flat 1/2" SAE
2	804-022C	Washer, Lock Spring 5/8"
2	805-024C	Pin, Roll 3/16" x 1 x 1/2"
2	806-165C	U-bolt 3/8"-16 X 5 x 1/32" X 4
2	808-046C	Sprocket 40a17 Idler
1	808-168C	Sprocket 40b29 X 7/8" Hex Bore
2	808-219C	Sprocket 40c12 X 7/8" Hex Bore
24	816-358C	SGS Hose 122 Ribs
2	817-406C	Idler 1 PC 2.38 x 1.01 x 1.062
1	818-055C	Decal Slow Moving-Galv. BA
4	822-032C	Flangette 52 MST
2	822-119C	Brg. 7/8 Hex BR 52 MM Spherical OD

Listing of Parts

133-172A 15' 10" 15P Small Seeds Option

Your Kit Includes

Qty.	Part No.	Part Description
2	116-240D	MB IDLER SPACER
1	123-491D	HANDLE MOUNT LH CHAIN GUARD
1	123-492D	HANDLE MOUNT RH CHAIN GUARD
1	123-517D	REAR DRIVE BRG MOUNT PLATE LH
2	123-520D	SEED BOX REINFORCEMENT STRAP
1	123-807L	3PT 15'-10SML SDS BOX ASSY LH
1	123-808L	3PT 15'-10SML SDS BOX ASSY RH
1	123-829H	3PT SML SDS BOX MNT RH NON DRV
1	133-057D	3PT-P SML SDS JACK SHAFT
1	133-058D	3PT-P SML SDS JK SFT MOUNT LH
1	133-060D	SMV MOUNT BRACKET
1	133-061D	3PT-P SML SDS MOUNT CHANNEL LH
1	133-062D	3PT-P SML SDS MOUNT CHANNEL RH
1	133-175K	3PT-P SMLSDS LH MOUNT&DRIVE
1	133-187M	MANUAL 3PT-P SMALL SEEDS
1	136-093D	CHAIN RL #40 60 PITCHES
1	136-152D	CHAIN RL #40 96 PITCHES
1	136-188D	CHAIN RL #40 218 PITCHES W/CON
1	402-140S	DOUBLE SPOOL IDLER ASSY
1	402-242D	IDLER BOLT PLATE
36	800-321C	HOSE CLAMP NO.12 3/4 ID
2	801-018C	SCREW RD HD 1/4-20 X 5/8
6	802-034C	HHCS 1/2-13X1 1/4 GR5
2	802-091C	HHCS 1/2-13X1 1/2 GR5
2	802-281C	HHCS 5/8-11X2 3/4 GR5
4	802-282C	RHSNB 5/16-18X1 GR5
4	802-388C	HFS 3/8-16X1 GR5
2	802-453C	RHSNB 3/8-16X1 1/2 GR5
2	803-006C	NUT HEX 1/4-20 PLT
4	803-008C	NUT HEX 5/16-18 PLT
8	803-014C	NUT HEX 3/8-16 PLT
2	803-020C	NUT HEX 1/2-13 PLT
2	803-021C	NUT HEX 5/8-11 PLT
2	803-209C	NUT FLANGE LOCK 3/8-16 PLT
2	804-006C	WASHER LOCK SPRING 1/4 PLT
4	804-009C	WASHER LOCK SPRING 5/16 PLT
8	804-013C	WASHER LOCK SPRING 3/8 PLT
2	804-015C	WASHER LOCK SPRING 1/2 PLT
2	804-016C	WASHER FLAT 1/2 SAE PLT
2	804-022C	WASHER LOCK SPRING 5/8 PLT
2	805-024C	PIN ROLL 3/16X 1 1/2 PLT
2	806-165C	U-BOLT 3/8-16 X 5 1/32 X 4 1/4
2	808-046C	SPKT 40A17 IDLER
1	808-168C	SPKT 40B29 X 7/8 HEX BORE & SS
2	808-219C	SPKT 40C12 X 7/8 HEX BORE
18	816-358C	SGS HOSE 122 RIBS
2	817-406C	IDLER 1 PC 2.38X1.01X1.062
1	818-055C	DECAL SLOW MOVING-GALV. BACKED
4	822-032C	FLANGETTE 52 MST
2	822-119C	BRG.7/8HEX BR 52MM SPHRICAL OD

Listing of Parts**133-173A 20' 7 1/2" 20P Small Seeds Option**

Your Kit Includes

Qty.	Part No.	Part Description
4	116-240D	MB IDLER SPACER
1	123-491D	HANDLE MOUNT LH CHAIN GAUR
1	123-492D	HANDLE MOUNT RH CHAIN GUAR
1	123-517D	REAR DRIVE BRG MOUNT PLATE
1	123-518D	REAR DRIVE BRG MOUNT PLATE
2	123-520D	SEED BOX REINFORCEMENT STR
1	123-813L	3PT 20'-7.5SML SD BOX ASSY
1	123-814L	3PT 20'-7.5SML SD BOX ASSY
2	133-057D	3PT-P SML SDS JACK SHAFT
1	133-058D	3PT-P SML SDS JK SFT MOUNT
1	133-059D	3PT-P SML SDS JK SFT MOUNT
1	133-060D	SMV MOUNT BRACKET
1	133-061D	3PT-P SML SDS MOUNT CHANNE
1	133-062D	3PT-P SML SDS MOUNT CHANNE
1	133-175K	3PT-P SMLSDS LH MOUNT&DR
1	133-177K	20-P SMLSDS RH MOUNT&DRIVE
1	133-187M	MANUAL 3PT-P SMALL SEEDS
2	136-093D	CHAIN RL #40 60 PITCHES
2	136-152D	CHAIN RL #40 96 PITCHES
2	136-188D	CHAIN RL #40 218 PITCHES W
2	402-140S	DOUBLE SPOOL IDLER ASSY
2	402-242D	IDLER BOLT PLATE
64	800-321C	HOSE CLAMP NO.12 3/4 ID
2	801-018C	SCREW RD HD 1/4-20 X 5/8
6	802-034C	HHCS 1/2-13X1 1/4 GR5
4	802-091C	HHCS 1/2-13X1 1/2 GR5
4	802-281C	HHCS 5/8-11X2 3/4 GR5
8	802-282C	RHSNB 5/16-18X1 GR5
4	802-388C	HFS 3/8-16X1 GR5
4	802-453C	RHSNB 3/8-16X1 1/2 GR5
2	803-006C	NUT HEX 1/4-20 PLT
8	803-008C	NUT HEX 5/16-18 PLT
12	803-014C	NUT HEX 3/8-16 PLT
2	803-020C	NUT HEX 1/2-13 PLT
4	803-021C	NUT HEX 5/8-11 PLT
4	803-209C	NUT FLANGE LOCK 3/8-16 PLT
2	804-006C	WASHER LOCK SPRING 1/4 PLT
8	804-009C	WASHER LOCK SPRING 5/16 PL
12	804-013C	WASHER LOCK SPRING 3/8 PLT
2	804-015C	WASHER LOCK SPRING 1/2 PLT
4	804-016C	WASHER FLAT 1/2 SAE PLT
4	804-022C	WASHER LOCK SPRING 5/8 PLT
4	805-024C	PIN ROLL 3/16X 1 1/2 PLT
4	806-165C	U-BOLT 3/8-16 X 5 1/32 X 4
4	808-046C	SPROCKET 40A17 IDLER
2	808-168C	SPKT 40B29 X 7/8 HEX BORE
4	808-219C	SPKT 40C12 X 7/8 HEX BORE
32	816-358C	SGS HOSE 122 RIBS
4	817-406C	IDLER 1 PC 2.38X1.01X1.062
1	818-055C	DECAL SLOW MOVING-GALV. BA
8	822-032C	FLANGETTE 52 MST
4	822-119C	BRG.7/8HEX BR 52MM SPHRICA

Listing of Parts

133-174A 20' 10" 20P Small Seeds Option

Your Kit Includes

Qty.	Part No.	Part Description
4	116-240D	MB IDLER SPACER
1	123-491D	HANDLE MOUNT LH CHAIN GAUR
1	123-492D	HANDLE MOUNT RH CHAIN GUAR
1	123-517D	REAR DRIVE BRG MOUNT PLATE
1	123-518D	REAR DRIVE BRG MOUNT PLATE
2	123-520D	SEED BOX REINFORCEMENT STR
1	123-817L	3PT 20'-10SML SDS BOX ASSY
1	123-818L	3PT 20'-10SML SDS BOX ASSY
2	133-057D	3PT-P SML SDS JACK SHAFT
1	133-058D	3PT-P SML SDS JK SFT MOUNT
1	133-059D	3PT-P SML SDS JK SFT MOUNT
1	133-060D	SMV MOUNT BRACKET
1	133-061D	3PT-P SML SDS MOUNT CHANNE
1	133-062D	3PT-P SML SDS MOUNT CHANNE
1	133-175K	3PT-P SMLSDS LH MOUNT&DR
1	133-177K	20-P SMLSDS RH MOUNT&DRIVE
1	133-187M	MANUAL 3PT-P SMALL SEEDS
2	136-093D	CHAIN RL #40 60 PITCHES
2	136-152D	CHAIN RL #40 96 PITCHES
2	136-188D	CHAIN RL #40 218 PITCHES W
2	402-140S	DOUBLE SPOOL IDLER ASSY
2	402-242D	IDLER BOLT PLATE
48	800-321C	HOSE CLAMP NO.12 3/4 ID
2	801-018C	SCREW RD HD 1/4-20 X 5/8
6	802-034C	HHCS 1/2-13X1 1/4 GR5
4	802-091C	HHCS 1/2-13X1 1/2 GR5
4	802-281C	HHCS 5/8-11X2 3/4 GR5
8	802-282C	RHSNB 5/16-18X1 GR5
4	802-388C	HFS 3/8-16X1 GR5
4	802-453C	RHSNB 3/8-16X1 1/2 GR5
2	803-006C	NUT HEX 1/4-20 PLT
8	803-008C	NUT HEX 5/16-18 PLT
12	803-014C	NUT HEX 3/8-16 PLT
2	803-020C	NUT HEX 1/2-13 PLT
4	803-021C	NUT HEX 5/8-11 PLT
4	803-209C	NUT FLANGE LOCK 3/8-16 PLT
2	804-006C	WASHER LOCK SPRING 1/4 PLT
8	804-009C	WASHER LOCK SPRING 5/16 PL
12	804-013C	WASHER LOCK SPRING 3/8 PLT
2	804-015C	WASHER LOCK SPRING 1/2 PLT
4	804-016C	WASHER FLAT 1/2 SAE PLT
4	804-022C	WASHER LOCK SPRING 5/8 PLT
4	805-024C	PIN ROLL 3/16X 1 1/2 PLT
4	806-165C	U-BOLT 3/8-16 X 5 1/32 X 4
4	808-046C	SPROCKET 40A17 IDLER
2	808-168C	SPKT 40B29 X 7/8 HEX BORE
4	808-219C	SPKT 40C12 X 7/8 HEX BORE
24	816-358C	SGS HOSE 122 RIBS
4	817-406C	IDLER 1 PC 2.38X1.01X1.062
1	818-055C	DECAL SLOW MOVING-GALV. BA
8	822-032C	FLANGETTE 52 MST
4	822-119C	BRG.7/8HEX BR 52MM SPHRICA

Listing of Parts**133-176A 15' Small Seeds Update**

Your Kit Includes

Qty.	Part No.	Part Description
2	116-245D	SHAFT 7/8 HEX GW UPPER FRNT GN
4	119-254D	WALKBOARD PIVOT BASE
4	119-277H	WALKBOARD HINGE WELDMENT
4	119-278D	WALKBOARD LADDER PIVOT BUSHING
1	119-292H	WALKBOARD HINGED END MOUNT LH
1	119-293H	WALKBOARD HINGED END MOUNT RH
2	119-294H	3PT HINGED WALKBOARD LADDER
4	120-313D	TUBE RND 1 OD X 7/32W X 3.31
5	120-315D	SPACER TUBE 1 ID X 1.25
2	120-316D	SHAFT 7/8 HEX GW PIVOT LONG
4	802-079C	HHCS 3/8-16X1 1/4 GR5
4	802-091C	HHCS 1/2-13X1 1/2 GR5
4	802-201C	HHCS 1/2-13X4 3/4 GR5
12	803-014C	NUT HEX 3/8-16 PLT
4	803-019C	NUT LOCK 1/2-13 PLT
4	804-011C	WASHER FLAT 3/8 USS PLT
12	804-013C	WASHER LOCK SPRING 3/8 PLT
12	804-016C	WASHER FLAT 1/2 SAE PLT
28	804-061C	WASHER MACH 1.50 X 1.00 X 18GA
2	805-127C	PIN CLEVIS 1/2 X 1 3/4
2	805-143C	PIN HAIR COTTER.120 PLT
4	806-166C	U-BOLT 3/8-16 X 2 1/32 X 3/4
2	838-265C	DECAL AMBER REFLECTOR
2	838-102C	DECAL DANGER FALLING HAZZARD

133-183A 20' Small Seeds Update

Your Kit Includes

Qty.	Part No.	Part Description
2	116-245D	SHAFT 7/8 HEX GW UPPER FRNT LG
6	119-254D	WALKBOARD PIVOT BASE
6	119-277H	WALKBOARD HINGE WELDMENT
4	119-278D	WALKBOARD LADDER PIVOT BUSHING
1	119-292H	WALKBOARD HINGED END MOUNT
1	119-293H	WALKBOARD HINGED END MOUNT
2	119-294H	3PT HINGED WALKBOARD LADDER
4	120-313D	TUBE RND 1 OD X 7/32W X 3.31
5	120-315D	SPACER TUBE 1 ID X 1.25
2	120-316D	SHAFT 7/8 HEX GW PIVOT LONG
4	802-079C	HHCS 3/8-16X1 1/4 GR5
6	802-091C	HHCS 1/2-13X1 1/2 GR5
4	802-201C	HHCS 1/2-13X4 3/4 GR5
12	803-014C	NUT HEX 3/8-16 PLT
6	803-019C	NUT LOCK 1/2-13 PLT
4	804-011C	WASHER FLAT 3/8 USS PLT
12	804-013C	WASHER LOCK SPRING 3/8 PLT
18	804-016C	WASHER FLAT 1/2 SAE PLT
28	804-061C	WASHER MACH 1.50 X 1.00 X 18GA
2	805-127C	PIN CLEVIS 1/2 X 1 3/4
2	805-143C	PIN HAIR COTTER.120 PLT
4	806-166C	U-BOLT 3/8-16 X 2 1/32 X 3/4
2	838-265C	DECAL AMBER REFLECTOR
2	838-102C	DECAL DANGER FALLING HAZZARD

Listing of Parts

133-184A 15' Small Seeds Update

Your Kit Includes

Qty.	Part No.	Part Description
2	116-245D	SHAFT 7/8 HEX GW UPPER FRNT LG
4	119-278D	WALKBOARD LADDER PIVOT BUSHING
1	119-292H	WALKBOARD HINGED END MOUNT
1	119-293H	WALKBOARD HINGED END MOUNT
2	119-294H	3PT HINGED WALKBOARD LADDER
4	120-313D	TUBE RND 1 OD X 7/32W X 3.31
5	120-315D	SPACER TUBE 1 ID X 1.25
2	120-316D	SHAFT 7/8 HEX GW PIVOT LONG
4	802-079C	HHCS 3/8-16X1 1/4 GR5
4	802-201C	HHCS 1/2-13X4 3/4 GR5
8	803-014C	NUT HEX 3/8-16 PLT
4	804-011C	WASHER FLAT 3/8 USS PLT
8	804-013C	WASHER LOCK SPRING 3/8 PLT
28	804-061C	WASHER MACH 1.50 X 1.00 X 18GA
2	806-166C	U-BOLT 3/8-16 X 2 1/32 X 3
2	838-265C	DECAL AMBER REFLECTOR
2	838-102C	DECAL DANGER FALLING HAZZARD

133-185A 20' Small Seeds Update

Your Kit Includes

Qty.	Part No,	Part Description
2	116-245D	SHAFT 7/8 HEX GW UPPER FRNT LG
4	119-278D	WALKBOARD LADDER PIVOT BUSHING
1	119-292H	WALKBOARD HINGED END MOUNT
1	119-293H	WALKBOARD HINGED END MOUNT
2	119-294H	3PT HINGED WALKBOARD LADDER
4	120-313D	TUBE RND 1 OD X 7/32W X 3.31
5	120-315D	SPACER TUBE 1 ID X 1.25
2	120-316D	SHAFT 7/8 HEX GW PIVOT LONG
4	802-079C	HHCS 3/8-16X1 1/4 GR5
4	802-201C	HHCS 1/2-13X4 3/4 GR5
8	803-014C	NUT HEX 3/8-16 PLT
4	804-011C	WASHER FLAT 3/8 USS PLT
8	804-013C	WASHER LOCK SPRING 3/8 PLT
28	804-061C	WASHER MACH 1.50 X 1.00 X 18GA
2	806-166C	U-BOLT 3/8-16 X 2 1/32 X 3
2	838-265C	DECAL AMBER REFLECTOR
2	838-102C	DECAL DANGER FALLING HAZZARD