

Update Instructions



Trash Guard Update

Used with:

- All Series Openers



When you see this symbol, the subsequent instructions and warnings are serious - follow without exception. Your life and the lives of others depend on it!

General Information

These instructions explain how to install the trash guard. This update will install on any opener to prevent trash and foreign objects from becoming embedded in the press wheel arm. Trash and other foreign objects embedded in the press wheel arm may cause damage to the implement or may cause the implement to malfunction.

These instructions apply to:

121-005D 00 Trash Guard

Tools Required

- Telescopic Magnetic Pointer
- Welder

Assembly Instructions

NOTE: Trash guards need to be ordered two per opener.

Refer to Figure 1

1. Using a telescopic magnetic pointer, align surface of trash guard parallel with edge (1) of opener body.
2. With notch (4) on trash guard towards the outside of opener body, push trash guard rearward wedging it between disc shield (2) and bottom channel (3).
3. Tack weld in place.

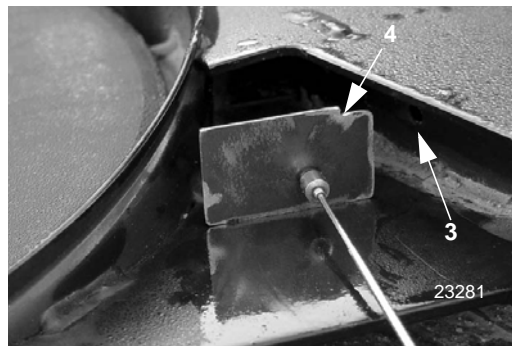


Figure 1

2 | Trash Guard Update

Refer to Figure 2

4. Once weldment is in place, weld trash guard to opener along bottom (1) and top (2) of weldment.
5. Repeat Steps 1 and 2 on other side of opener.
6. Paint black.



Figure 2