



## Seed Flap and Tube Kit

### Used with:

- 00 Series Openers
- 10 Series Openers
- End-Wheel, No-Till Openers



When you see this symbol, the subsequent instructions and warnings are serious - follow without exception. Your life and the lives of others depend on it!

## General Information

These instructions explain how to install the new seed tube and flap. The tube and flap are designed to improve seed placement. This modification improves the performance and reliability of the original equipment.

These instructions apply to:

122-245K Seed Flap and Tube Kit, Seed-Lok

## Manual Update

Refer to the drill operator's manual for detailed information on safely operating, adjusting, troubleshooting and maintaining the drill. Refer to the parts manual for part identification.

## Before You Start

On page 2 is a detailed listing of parts included in the update kits. Use this list to inventory parts received.

## Assembly Instructions

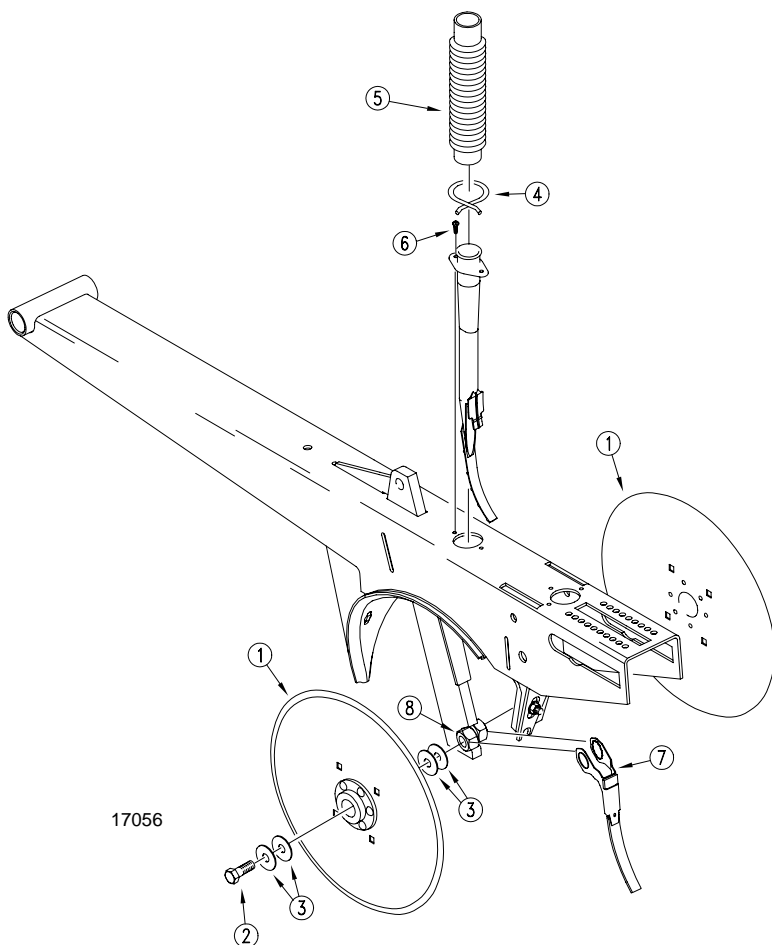


Figure 1  
Seed Tube and Flap Assembly

Refer to Figure 1.

1. Disassemble opener disks (1) by removing 5/8-inch bolts (2) and shim washers (3). Save bolts for later reassembly.

**IMPORTANT:** Note how many shim washers are on each side of disks. You will need to place the same number of washers on each side of disks after installing flap and tube.

2. Remove existing seed tube by squeezing hose clamp (4) and pulling seed hose (5) off seed tube. Remove screws (6) and pull existing seed tube out of opener body. Insert new tube and secure with screws. Place seed hose on new tube and secure with hose clamp.
3. Hook seed flap (7) over welded nuts (8). Work clip until it snaps securely over nuts.

**NOTE:** You may need to use a hand grinder to touch up the nut weld. If necessary, remove enough of the weld so the clip snaps below flush with the nut.

4. Orient clip so seed flap is positioned as shown in Figure 2. Rotate clip on welded nut for proper position.
5. Replace disks. Use new shim washers provided in kit, placing the same number of washers on each side of disks as were on disks before disassembly.

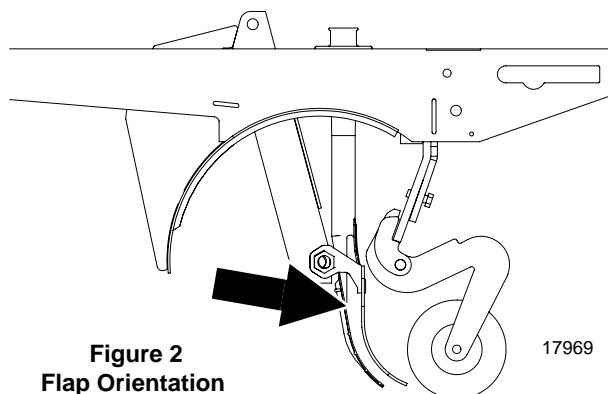


Figure 2  
Flap Orientation

17969

*Listing of Parts*

**122-245K Seed Flap and Tube Kit, Seed Lok**

*Your Kit Includes:*

Qty.	Part No.	Part Description
1	122-248S	SEED FLAP & 12PT CLIP, SEEDLOK
8	804-040C	WASHER MACH 1.19 X 0.63 X 18GA
1	817-314C	OPENER SEED TUBE, PLASTIC