



2600-2S Small Seeds Option

Used with:

- 2600-2S



When you see this symbol, the subsequent instructions and warnings are serious - follow without exception. Your life and the lives of others depend on it!

General Information

These instructions explain how to install the small-seeds attachment. The small-seeds attachment delivers the smallest seeds evenly and gently. The attachment holds 0.24 bushels per foot.

These instructions apply to:

- 133-164A 2600 Small Seeds 6"
- 133-165A 2600 Small Seeds 7 1/2"
- 133-166A 2600 Small Seeds 10"
- 133-167A 2600F Small Seeds 6"
- 133-168A 2600F Small Seeds 7 1/2"
- 133-169A 2600F Small Seeds 10"

Manual Update

Refer to the drill operator's manual for detailed information on operating, adjusting, troubleshooting and maintaining the small-seeds attachment safely. Refer to the parts manual for part identification.

- 2600-2S Drill Operator's Manual 195-200M
- 2600-2S Drill Parts Manual 195-200P

Definitions

Right-hand and left-hand as used in this manual are determined by facing the direction the machine will travel while in use unless otherwise stated.

Assembly Instructions

Box Assembly

Refer to Figure 1

1. Working on the left-hand side of the drill remove handle (1) and warning light (6) from main seed box. Save bolts, nuts, light and handle for later use.
2. Install the left-hand mount and drive (2) on the left side of drill frame (3) using a 1/2" x 1 1/4" bolt, 1/2" lock washer and a 1/2" nut supplied in the kit. It will also be necessary to remove and use the existing bolt.
3. At holes (4), where the handle was removed, fasten top of the left-hand mount and drive (2) to main seed box. Use 1/2" x 1 1/4" bolts and 1/2" locking flange nuts. Leave mounting hardware loose.
4. Install the right-hand mount (8) on the right side of drill frame using a 1/2" x 1 1/4" bolt, 1/2" lock washer and a 1/2" nut supplied in the kit. It will also be necessary to remove and use the existing bolt.
5. At holes (4), where the light was removed, fasten top of the right-hand mount (8) to main seed box. Use 1/2" x 1 1/4" bolts and 1/2" locking flange nuts. Leave mounting hardware loose.
6. Bolt small-seeds box (5) to box mounts. Use 3/8" x 1" bolts, 3/8" lock washers and 3/8" nuts.
7. Attach the warning light (6) and right-hand chain guard (7) to the right mount using bolts removed in step 1.
8. Tighten all hardware.
9. Repeat steps to assemble box on right-hand drill section, mirroring box mounts.

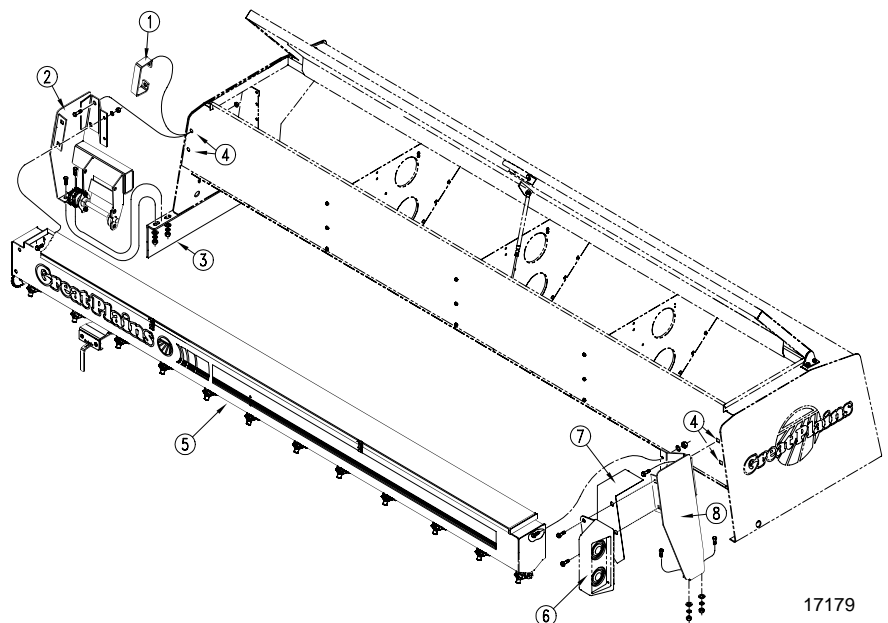


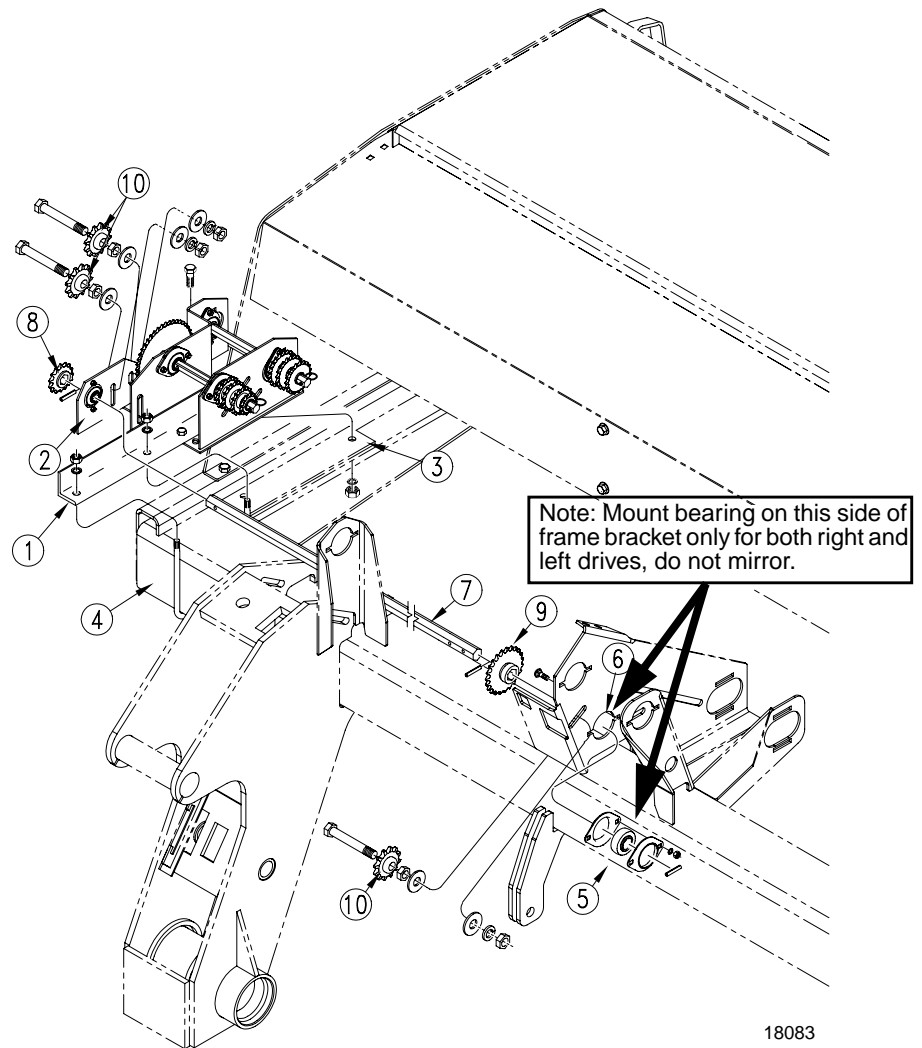
Figure 1
Mounting Box

Assembly

Drive Assembly (for drills with-out fertilizer kits)

Refer to Figure 2

1. Working on the right-hand side of the drill mount angle channel (1) onto right-hand intermediate drive (2) using 1/2" x 1 1/4" bolt, 1/2" lock washers and 1/2" nuts.
2. Mount intermediate drive onto drill frame. Bolt intermediate drive to side frame (3) using 1/2" 1 1/4" bolts, 1/2" lock washers and 1/2" nuts. Fasten the intermediate drive to front frame (4) Using a 1/2" x 6" x 7 1/4" U-bolt, 1/2" lock washers and 1/2" nuts.
3. Mount bearing and flangettes (5) on open shaft support near center of front frame (6), **see note**. Use 5/16" x 1" carriage bolts, 5/16" lock washers and 5/16" nuts to secure flangettes to shaft support. Leave bolts loose.
4. Install new jackshaft (7) through bearings on shaft support and bearings on intermediate drive. As you install shaft, place 14-tooth sprocket (8) and 23-tooth sprocket (9) on shaft. Secure sprockets on shafts with roll pins. When shaft and sprockets are installed and shaft is aligned, tighten bolts on bearing flangettes.
5. Install the three idler sprockets (10) using 1/2" x 3" bolts, 1/2" flat washers, 1/2" lock washers and 1/2" jam nuts.
6. Remove old clutches and replace with the clutches supplied in the kit.
7. Install drive chains and adjust chain tension with the idlers.
8. Repeat steps for left-hand box.



18083

Drive Assembly (for drills with fertilizer kits)

Refer to Figure 2

9. Add 14-tooth sprocket (8) to the end of jackshaft (7) and secure it in place with a roll pin on each side.
10. Install the two idler sprockets (10) using 1/2" x 3" bolts, 1/2" flat washers, 1/2" lock washers and 1/2" jam nuts.
11. Route drive chain and adjust chain tension with the idlers.

For All Drills

Refer to Figure 3

12. Install chain shields (1) over box ends. Install handle (2) using bolts (3) that originally held handle.
13. Repeat steps for left-hand box, using left-hand intermediate drive.

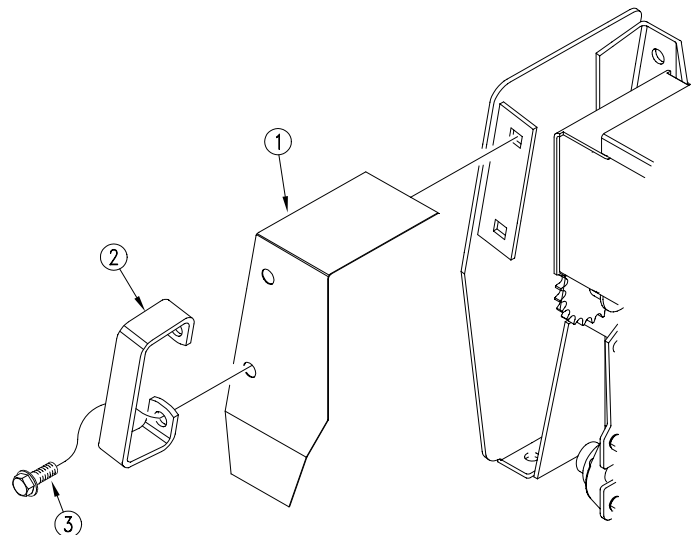


Figure 3
Handle and Guard

Seed Tube Assembly

Note: For drills without a fertilizer kit use seed tube P/N 123-939H and use the following instructions.

Refer to Figure 4

1. Insert the seed tube (1) into the hole on the top of the opener. Add reinforcement ring (7) and secure in place with a number 10-16 x 1/2" screw (2).
2. Slide a hose clamp (4) over the hose (3). Slide the end of the hose over the seed tube and secure it in place with the hose clamp.
3. Slide a hose clamp (4) over the other end of the hose and slide the hose over the seed outlet which corresponds with the appropriate opener. Secure hose in place with the hose clamp. Repeat the above steps to install the rest of the seed tubes and hoses.

Note: For drills with a fertilizer kit use seed tube P/N 133-128H and use the following instructions.

Refer to Figure 4

4. Set the side delivery tube (5) down over the top of the opener directly in front of the fertilizer tube. Line up the holes with the holes in the opener and insert the 3/8" x 3 5/8" bolt and secure bolt with a 3/8" lock nut flange.
5. Slide a hose clamp (4) over the hose (3). Slide the end of the hose over the seed tube and secure it in place with the hose clamp.
6. Slide a hose clamp (4) over the other end of the hose and slide the hose over the seed outlet which corresponds with the appropriate opener. Secure hose in place with the hose clamp. Repeat the above steps to install the rest of the seed tubes and hoses.

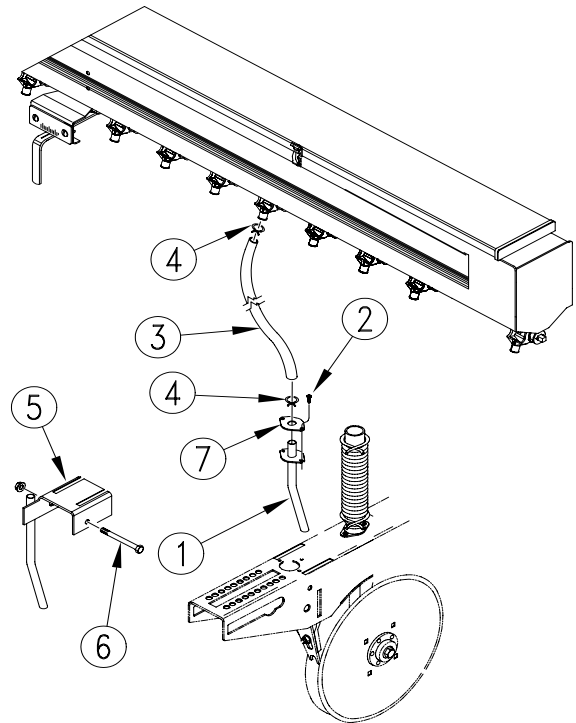


Figure 4
Seed Tube and Hose

20101

Seed Rate Calibration

NOTE: Seeding rates will vary greatly with variations in sizes of the seeds. The seeding rates listed in this manual are based on average seed size. We recommend that you test and adjust your drill using the procedure below to help ensure an accurate seeding rate.

1. Jack up the wing gauge wheels and rotate them to see that the feed cups and drives are working properly and are free from foreign matter. The right wing gauge wheel drives the center section, but the drive does not engage unless the drill is completely unfolded.
2. Set the seed rate adjustment handle to the desired chart setting. Make sure all the feed cup doors are in the desired position.
3. There are many factors which will affect seeding rates: seed treatment, weight of seed, size of seed, surface condition of seed, tire configuration, tire pressure and tire slippage. Minor adjustments will probably be needed to compensate for these factors.
4. The pounds-per-acre in the seed rate charts are based on the drill having 9.5L-15 6 PLY ribbed implement tires inflated to 32 psi. on the wing gauge wheels. Check your tires for proper inflation pressure.
5. The large differences in seed size and treatment can cause a wide variation in actual seeding rates. The seed rate charts on the following pages are based on average size seed. This may differ from the seed you are using. Use the seed rate charts as a guide. Set the pounds per acre desired for your row spacing and complete the following procedure to calibrate the drill for your specific seed.
 - a. Place several pounds of seed over three of the feed cups at the outboard drive end of the drill box.
 - b. Disconnect the seed tubes from these three disk openers.
 - c. Lower the opener frames to planting position in order to activate the clutch and raise the proper drive tire off the ground with a jack so it can be rotated by hand.
 - d. Place a container under the three seed tubes to gather the seed as it is metered.
 - e. Rotate the drive wheel until one acre has been tallied on the acremeter. This will be 203 rotations. Be sure to check the three cups to make sure each cup has plenty of seed coming into it.
 - f. Weigh the seed which has been metered. Divide by three to get the ounces/pounds metered by each feed cup. Multiply by the number of openers on your drill to arrive at the total pounds-per-acre your drill would meter at that setting. If this figure is different than desired, set your feed cup adjustment handle accordingly.

- g. You may want to repeat the calibration procedure if the results of your calibration vary greatly from the suggested settings contained in this manual.

REMEMBER: Tire size, tire air pressure, and field conditions also affect seeding rates. When drilling, check the amount of seed you are using by noting acres drilled, amount of seed added to the drill, and level of seed in each drill box. If you suspect that you are drilling more or less than desired, you may need to adjust the seeding rates slightly to compensate for your field conditions.

Assembly

Small Seeds Attachment

To set and calibrate the seeding rate on the optional small seeds attachment, follow these steps.

Refer to Figure 5

1. Set the seed-rate handle on the small seeds attachment as indicated by the *Small Seeds Rate Chart*, this page. The seed-rate handle for the small seeds attachment is shown.
2. Calibrate the small seeds attachment to your material by following the steps under *Seed Rate Calibration*, on page 4.

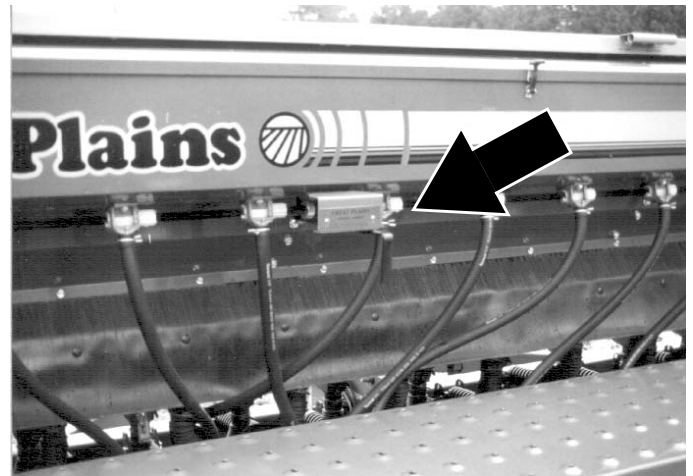


Figure 5
Small Seeds Rate Handle

17050

Small Seeds Rate Chart

Setting Number		5	10	15	20	25	30	35	40	45	50	55	60	65	70	75	80	85	90	95	100	
Kentucky Blue Grass, Fescue, Annual Rye Grass	Row Spacing	6"	0	.2	1.2	1.9	2.7	3.3	4.1	4.6	5.2	5.8	6.3	6.8	7.3	7.8	8.3	8.8	9.2	9.7	10.0	10.5
		7.5"	0	.2	.9	1.5	2.2	2.7	3.3	3.7	4.2	4.6	5.1	5.5	5.9	6.3	6.7	7.0	7.4	7.7	8.1	8.4
		10"	0	.1	.7	1.1	1.6	2.0	2.4	2.7	3.1	3.4	3.7	4.0	4.3	4.6	4.9	5.2	5.4	5.7	5.9	6.2
Ladino Clover, Canary Grass, Timothy, Canola	Row Spacing	6"	0	1.1	2.1	3.3	4.7	6.1	7.6	9.2	10.7	12.2	13.8	15.5	17.0	18.5	20.3	21.7	23.4	25.4	27.3	29.2
		7.5"	0	.9	1.6	2.6	3.9	4.9	6.1	7.4	8.6	9.8	11.1	12.5	13.7	14.9	16.3	17.6	18.8	20.4	21.9	23.5
		10"	0	.6	1.5	1.9	2.5	3.6	4.5	5.4	6.3	7.2	8.1	9.1	10.0	10.9	12.0	12.9	13.8	14.9	16.1	17.2
Bermuda, Red Top, Unhulled Lespedeza, Sericia, Sand & Weeping Love Grass	Row Spacing	6"	0	.7	1.1	1.7	2.6	3.3	4.1	5.0	5.9	6.6	7.2	7.8	8.4	9.0	9.5	10.2	10.9	11.6	12.2	12.9
		7.5"	0	.5	.9	1.4	2.1	2.6	3.3	4.0	4.7	5.3	5.8	6.3	6.7	7.2	7.6	8.2	8.8	9.3	9.8	10.4
		10"	0	.4	.6	1.0	1.5	1.9	2.4	3.0	3.5	3.9	4.2	4.6	4.9	5.3	5.6	6.0	6.4	6.8	7.2	7.6
Red & Sweet Clover, Lespedeza Hulled	Row Spacing	6"	0	1.5	3.4	5.2	7.1	9.0	11.3	13.2	15.3	17.0	19.0	20.8	22.5	24.5	26.4	28.3	30.1	32.1	33.8	35.6
		7.5"	0	1.2	2.7	4.2	5.7	7.2	9.1	10.6	12.3	13.7	15.3	16.7	18.1	19.7	21.2	22.7	24.2	25.8	27.2	28.6
		10"	0	.9	2.0	3.1	4.2	5.3	6.7	7.8	9.0	10.0	11.2	12.2	13.3	14.4	15.6	16.6	17.8	18.9	19.9	20.9
Bird's-foot Trefoil, Sudan	Row Spacing	6"	0	1.7	3.3	5.2	6.8	8.7	10.7	12.7	14.7	16.8	19.2	21.2	23.4	25.6	28.0	29.9	32.1	34.2	36.3	38.4
		7.5"	0	1.4	2.6	4.2	5.4	7.0	8.6	10.2	11.9	13.5	15.4	17.0	18.8	20.5	22.5	24.0	25.8	27.6	29.1	30.9
		10"	0	1.0	1.9	3.1	4.0	5.1	6.3	7.5	8.6	9.9	11.3	12.5	13.8	15.1	16.5	17.6	18.9	20.2	21.4	22.7
Orchard Grass	Row Spacing	6"	0	0	.3	.7	.9	1.3	1.5	2.0	2.4	2.8	3.3	3.5	3.9	4.4	4.8	5.0	5.5	5.7	6.1	6.3
		7.5"	0	0	.2	.5	.7	1.1	1.2	1.6	1.9	2.3	2.6	2.8	3.2	3.5	3.9	4.0	4.4	4.6	4.9	5.1
		10"	0	0	.1	.4	.5	.8	.9	1.2	1.4	1.7	1.9	2.1	2.3	2.6	2.8	3.0	3.2	3.3	3.6	3.7
Millet, Reed Canary	Row Spacing	6"	.4	1.4	2.4	3.5	4.4	5.5	6.5	7.5	8.5	9.5	10.5	11.5	12.5	13.6	14.6	15.6	16.6	17.6	18.5	19.0
		7.5"	.3	1.2	2.0	2.8	3.6	4.4	5.2	6.0	6.8	7.6	8.4	9.3	10.1	10.9	11.7	12.5	13.3	14.1	14.9	15.1
		10"	.3	.8	1.4	2.0	2.6	3.2	3.8	4.4	5.0	5.6	6.2	6.8	7.4	8.0	8.6	9.2	9.8	10.4	10.9	11.5
Alfalfa, Red Alsike, Crimson Clover	Row Spacing	6"	0	2.2	3.5	4.8	6.0	7.5	8.7	9.8	11.2	12.5	13.8	15.1	16.4	17.5	18.6	20.2	21.4	22.9	24.0	25.2
		7.5"	0	1.8	2.8	3.9	4.8	6.0	7.0	7.9	9.0	10.0	11.1	12.1	13.2	14.0	15.3	16.2	17.2	18.3	19.3	20.3
		10"	0	1.3	2.1	2.8	3.5	4.4	5.1	5.8	6.6	7.4	8.1	8.9	9.7	10.3	11.2	11.9	12.6	13.4	14.2	14.9

Listing of Parts

133-164A 2600 Small Seeds 6"

Qty.	Part No.	Part Description
2	123-491D	HANDLE MOUNT LH CHAIN GAURD
2	123-492D	HANDLE MOUNT RH CHAIN GUARD
52	123-939H	SMALL SEEDS TUBE WELDMENT
1	133-152K	2600 SML SDS LH BOX ASY 6 IN
1	133-153K	2600 SML SDS RH BOX ASY 6 IN
1	133-158H	SML SDS LH MOUNT WLDM
1	133-160H	SML SDS RH MOUNT WLDM
1	133-162K	2600 SMLSDS LH MOUNT&DRIVE ASY
1	133-163K	2600 SMLSDS RH MOUNT&DRIVE ASY
1	133-170M	MANUAL 2600 SMALL SDS INSTALL
2	136-064D	CHAIN RL #40 51 PITCHES
2	136-104D	CHAIN RL #40 62 PITCHES
2	136-183D	CHAIN RL #40 203 PITCHES
1	195-145H	FERTILIZER DRIVE WELDMENT LH
1	195-186K	3S-3000F RH WING CLUTCH ASSY
1	195-187K	3S-3000F LH WING CLUTCH ASSY
2	195-212D	ANGLE, FERTILIZER DRIVE MOUNT
2	195-241D	AUXILIRY POWER HEX 7/8
1	195-250H	FERTILIZER DRIVE WELDMENT RH
104	800-321C	HOSE CLAMP NO.12 3/4 ID
104	801-002C	SCREW HEX SLT10-16 X 1/2P.TH D CT
20	802-034C	HHCS 1/2-13X1 1/4 GR5
6	802-041C	HHCS 1/2-13X3 1/2 GR5
8	802-282C	RHSNB 5/16-18X1 GR5
8	802-388C	HFS 3/8-16X1 GR5
8	803-008C	NUT HEX 5/16-18 PLT
8	803-014C	NUT HEX 3/8-16 PLT
16	803-020C	NUT HEX 1/2-13 PLT
12	803-036C	NUT HEX JAM 1/2-13 PLT
8	804-009C	WASHER LOCK SPRING 5/16 PLT
8	804-013C	WASHER LOCK SPRING 3/8 PLT
22	804-015C	WASHER LOCK SPRING 1/2 PLT
12	804-113C	WASHER FLAT 1/2 USS HARD PLT
8	805-180C	PIN ROLL 1/4 X 1 1/2 LG PLT
2	806-060C	U-BOLT 1/2-13 X 6 1/32 X 7 1/4
2	808-256C	SPKT 40B23 X 7/8 HEX BORE
2	808-259C	SPKT 40B14 X 7/8 HEX BORE
52	816-358C	SGS HOSE 122 RIBS
6	817-025C	NO. 40 12T IDLER SPKT.
8	822-032C	FLANGETTE 52 MST
4	822-119C	BRG.7/8HEX BR 52MM SPHRICAL OD
2	838-160C	DECAL 3 COLOR STRIPE 2.50 WIDE
1	838-161C	DECAL LOGO&GP F/STRIPE 4 X 24
1	838-197C	DECAL 2S-2600
1	838-467C	DECAL SMALL SEEDS DANGER

Listing of Parts

133-165A 2600 Small Seeds 7 1/2"

Qty.	Part No.	Part Description
2	123-491D	HANDLE MOUNT LH CHAIN GAURD
2	123-492D	HANDLE MOUNT RH CHAIN GUARD
42	123-939H	SMALL SEEDS TUBE WELDMENT
1	133-154K	2600 SML SDS LH BOX ASY 7.5 IN
1	133-155K	2600 SML SDS RH BOX ASY 7.5 IN
1	133-158H	SML SDS LH MOUNT WLDM
1	133-160H	SML SDS RH MOUNT WLDM
1	133-162K	2600 SMLSDS LH MOUNT&DRIVE ASY
1	133-163K	2600 SMLSDS RH MOUNT&DRIVE ASY
1	133-170M	MANUAL 2600 SMALL SDS INSTALL
2	136-064D	CHAIN RL #40 51 PITCHES
2	136-104D	CHAIN RL #40 62 PITCHES
2	136-183D	CHAIN RL #40 203 PITCHES
1	195-145H	FERTILIZER DRIVE WELDMENT LH
1	195-186K	3S-3000F RH WING CLUTCH ASSY
1	195-187K	3S-3000F LH WING CLUTCH ASSY
2	195-212D	ANGLE, FERTILIZER DRIVE MOUNT
2	195-241D	AUXILIRY POWER HEX 7/8
1	195-250H	FERTILIZER DRIVE WELDMENT RH
84	800-321C	HOSE CLAMP NO.12 3/4 ID
84	801-002C	SCREW HEX SLT10-16 X 1/2P.THD CT
20	802-034C	HHCS 1/2-13X1 1/4 GR5
6	802-041C	HHCS 1/2-13X3 1/2 GR5
8	802-282C	RHSNB 5/16-18X1 GR5
8	802-388C	HFS 3/8-16X1 GR5
8	803-008C	NUT HEX 5/16-18 PLT
8	803-014C	NUT HEX 3/8-16 PLT
16	803-020C	NUT HEX 1/2-13 PLT
12	803-036C	NUT HEX JAM 1/2-13 PLT
8	804-009C	WASHER LOCK SPRING 5/16 PLT
8	804-013C	WASHER LOCK SPRING 3/8 PLT
22	804-015C	WASHER LOCK SPRING 1/2 PLT
12	804-113C	WASHER FLAT 1/2 USS HARD PLT
8	805-180C	PIN ROLL 1/4 X 1 1/2 LG PLT
2	806-060C	U-BOLT 1/2-13 X 6 1/32 X 7 1/4
2	808-256C	SPKT 40B23 X 7/8 HEX BORE
2	808-259C	SPKT 40B14 X 7/8 HEX BORE
42	816-358C	SGS HOSE 122 RIBS
6	817-025C	NO. 40 12T IDLER SPKT.
8	822-032C	FLANGETTE 52 MST
4	822-119C	BRG.7/8HEX BR 52MM SPHRICAL OD
2	838-160C	DECAL 3 COLOR STRIPE 2.50 WIDE
1	838-161C	DECAL LOGO&GP F/STRIPE 4 X 24
1	838-197C	DECAL 2S-2600
1	838-467C	DECAL SMALL SEEDS DANGER

Listing of Parts

133-166A 2600 Small Seeds 10"

Qty.	Part No.	Part Description
2	123-491D	HANDLE MOUNT LH CHAIN GAURD
2	123-492D	HANDLE MOUNT RH CHAIN GUARD
32	123-939H	SMALL SEEDS TUBE WELDMENT
1	133-156K	2600 SML SDS LH BOX ASY 10 IN
1	133-157K	2600 SML SDS RH BOX ASY 10 IN
1	133-158H	SML SDS LH MOUNT WLDM
1	133-160H	SML SDS RH MOUNT WLDM
1	133-162K	2600 SMLSDS LH MOUNT&DRIVE ASY
1	133-163K	2600 SMLSDS RH MOUNT&DRIVE ASY
1	133-170M	MANUAL 2600 SMALL SDS INSTALL
2	136-064D	CHAIN RL #40 51 PITCHES
2	136-104D	CHAIN RL #40 62 PITCHES
2	136-183D	CHAIN RL #40 203 PITCHES
1	195-145H	FERTILIZER DRIVE WELDMENT LH
1	195-186K	3S-3000F RH WING CLUTCH ASSY
1	195-187K	3S-3000F LH WING CLUTCH ASSY
2	195-212D	ANGLE, FERTILIZER DRIVE MOUNT
2	195-241D	AUXILIRY POWER HEX 7/8
1	195-250H	FERTILIZER DRIVE WELDMENT RH
64	800-321C	HOSE CLAMP NO.12 3/4 ID
64	801-002C	SCREW HEX SLT10-16 X 1/2P.THDCT
20	802-034C	HHCS 1/2-13X1 1/4 GR5
6	802-041C	HHCS 1/2-13X3 1/2 GR5
8	802-282C	RHSNB 5/16-18X1 GR5
8	802-388C	HFS 3/8-16X1 GR5
8	803-008C	NUT HEX 5/16-18 PLT
8	803-014C	NUT HEX 3/8-16 PLT
16	803-020C	NUT HEX 1/2-13 PLT
12	803-036C	NUT HEX JAM 1/2-13 PLT
8	804-009C	WASHER LOCK SPRING 5/16 PLT
8	804-013C	WASHER LOCK SPRING 3/8 PLT
22	804-015C	WASHER LOCK SPRING 1/2 PLT
12	804-113C	WASHER FLAT 1/2 USS HARD PLT
8	805-180C	PIN ROLL 1/4 X 1 1/2 LG PLT
2	806-060C	U-BOLT 1/2-13 X 6 1/32 X 7 1/4
2	808-256C	SPKT 40B23 X 7/8 HEX BORE
2	808-259C	SPKT 40B14 X 7/8 HEX BORE
32	816-358C	SGS HOSE 122 RIBS
6	817-025C	NO. 40 12T IDLER SPKT.
8	822-032C	FLANGETTE 52 MST
4	822-119C	BRG.7/8HEX BR 52MM SPHRICAL OD
2	838-160C	DECAL 3 COLOR STRIPE 2.50 WIDE
1	838-161C	DECAL LOGO&GP F/STRIPE 4 X 24
1	838-197C	DECAL 2S-2600
1	838-467C	DECAL SMALL SEEDS DANGER

Listing of Parts

133-167A 2600F Small Seeds 6"

Qty.	Part No.	Part Description
2	123-491D	HANDLE MOUNT LH CHAIN GAURD
2	123-492D	HANDLE MOUNT RH CHAIN GUARD
52	133-128H	SGS SIDE DELIVERY TUBE
1	133-152K	2600 SML SDS LH BOX ASY 6 IN
1	133-153K	2600 SML SDS RH BOX ASY 6 IN
1	133-158H	SML SDS LH MOUNT WLDM
1	133-160H	SML SDS RH MOUNT WLDM
1	133-162K	2600 SMLSDS LH MOUNT&DRIVE ASY
1	133-163K	2600 SMLSDS RH MOUNT&DRIVE ASY
1	133-170M	MANUAL 2600 SMALL SDS INSTALL
2	136-104D	CHAIN RL #40 62 PITCHES
2	136-183D	CHAIN RL #40 203 PITCHES
104	800-321C	HOSE CLAMP NO.12 3/4 ID
12	802-034C	HHCS 1/2-13X1 1/4 GR5
4	802-041C	HHCS 1/2-13X3 1/2 GR5
8	802-388C	HFS 3/8-16X1 GR5
52	802-427C	HFS 3/8-16 x 3 5/8 GR5
60	803-014C	NUT HEX 3/8-16 PLT
4	803-020C	NUT HEX 1/2-13 PLT
8	803-036C	NUT HEX JAM 1/2-13 PLT
52	803-209C	LOCK NUT FLANGE 3/8-16 PLT
112	804-013C	WASHER LOCK SPRING 3/8 PLT
8	804-015C	WASHER LOCK SPRING 1/2 PLT
8	804-113C	WASHER FLAT 1/2 USS HARD PLT
4	805-180C	PIN ROLL 1/4 X 1 1/2 LG PLT
2	808-259C	SPKT 40B14 X 7/8 HEX BORE
52	816-358C	SGS HOSE 122 RIBS
4	817-025C	NO. 40 12T IDLER SPKT.
23	838-160C	DECAL 3 COLOR STRIPE 2.50 WIDE
1	838-161C	DECAL LOGO&GP F/STRIPE 4 X 24
1	838-197C	DECAL 2S-2600
1	838-467C	DECAL SMALL SEEDS DANGER

Listing of Parts

133-168A 2600F Small Seeds 7 1/2"

Qty.	Part No.	Part Description
2	123-491D	HANDLE MOUNT LH CHAIN GAURD
2	123-492D	HANDLE MOUNT RH CHAIN GUARD
42	133-128H	SGS SIDE DELIVERY TUBE
1	133-154K	2600 SML SDS LH BOX ASY 7.5 IN
1	133-155K	2600 SML SDS RH BOX ASY 7.5 IN
1	133-158H	SML SDS LH MOUNT WLDM
1	133-160H	SML SDS RH MOUNT WLDM
1	133-162K	2600 SMLSDS LH MOUNT&DRIVE ASY
1	133-163K	2600 SMLSDS RH MOUNT&DRIVE ASY
1	133-170M	MANUAL 2600 SMALL SDS INSTALL
2	136-104D	CHAIN RL #40 62 PITCHES
2	136-183D	CHAIN RL #40 203 PITCHES
84	800-321C	HOSE CLAMP NO.12 3/4 ID
12	802-034C	HHCS 1/2-13X1 1/4 GR5
4	802-041C	HHCS 1/2-13X3 1/2 GR5
8	802-388C	HFS 3/8-16X1 GR5
42	802-427C	HFS 3/8-16 X 3 5/8 GR5
50	803-014C	NUT HEX 3/8-16 PLT
4	803-020C	NUT HEX 1/2-13 PLT
8	803-036C	NUT HEX JAM 1/2-13 PLT
42	803-209C	LOCK NUT FLANGE 3/8-16 PLT
92	804-013C	WASHER LOCK SPRING 3/8 PLT
8	804-015C	WASHER LOCK SPRING 1/2 PLT
8	804-113C	WASHER FLAT 1/2 USS HARD PLT
4	805-180C	PIN ROLL 1/4 X 1 1/2 LG PLT
2	808-259C	SPKT 40B14 X 7/8 HEX BORE
42	816-358C	SGS HOSE 122 RIBS
4	817-025C	NO. 40 12T IDLER SPKT.
23	838-160C	DECAL 3 COLOR STRIPE 2.50 WIDE
1	838-161C	DECAL LOGO&GP F/STRIPE 4 X 24
1	838-197C	DECAL 2S-2600
1	838-467C	DECAL SMALL SEEDS DANGER

Listing of Parts

133-169A 2600F Small Seeds 10"

Qty.	Part No.	Part Description
2	123-491D	HANDLE MOUNT LH CHAIN GAURD
2	123-492D	HANDLE MOUNT RH CHAIN GUARD
32	133-128H	SGS SIDE DELIVERY TUBE
1	133-156K	2600 SML SDS LH BOX ASY 10 IN
1	133-157K	2600 SML SDS RH BOX ASY 10 IN
1	133-158H	SML SDS LH MOUNT WLDM
1	133-160H	SML SDS RH MOUNT WLDM
1	133-162K	2600 SMLSDS LH MOUNT&DRIVE ASY
1	133-163K	2600 SMLSDS RH MOUNT&DRIVE ASY
1	133-170M	MANUAL 2600 SMALL SDS INSTALL
2	136-104D	CHAIN RL #40 62 PITCHES
2	136-183D	CHAIN RL #40 203 PITCHES
64	800-321C	HOSE CLAMP NO.12 3/4 ID
12	802-034C	HHCS 1/2-13X1 1/4 GR5
4	802-041C	HHCS 1/2-13X3 1/2 GR5
8	802-388C	HFS 3/8-16X1 GR5
32	802-427C	HFS 3/8-16 X 3 5/8 GR5
40	803-014C	NUT HEX 3/8-16 PLT
4	803-020C	NUT HEX 1/2-13 PLT
8	803-036C	NUT HEX JAM 1/2-13 PLT
32	803-209C	LOCK NUT FLANGE 3/8-16 PLT
72	804-013C	WASHER LOCK SPRING 3/8 PLT
8	804-015C	WASHER LOCK SPRING 1/2 PLT
8	804-113C	WASHER FLAT 1/2 USS HARD PLT
4	805-180C	PIN ROLL 1/4 X 1 1/2 LG PLT
2	808-259C	SPKT 40B14 X 7/8 HEX BORE
32	816-358C	SGS HOSE 122 RIBS
4	817-025C	NO. 40 12T IDLER SPKT.
23	838-160C	DECAL 3 COLOR STRIPE 2.50 WIDE
1	838-161C	DECAL LOGO&GP F/STRIPE 4 X 24
1	838-197C	DECAL 2S-2600
1	838-467C	DECAL SMALL SEEDS DANGER