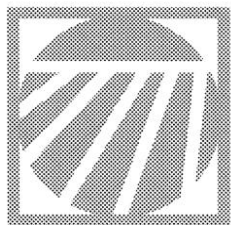


# Installation Instructions



## NTA 1000 and NTA 1300 Brake Option

### Used with:

- NTA 1000 and NTA 1300
- 



*When you see this symbol, the subsequent instructions and warnings are serious - follow without exception. Your life and the lives of others depend on it!*

## General Information

These instructions explain how to install the brake option on your NTA 1000/1300 drill.

These instructions apply to:

- 148-539A NTA 1000 & NTA 1300 Brake Option

## Manual Update

Refer to the drill operator's manual for detailed information on operating, adjusting, troubleshooting and maintaining the small-seeds attachment safely. Refer to the parts manual for part identification.

- NTA 1000 and NTA 1300 Operator's Manual . . . . .148-528M
- NTA 1000 and NTA 1300 Parts Manual . . . . . 148-528P

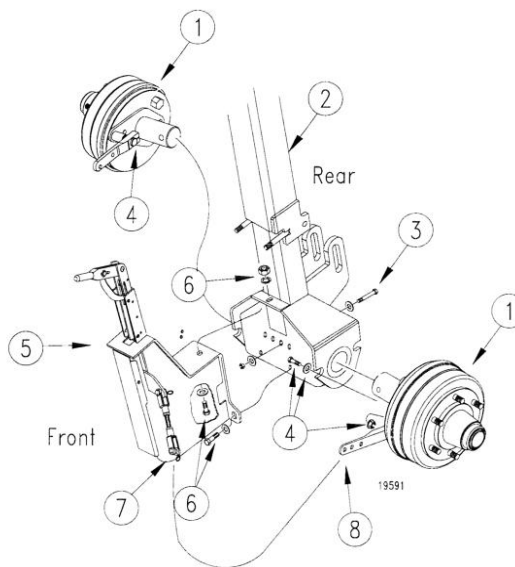
## Definitions

Right-hand and left-hand as used in this manual are determined by facing the direction the machine will travel while in use unless otherwise stated. Left-hand and right-hand sides are assembled in the same manner.

## Assembly Instructions

Refer to Figure 1.

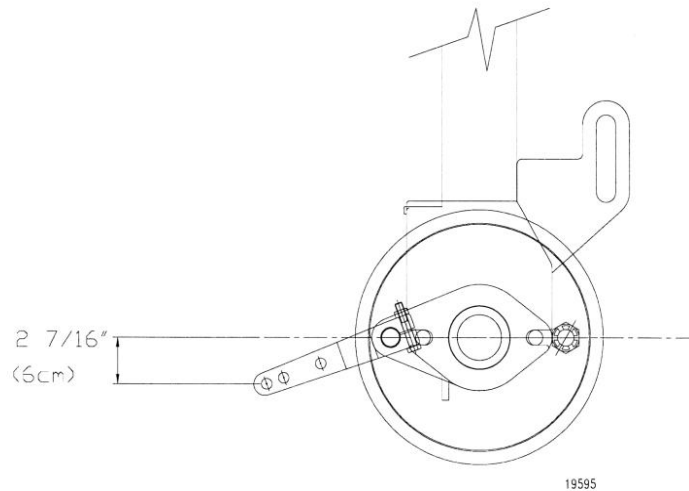
1. Slide hubs (1) into telescoping tube (2). Use existing 5/8 x 5 bolts and fasteners (3) and 3/4 x 1 3/4 bolts, hardend flat washer and lock nuts (4) included in brake kit to retain hub in place. Secure to the slots in the tube with the direction of the bolt being from the tube to the hub. Be sure brake lever is towards the front of the drill.



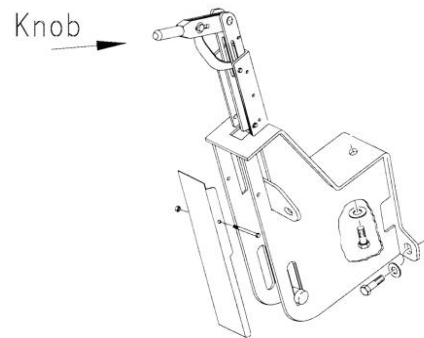
**Figure 1**  
**Brake-Hub Assembly**

Refer to Figure 2

2. Index brake lever so that the end hole is approximately 2 7/16" (6cm) below the center of the hub.
3. Assemble the brake mount assembly (5) to the tube using three 1/2-13 x 1 1/2 bolt, flat washers, lock washer and hex nut (6). See figure 1 page 1.
4. Pin the lower clevis of the tie rod (7) to the outer hole of the brake lever (8).



**Figure 2**  
**Alignment of Brake Lever**



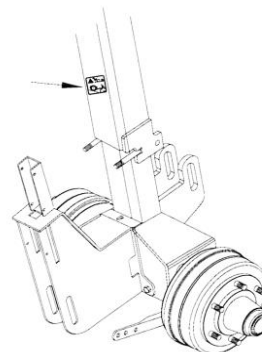
**Figure 3**  
**Control Lever**

Refer to Figure 3

5. Preload of the brakes is accomplished by shortening the tie rods on the side of the brake mount. They must be kept at a equal length to function properly.
6. Secondary adjustments can be made to the brake by turning the knob on the end of the brake assembly mount. If you turn it clockwise, you will be tightening the brake. If you turn the knob counter-clockwise, it will loosen.

Decal Placement:

7. Decal Pic-Brake. Place decals on each side of drill on the front side of the telescoping tube.

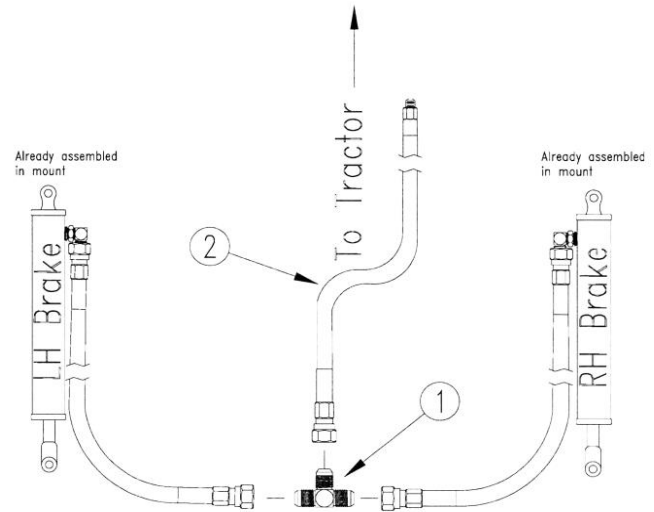


**Brake Decal**

## Brake Hydraulics

Refer to Figure 4

1. Route the hydraulic hoses from the brake mounts along the frame to the center of the drill. Install a 9/16MJIC TE fitting (1) to the hose. Connect a 1/4R1 212 3/8MNPT 9/16FJIC hydraulic hose (2) to the TE fitting and route through the tongue to the tractor.

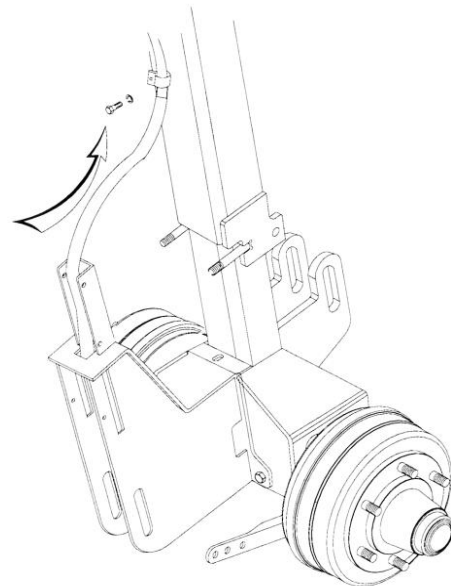


19594

**Figure 4**  
**Hydraulics**

Refer to Figure 5

2. With drill fully raised, install the split hose guard over the 1/4 R1 095 9/16FJIC hydraulic hose along with the "P" clamp and secure to the weld nuts on the front of the H-frame with 5/16 x 1/2 lg bolts and lock washers.



**Figure 5**  
**Clamp for Hose**

## NTA 1000 and NTA 1300 Brake Option

Your Option includes:

<u>Qty</u>	<u>Part Number</u>	<u>Description</u>
1	148-573H	NTA1000-1300 BRAKE MNT WLMT
1	248-112D	NTA1300-1000 BRK EQUALIZER PL
1	148-574H	NTA1000-1300 BRAKE PULL BAR
1	248-111D	NTA1300-1000 BRK CYL MNT COVER
1	890-760C	CABLE CONTROL LEVER
2	810-439C	BRK CYL W/ INTERNAL RET SPRING
4	121-166D	ADJ. YOKE END
4	803-036C	NUT HEX JAM 1/2-13 PLT
2	248-115D	NTA1300-1000 PK BRK CLEVIS BLT
4	805-127C	PIN CLEVIS 1/2 X 1 3/4
6	805-109C	PIN COTTER 1/8 X 1 1/4 PLT
1	805-318C	PIN CLEVIS 3/4 X 2 49/64 USBL
2	804-025C	WASHER FLAT 3/4 SAE PLT
1	805-317C	PIN CLEVIS 5/16 X 29/32 USABLE
1	805-067C	PIN COTTER 1/8 X 3/4
1	805-315C	PIN CLEVIS 9/16 X 1 17/64 USBL
2	802-013C	HHCS 5/16-18X1 3/4 GR5
2	803-011C	NUT LOCK 5/16-18 PLT
3	802-091C	HHCS 1/2-13X1 1/2 GR5
6	804-017C	WASHER FLAT 1/2 USS PLT
3	804-015C	WASHER LOCK SPRING 1/2 PLT
3	803-020C	NUT HEX 1/2-13 PLT
1	802-308C	HHCS 1/4-20X3 1/4 GR5
1	803-255C	NUT HEX NYLOCK 1/4-20
4	815-134C	3000 KG BRAKE-HUB ASSY
1	817-260C	PLUG CAP 2 X 1/4
2	811-119C	EL 3/8MNPT 9/16MJIC
2	811-230C	HH1/4R1 095 9/16FJIC
1	811-451C	HH1/4R1 212 3/8MNPT 9/16FJIC
1	811-312C	TE 9/16MJIC
2	810-439C	BRK CYL W/ INTERNAL RET SPRING
2	113-370D	1/4 MARKDER HYD HOSE GUARD
8	804-093C	WASHER 3/4 HARDENED STEEL
1	148-575M	MANUAL NTA1000-13000 BRAKE
2	800-252C	HYDRAULIC HOSE CLAMP .500
8	802-392C	HHCS 3/4-10X1 3/4 GR5
2	802-630C	HHCS 5/16-18X1/2 GR5
8	803-181C	NUT HEX FLANGE LOCK 3/4-10
2	804-009C	WASHER LOCK SPRING 5/16 PLT
8	804-093C	WASHER 3/4 HARDENED STEEL
2	838-394C	DECAL PIC--BRAKE ROLLING

*NOTES:*