

## Update Instructions



## 30' 3-Section Drill Replacement Gearbox

Used with:

- 30' 3-Section Drill



*When you see this symbol, the subsequent instructions and warnings are serious - follow without exception. Your life and the lives of others depend on it!*

## General Information

These instructions explain how to install the replacement gearbox. The gearbox replaces factory gearboxes on 30' 3-section drills built in 1995 and earlier.

These instructions apply to:

195-226A	30 3SEC GEARBOX REPLACEMENT LH
195-227A	30 3SEC GEARBOX REPLACEMENT CTR
195-228A	30 3SEC GEARBOX REPLACEMENT RH

## Assembly Instructions

The following instructions and illustrations are for the right-hand drive. If installing gearbox on left-hand drive, follow these instructions, remembering that your parts will mirror the illustrations.

NOTE: Some parts are not shown for clarity in the following illustrations.

Refer to Figure 1.

1. Remove chain (1) from gearbox to seed-cup sprocket. Save chain for later reinstallation.
2. Remove and discard bolts (2) holding gearbox (3) on gearbox shelf (4). Remove and discard gearbox and gearbox cover (5). Save existing brass tag (6) and hardware (7) from gearbox cover.

NOTE: Save handle from center gearbox drive.

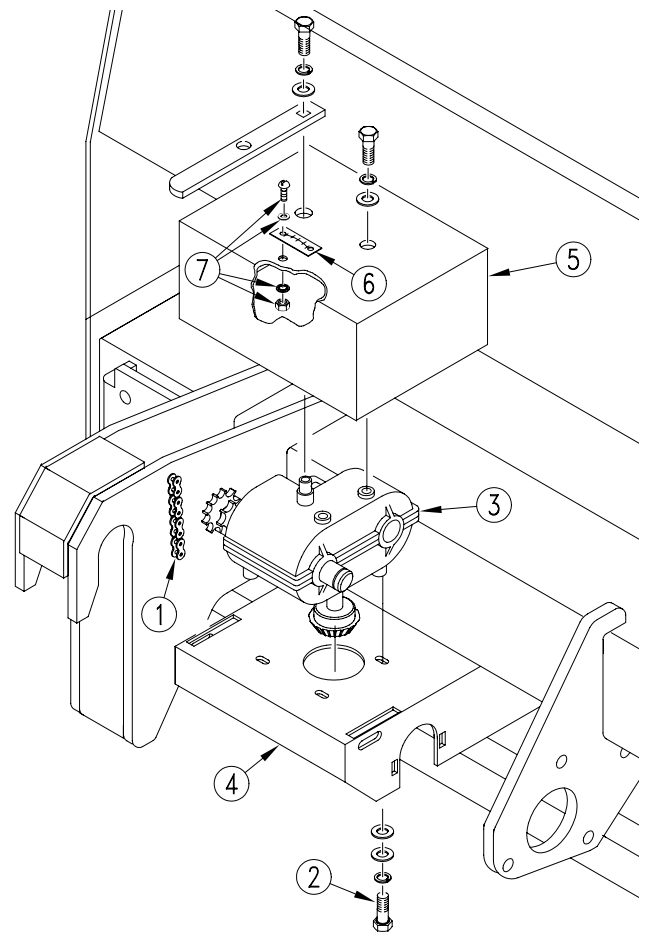


Figure 1

18376

## 2 | Replacement Gearbox

Refer to Figure 2.

3. Disconnect clutch (8) and remove from bracket.

NOTE: This Replacement Gearbox kit will work with either the wrap spring clutch or the jaw clutch.

4. Remove bolts from bearing flanges (9) on gearbox jackshaft (10).
5. Remove jackshaft and disassemble bevel gear (11) and set collar (12) from jackshaft. Discard bevel gear and set collar.
6. Replace bevel gear with 16-tooth sprocket (13) from kit using key (14) from preexisting bevel gear. Do not tighten set screws on sprocket at this time.
7. Reinstall jackshaft and reconnect clutch.

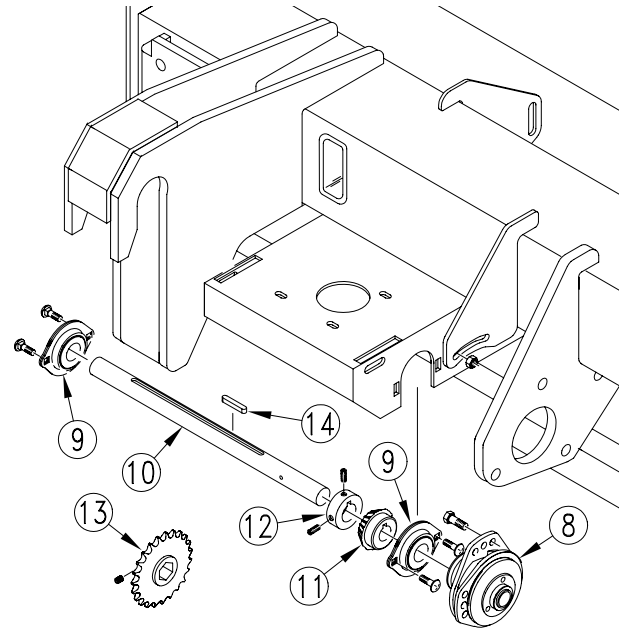


Figure 2

18377

Refer to Figure 3

8. Using four 3/8-inch, self-tapping screws and lock washers (15), bolt new gearbox (16) onto mounting plate (17).
9. Mount 16-tooth, spline-bore sprocket (18) on gearbox input shaft above idler bracket. Mount 12-tooth, spline-bore sprocket (19) on gearbox output shaft. Secure sprockets with snap rings.
10. Mount 12-tooth sprocket (20) on idler bracket in this order: 1/2-inch bolt, sprocket, jam nut, flat washer, bracket, lock washer, and nut.
11. Torch a rectangular access hole (21) in existing gearbox shelf. To locate access hole, hold new gearbox and mounting plate over gearbox shelf. Align gearbox output sprocket (19) with seed-cup sprocket. Mark idler bracket location.
12. Use mounting spacers (22) and 3/8 x 1 1/2 inch bolts (23) to bolt mounting plate and gearbox on gearbox shelf.
13. Align drive sprocket on jackshaft with gearbox input sprocket (18). Tighten set screws on drive sprocket

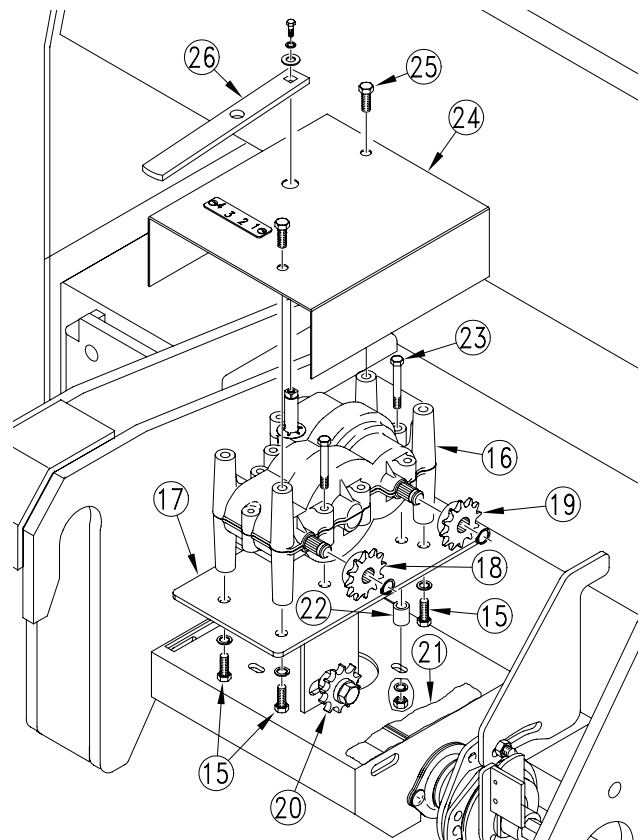


Figure 3

18378

14. Route chain provided in kit over jackshaft drive sprocket and gearbox input sprocket (18). Use new idler (20) to remove chain slack. Refer to Figure 5 for chain routing.

NOTE: You may need to remove links from the chain.

15. Reroute chain removed in step 1 over gearbox output sprocket (19) and seed-cup sprocket. Refer to Figure 5 for chain routing.

If your drill is equipped with idlers mounted behind the frame tube, route chain around idlers and tighten to remove slack.

If your drill is not equipped with idlers mounted behind the frame tube, go to step 17 on page 4 to install idler mount plate shown in Figure 4.

16. Refer to Figure 3 and assemble new gearbox cover (24) on gearbox using two 3/8-inch, self-tapping screws (25).

17. Assemble gearbox handle (26) onto gearbox with 1/4-inch bolt, lock washer and flat washer.

NOTE: On center box frame use existing gearbox handle.

18. Attach brass tags removed in step 2 to new gearbox covers.

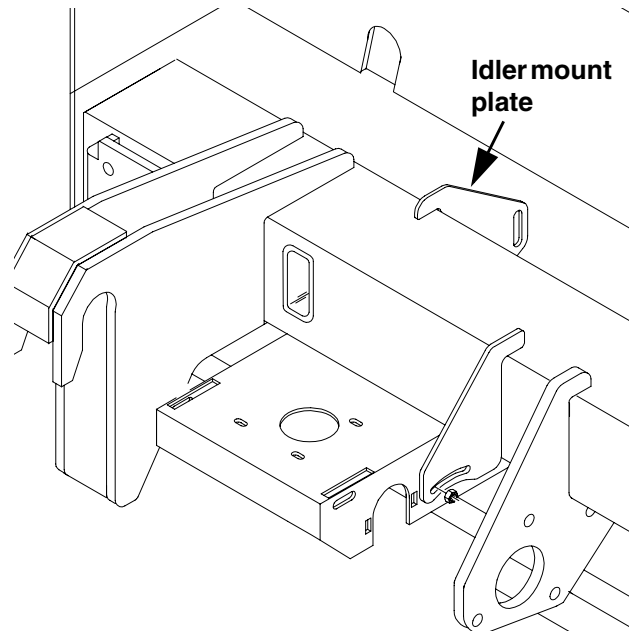


Figure 4

18380

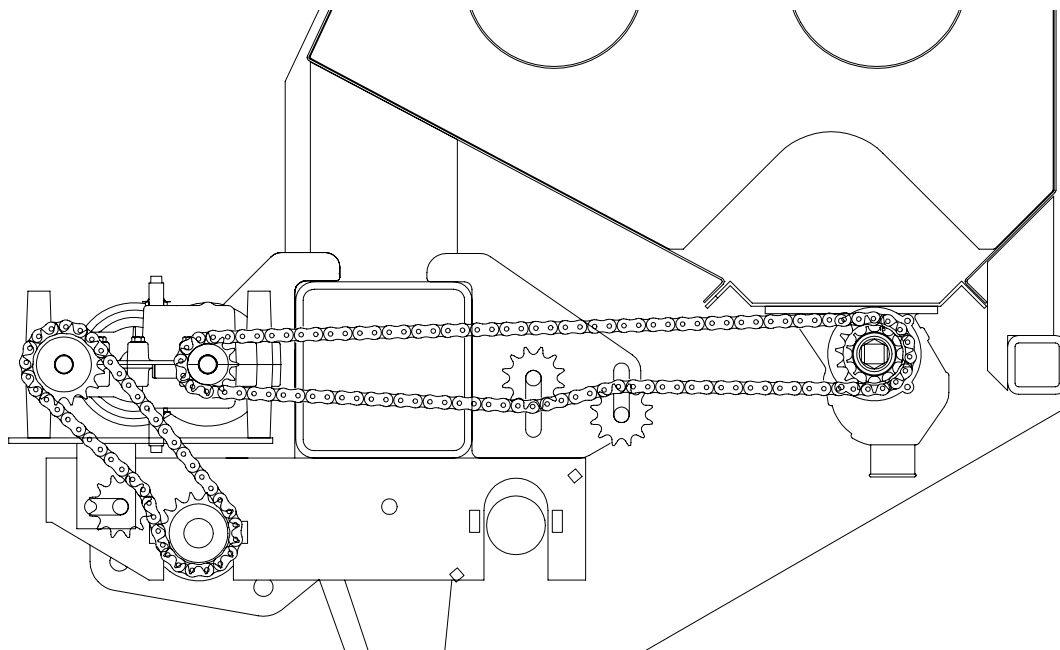


Figure 5  
Chain Routings

18399

## 4 | Replacement Gearbox

---

Refer to Figure 6.

19. Weld the idler mount plate to the frame tube using the dimensions shown as a guide.
20. In each slot on idler mount plate, attach a 12-tooth sprocket in this order: 1/2-inch bolt, sprocket, jam nut, flat washer, idler mount plate, lock washer, and nut.
21. Route chain around idlers and tighten to remove slack. Refer to Figure 5 on the previous page for chain routing.
22. Go back to step 16 on page 3 and continue with gearbox assembly instructions.

## 195-226A 30' 3-Section Gearbox Replacement-LH

Your kit includes:

Qty.	Part No.	Part Description
1	120-237D	GEARBOX SHIFT HANDLE
1	136-072D	CHAIN RL #40 47 PITCHES
1	195-068D	IDLER MOUNT PLATE
1	195-229H	LH GEARBOX MOUNT
3	195-253D	1/2" MOUNT SPACER
1	197-240D	GEAR BOX COVER RH
2	800-141C	SNAP RING EXT F/PEERLESS G.B.
2	801-001C	SCREW RD HD 8-32 X 3/8 BRASS
6	801-076C	SCR SELF TAPPING 3/8X1
3	802-022C	HHCS 3/8-16X1 1/2 GR5
3	802-226C	HHCS 1/2-13X2 3/4 GR5
1	802-300C	HHCS 1/4-28X3/8 GR5
3	803-014C	NUT HEX 3/8-16 PLT
3	803-020C	NUT HEX 1/2-13 PLT
2	803-035C	NUT HEX 8-32 BRASS
3	803-036C	NUT HEX JAM 1/2-13 PLT
2	804-002C	WASHER INTERNAL STAR #8 BRASS
1	804-006C	WASHER LOCK SPRING 1/4 PLT
1	804-007C	WASHER FLAT 1/4 SAE PLT
3	804-013C	WASHER LOCK SPRING 3/8 PLT
6	804-016C	WASHER FLAT 1/2 SAE PLT
1	808-160C	SPKT 40B12 X 36T SPLINE BORE
1	808-271C	SPKT 40B16 X 36T SPLINE BORE
1	808-272C	SPKT 40B16 X 1 W/KW & SS
3	817-025C	NO. 40 12T IDLER SPKT
1	890-282C	GEAR BOX

## 6 Replacement Gearbox

### 195-227A 30' 3-Section Gearbox Replacement-Center

Your kit includes:

Qty.	Part No.	Part Description
1	136-072D	CHAIN RL #40 47 PITCHES
1	195-068D	IDLER MOUNT PLATE
1	195-229H	LH GEARBOX MOUNT
1	195-252D	CENTER GEARBOX COVER
3	195-253D	1/2" MOUNT SPACER
2	800-141C	SNAP RING EXT F/PEERLESS G.B.
2	801-001C	SCREW RD HD 8-32 X 3/8 BRASS
6	801-076C	SCR SELF TAPPING 3/8X1
3	802-022C	HHCS 3/8-16X1 1/2 GR5
3	802-226C	HHCS 1/2-13X2 3/4 GR5
1	802-300C	HHCS 1/4-28X3/8 GR5
3	803-014C	NUT HEX 3/8-16 PLT
3	803-020C	NUT HEX 1/2-13 PLT
2	803-035C	NUT HEX 8-32 BRASS
3	803-036C	NUT HEX JAM 1/2-13 PLT
2	804-002C	WASHER INTERNAL STAR #8 BRASS
1	804-006C	WASHER LOCK SPRING 1/4 PLT
1	804-007C	WASHER FLAT 1/4 SAE PLT
3	804-013C	WASHER LOCK SPRING 3/8 PLT
6	804-016C	WASHER FLAT 1/2 SAE PLT
1	808-160C	SPKT 40B12 X 36T SPLINE BORE
1	808-271C	SPKT 40B16 X 36T SPLINE BORE
1	808-272C	SPKT 40B16 X 1 W/KW & SS
3	817-025C	NO. 40 12T IDLER SPKT.
1	890-282C	GEAR BOX

## 195-228A 30' 3-Section Gearbox Replacement-RH

Your kit includes:

Qty.	Part No.	Part Description
1	120-237D	GEARBOX SHIFT HANDLE
1	136-072D	CHAIN RL #40 47 PITCHES
1	195-068D	IDLER MOUNT PLATE
1	195-230H	RH GEARBOX MOUNT
3	195-253D	1/2" MOUNT SPACER
1	197-239D	GEAR BOX COVER LH
2	800-141C	SNAP RING EXT F/PEERLESS G.B.
2	801-001C	SCREW RD HD 8-32 X 3/8 BRASS
6	801-076C	SCR SELF TAPPING 3/8X1
3	802-022C	HHCS 3/8-16X1 1/2 GR5
3	802-226C	HHCS 1/2-13X2 3/4 GR5
1	802-300C	HHCS 1/4-28X3/8 GR5
3	803-014C	NUT HEX 3/8-16 PLT
3	803-020C	NUT HEX 1/2-13 PLT
2	803-035C	NUT HEX 8-32 BRASS
3	803-036C	NUT HEX JAM 1/2-13 PLT
2	804-002C	WASHER INTERNAL STAR #8 BRASS
1	804-006C	WASHER LOCK SPRING 1/4 PLT
1	804-007C	WASHER FLAT 1/4 SAE PLT
3	804-013C	WASHER LOCK SPRING 3/8 PLT
6	804-016C	WASHER FLAT 1/2 SAE PLT
1	808-160C	SPKT 40B12 X 36T SPLINE BORE
1	808-271C	SPKT 40B16 X 36T SPLINE BORE
1	808-272C	SPKT 40B16 X 1 W/KW & SS
3	817-025C	NO. 40 12T IDLER SPKT
1	890-282C	GEAR BOX