



Update Kit Frame-Mounted Coulters

Used with:

- Model year 2004 and earlier coulters

General Information

These instructions explain how to install the Update Kit. This upgrade includes several components that improve the reliability of and consistency of results with frame-mounted coulters:

- New casting
- New spring guide tube
- Replacement grease zerk

These instructions apply to:

Option Package	Part Number
2005 COULTER CASTING UPDATE	249-136A

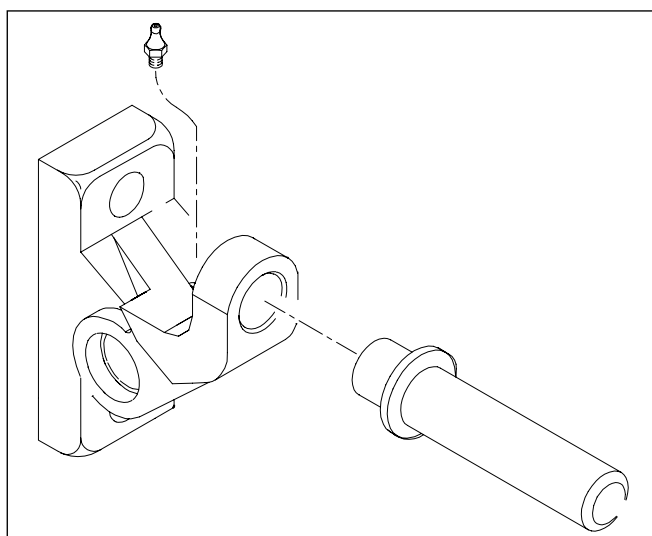


Figure 1
Update Kit Components

26097

Before You Start

Each kit converts one coulters.

For each kit, inventory the contents per the “**Parts List**” on page 6.

Review the instructions, to make sure the steps are understood and what tools are expected.

Have the following items at hand:

- Original or updated Parts Manual for your implement
- basic hand tools

If necessary, move the implement to a dry well-lighted location suitable for disassembly.

1. Raise and unfold the implement and, if equipped, install lift cylinder locks. Otherwise secure it so that it cannot lower during the work.
2. Secure the tractor.

Notations and Conventions

“Left” and “Right” are facing in the direction of machine travel.

- ① callouts identify components in the currently referenced Figure or Figures
- ⑪ to ⑭ callouts reference new parts from the list on page 6
- ⑤① to ⑦① callouts reference existing parts. The descriptions match those in your Parts manual.

Note on Disassembly

If access clearance permits, this update may be performed with the coulters mounted on the tool bar. These instructions assume this is possible.

On some planters and drills, and some row spacings, it may be necessary to first dismount the coulters before performing the update.

Dismount Coultter

Remove Coultter Blade

Refer to Figure 2

To reduce sharp object hazard, and to ease removal of the swing arm, first remove the coultter blade.

3. Remove and save four each:
 - ⑥1 NUT HEX 1/2-13 PLT
 - ⑥5 WASHER LOCK SPRING 1/2 PLT
 - ⑥0 RHSNB 1/2-13X1 1/4 GR5
4. Remove and save the coultter blade ①.

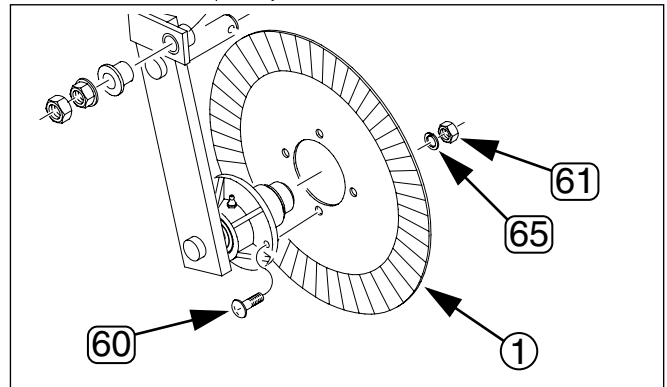


Figure 2
Remove Coultter Blade

26098

Remove Spring

Refer to Figure 3

Because parts to be removed later are under tension from the spring, remove it at this time.

5. Remove and save the outer jam nut:
 - ⑥2 NUT HEX JAM 3/4-10 PLT
6. Carefully remove and save the inner jam nut, washer and coil spring:
 - ⑥2 NUT HEX JAM 3/4-10 PLT
 - ⑤4 COULTTER SPRING WASHER
 - ⑤5 SPRING 2.25 O.D. X .5 COIL
7. Remove the old spring rod sleeve and bushing. These are not re-used:
 - ⑤7 SPRING ROD SLEEVE 1 1/8 OD
 - ⑥9 BUSHING COULTTER CASTING

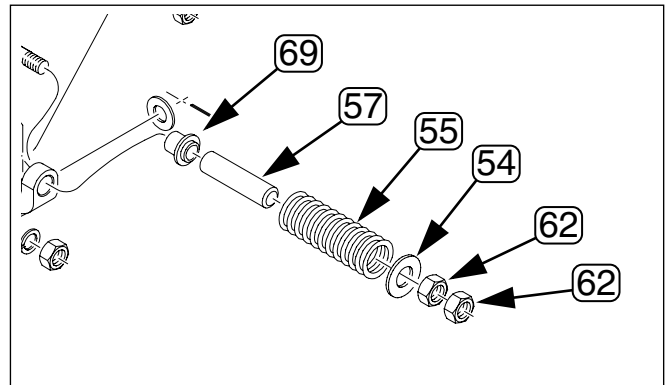


Figure 3
Remove Spring

26098

Remove Coultter Swing Arm

Refer to Figure 4

8. Remove and save one each:
 - 68 PIN COTTER 1/4 X 2 PLT
 - 67 WASHER FLAT 1 1/4 SAE PLT
9. Remove and save one each:
 - 62 NUT HEX JAM 3/4-10 PLT
 - 64 NUT HEX FLANGE LOCK 3/4-10 PLT
 - 70 SWING ARM BUSHING
 - 52 FERT COULTER SWING ARM
10. If the existing coultter bushing:
 - 71 BUSHING 1.50ODX1.25IDX2.94 happens to come loose, it is not saved or reused.

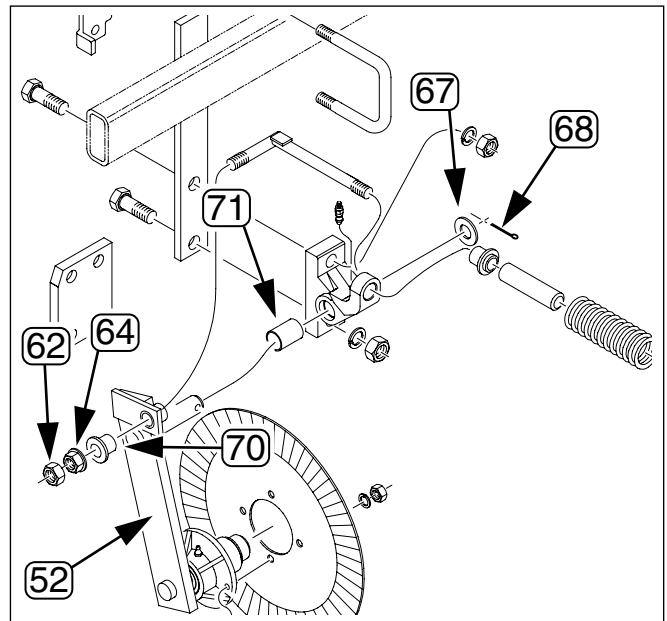


Figure 4
Remove Swing Arm

26098

Dismount Casting

Refer to Figure 5

11. Remove and save two each:
 - 63 NUT HEX 7/8-9 PLT
 - 66 WASHER LOCK SPRING 7/8 PLT
 - 59 HHCS 7/8-9X2 3/4 GR5
12. If any offset mount plate is present:
 - 51 OFFSET COULTER MOUNT PLATE note its orientation for re-installation.
13. Remove the old casting:
 - 53 MACH.MOUNT CASTING COULTER
The old casting is not saved or reused, but it contains a part that is reused.
14. Remove and save the spring rod from the casting:
 - 56 COULTER SPRING ROD WLDMT
15. It may be necessary to remove the old zerk:
 - 58 GREASE ADAPT 1/4-28M X 1/4 TB
in order to remove the rod. The zerk is not saved or reused.

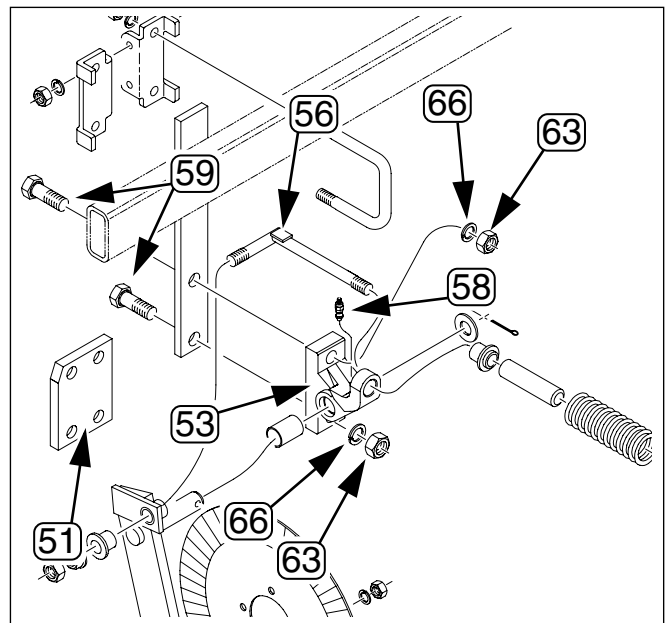


Figure 5
Remove Old Casting

26098

Prepare New Casting

Refer to Figure 6

16. Select one each new:
 - 12 249-050S CLTR CASTING ASSY
 - 13 800-001C GREASE ZERK STRAIGHT 1/4-28
 and one saved:
 - 56 COULTER SPRING ROD WLDMT
17. Insert the rod 56 in the casting 12 and install the grease zerk 13.

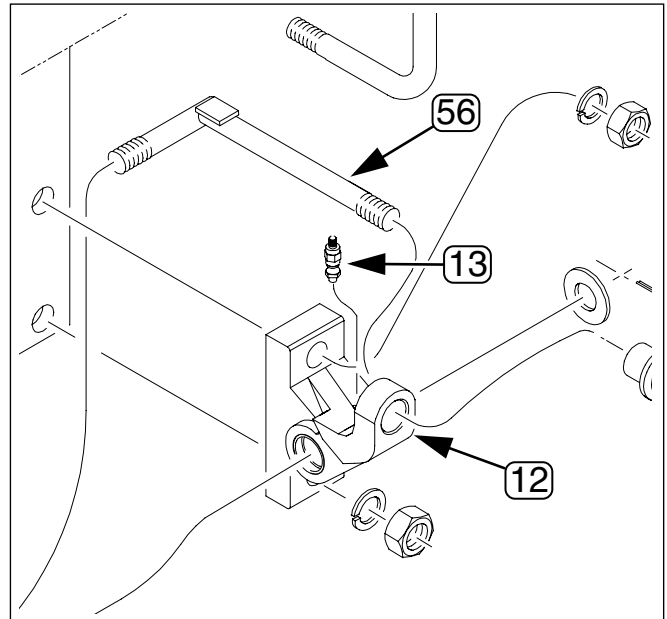


Figure 6
Prepare New Casting

26099

Mount New Casting

Refer to Figure 7

18. Select two each saved:
 - 63 NUT HEX 7/8-9 PLT
 - 66 WASHER LOCK SPRING 7/8 PLT
 - 59 HHCS 7/8-9X2 3/4 GR5
 and any saved:
 - 51 OFFSET COULTER MOUNT PLATE
19. Attach the new casting assembly 12 to the spring bar 1, re-mounting any removed plate 51 in its original orientation.

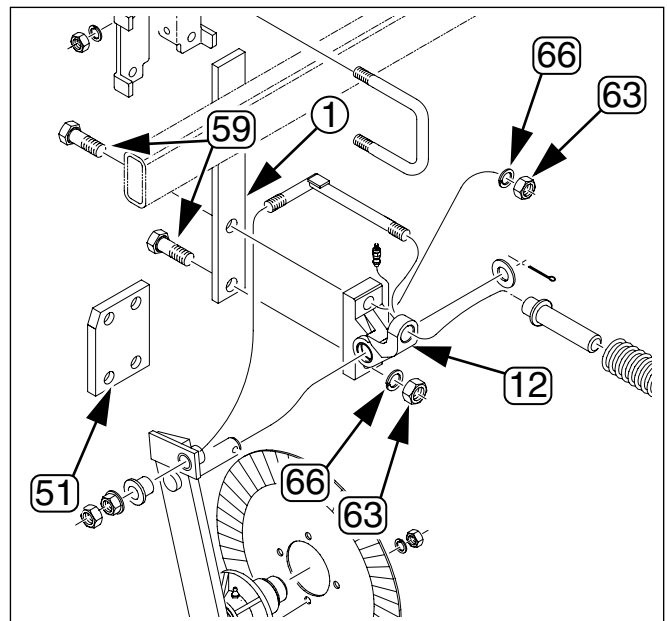


Figure 7
Mount New Casting

26099

Re-Mount Swing Arm

Refer to Figure 8

20. Select one each saved:
 - 52 FERT COULTER SWING ARM
 - 70 SWING ARM BUSHING
 - 64 NUT HEX FLANGE LOCK 3/4-10 PLT
 - 62 NUT HEX JAM 3/4-10 PLT
 - 68 PIN COTTER 1/4 X 2 PLT
 - 67 WASHER FLAT 1 1/4 SAE PLT
21. Insert the swing arm 52 into the new casting 12.
22. Secure the pivot with the washer 67 and cotter pin 68.
23. Insert the swing arm bushing 70 into the arm 52. Secure the spring rod 56 to the swing arm 52 with the flange nut 64 and jam nut 62.

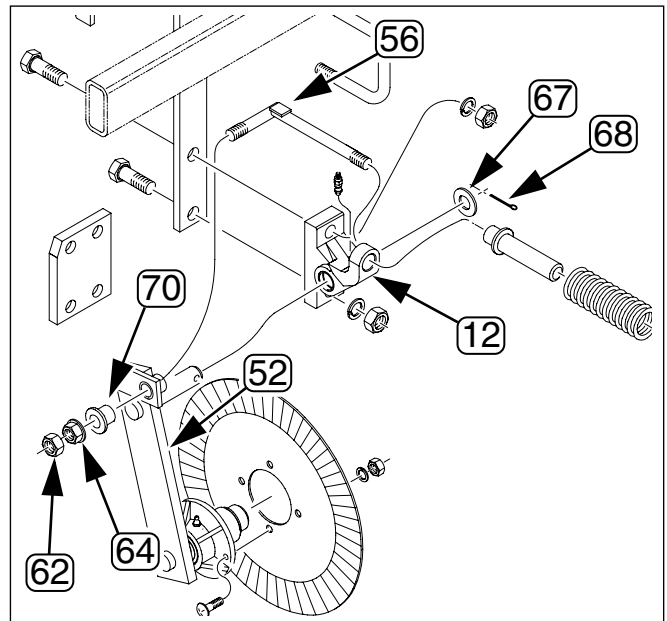


Figure 8
Re-Mount Swing Arm

26099

Install New Spring Guide

Refer to Figure 9

24. Select one new:
 - 14 805-331C COULTER SPRING GUIDE TUBE
 one each saved:
 - 54 COULTER SPRING WASHER
 - 55 SPRING 2.25 O.D. X .5 COIL
 and two saved:
 - 62 NUT HEX JAM 3/4-10 PLT
25. Place the new guide 14 over the spring rod 56 and make sure it is fully seated in the new casting
26. Place the saved spring 55 over the spring rod 56, followed by the saved washer 54.
27. Thread on one of the jam nuts 62. Tighten it until the spring length is 9⁷/₈in to 10in.
28. Thread on the second jam nut 62, and tighten (without allowing the first to make additional turns).

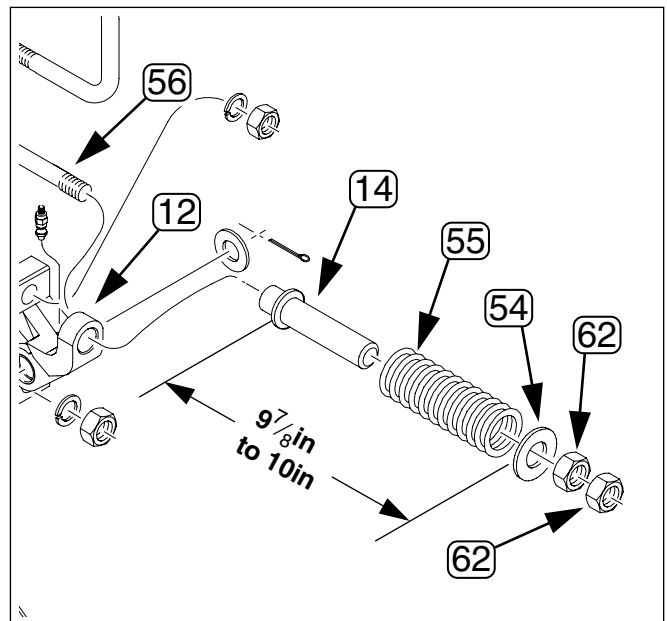


Figure 9
Install New Spring Guide

26099

Re-Install Coultter Blade

Refer to Figure 10

29. Select four each saved:
- ① coultter blade
 - ⑥1 NUT HEX 1/2-13 PLT
 - ⑥5 WASHER LOCK SPRING 1/2 PLT
 - ⑥0 RHSNB 1/2-13X1 1/4 GR5
30. Place the blade ① on the hub and secure with the 1/2-13 bolts ⑥0, lock washers ⑥5 and nuts ⑥1.

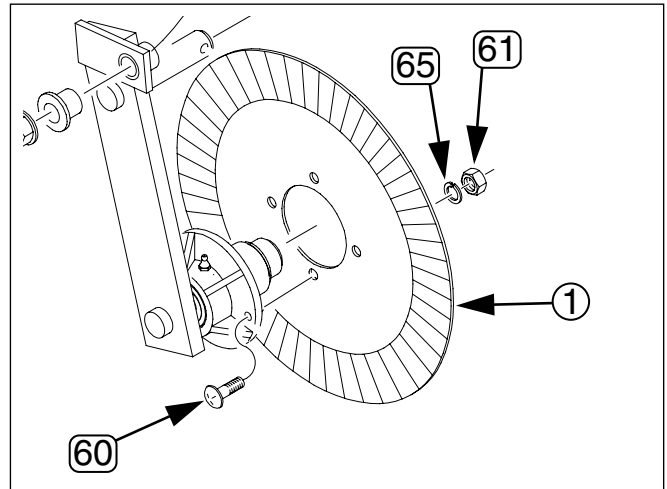


Figure 10
Re-install Blade

26099

Reference Information

Abbreviations

GR5	Grade 5
HHCS	Hex Head Cap Screw (Bolt)
RHSNB	Round Head Shank Neck Bolt
MNT	Mount
PLT	Plated

Torque Values

Fastener/Fitting	N-m	Ft-Lbs
1/4-28	13	10
1/2-13 GR5	105	76
3/4-10	360	265
7/8-9	858	430

Parts List

New Parts Included in the 249-136A Update Kit:

Callout	Quantity	Part No.	Part Description
①1	1	249-137M	This manual
①2	1	249-050S	CLTR CASTING ASSY
①3	1	800-001C	GREASE ZERK STRAIGHT 1/4-28
①4	1	805-331C	COULTER SPRING GUIDE TUBE

Great Plains Manufacturing, Inc.

Corporate Office: PO Box 5060
Salina, KS 67402-5060 USA