



## Yield-Pro® Planter 1.6 Bu. Hopper Enhancement

Used with YP425/625/825A Planters:

- YP425A s/n B1012N-
- YP625A s/n B1057Q-
- YP825A s/n B1016S-
- YP3P425A s/n B1006M-
- YP3P625A s/n B1008P-
- YP3P825A s/n B1013R-



When you see this symbol, the subsequent instructions and warnings are serious - follow without exception. Your life and the lives of others depend on it!

## General Information

These instructions explain how to install a Yield-Pro® 1.6 bushel hopper enhancement. One kit is required per each planter hopper, either right hand or left hand. (This enhancement is for planters prior to July 2011 that have the lesser capacity 1 bu. hoppers.)

Kit	Kit Description
403-609A	RH 1.6BU HOPPER FLD KIT
403-610A	LH 1.6BU HOPPER FLD KIT

### Tools Required

- basic hand tools
- support stands

### Work Location

Move the implement to a flat location for installation.

### **CAUTION**

**Crushing and Sharp Object hazards:**

Be careful working near openers. Discs and other parts may be sharp.

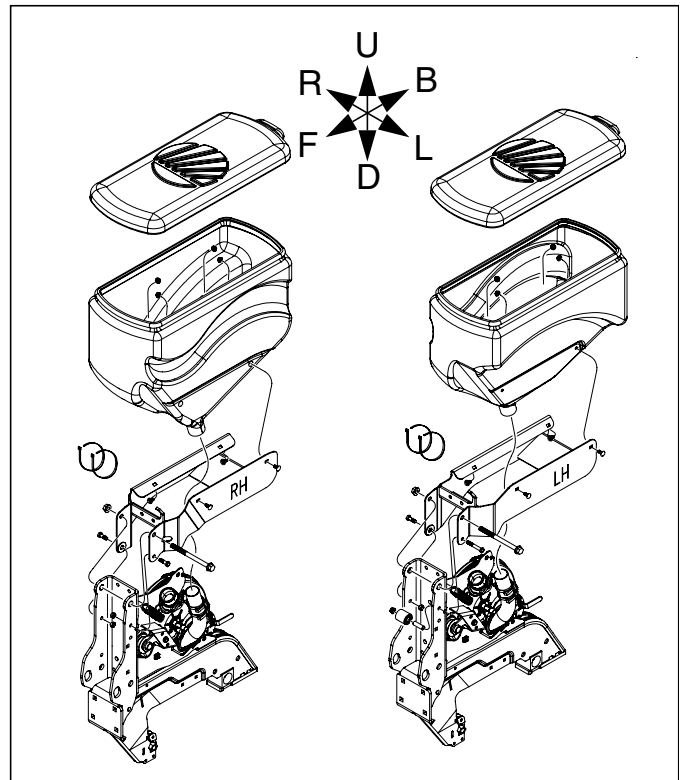
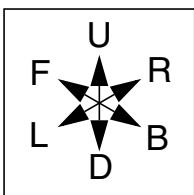


Figure 1  
Right Hand and Left Hand  
Hopper Enhancement Kits

32233

### Notations and Conventions



“Left” and “Right” are facing in the direction of machine travel. An orientation rose in the line art illustrations shows the directions of Left, Right, Front, Back, Up, Down.

### Call-Outs

- ① to ⑩ Single-digit callouts identify components in the currently referenced Figure. These numbers may be reused for different items from page to page.
- ⑪ to ⑳ Two-digit callouts in the range 11 to 21 reference new parts from the list on page 5.

## Remove Old Hopper

### Refer to Figure 2

Before beginning, raise machine up in air at a sufficient angle so springs are relaxed with no tension remaining on the parallel arms. Support with stands.

### **CAUTION**

#### **Crushing Hazard:**

Do not work around heavy equipment without support stands appropriate to the amount of weight they must bear.

1. Remove clamp ① at base of hose ② on the old hopper.  
This releases the hopper and all parts above hose ② as one unit. Discard all parts, they will not be reused.
2. Disconnect the air inlet hose from the seed meter by removing its clamp (see photo below). Save the clamp for later assembly.
3. If a blockage monitor is present, disconnect the wire leading to it by removing the zip tie holding it in place. (Do this at the same time as disconnecting the other hoses.)
4. Remove hex nut ③ and 6<sup>5</sup>/<sub>8</sub> inch bolt ④, also remove hex nut ⑤, washer ⑥ and 4 inch bolt ⑦.  
This releases the hopper support weldment ⑧ and RH and LH hopper braces ⑨ and ⑩ from the opener arm.

Discard the hopper support weldment and braces.  
Retain the opener arm.

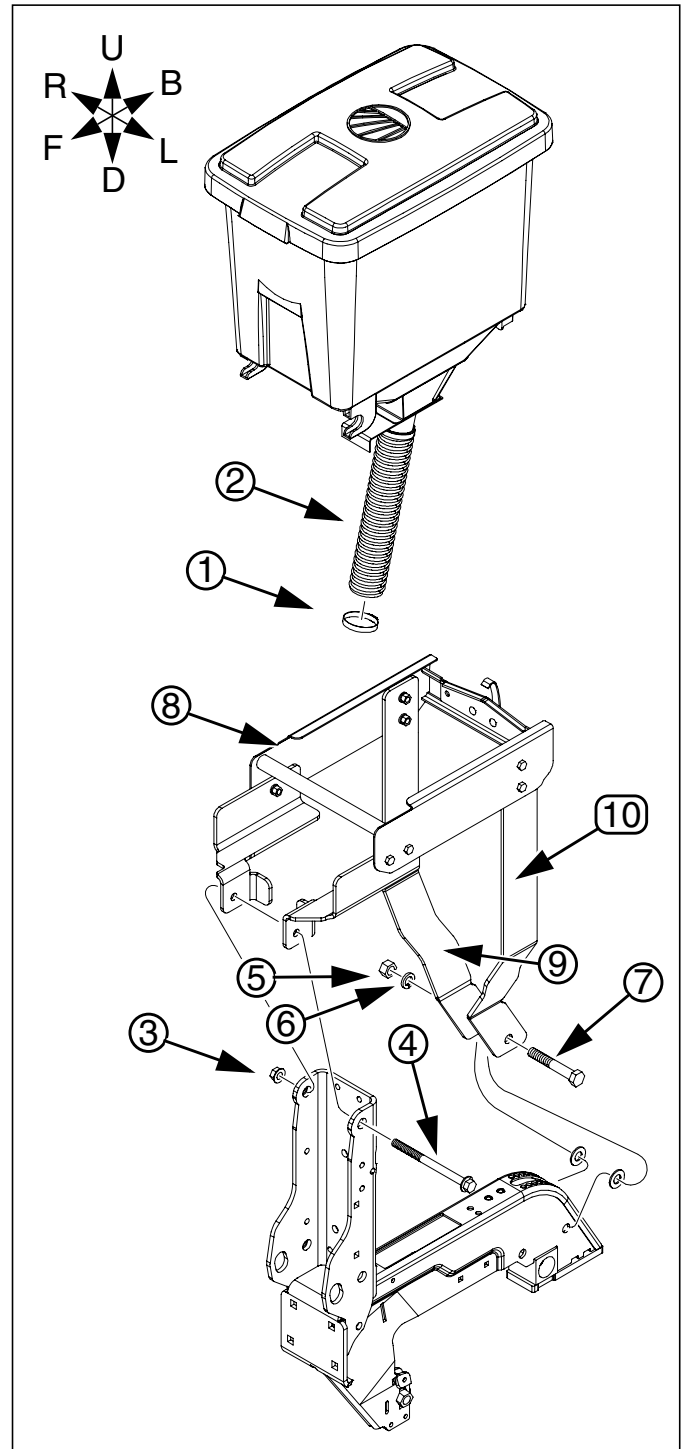
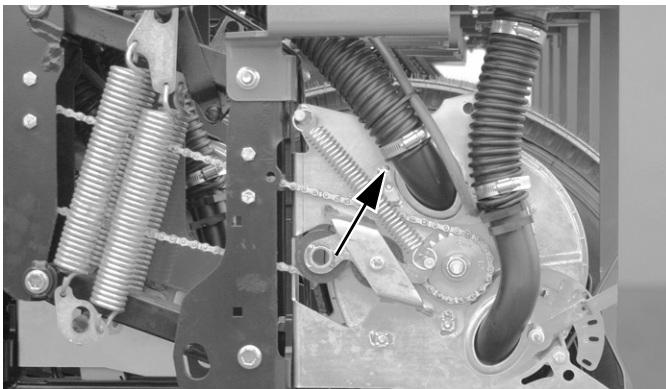


Figure 2  
Remove Old Hopper

32233

## Install New Right Hand Hopper

### Refer to Figure 3

The right hand and left hand opener mounts are offset. Be sure the placement is correct for right/left offset orientation.

### Install Hopper Support Mount

5. Select:
- 1 (12) 403-565H RH HOPPER MOUNT WLDMNT
  - 2 (18) 802-017C HHCS 3/8-16X1 GR5
  - 1 (19) 802-323C HHCS 1/2-13X6 1/2 GR5
  - 1 (20) 803-169C HEX FLG LOCK 1/2-13 PLT
  - 2 (21) 803-209C FLANGE LOCK 3/8-16 PLT

Secure mount to opener arm bracket using bolt (19) and nut (20), just below this hardware insert bolts (18) and flange locks (21). Tighten.

### Place Hopper on Mount

6. Select:
- 1 (13) 403-594K HOPPER ASSEMBLY RH
  - 4 (31) 802-092C RHSNB 5/16-18X3/4 GR5
  - 4 (32) 803-177C NUT HEX FLG TP LK 5/16-18ZNYCR

Place new 1.6 bu hopper (13) on hopper mount (12) and adjoin bottom opening to seed tube. Secure hopper to mount with four carriage bolts (31) and nuts (32).

### Connect Meter Air Hose

7. Select one:
- (16) 800-060C CABLE TIE .19X14.25 3DIA 50

Route the air hose through the top left hand corner of the mount and reconnect it to the air inlet elbow on the tube meter securing with the clamp saved earlier.

8. Secure the air hose to the tab mount (99) with the cable tie (16).

### Connect Blockage Monitor Wire

9. Select one:
- (17) 800-112C CABLE TIE .19X7.25 1.75D 50

Route the blockage monitor cable through the hole in the front of the mount (12) and reconnect to the harness. Secure the cable to the mount (12) with cable tie (17) through hole (98) in the mount and opener.

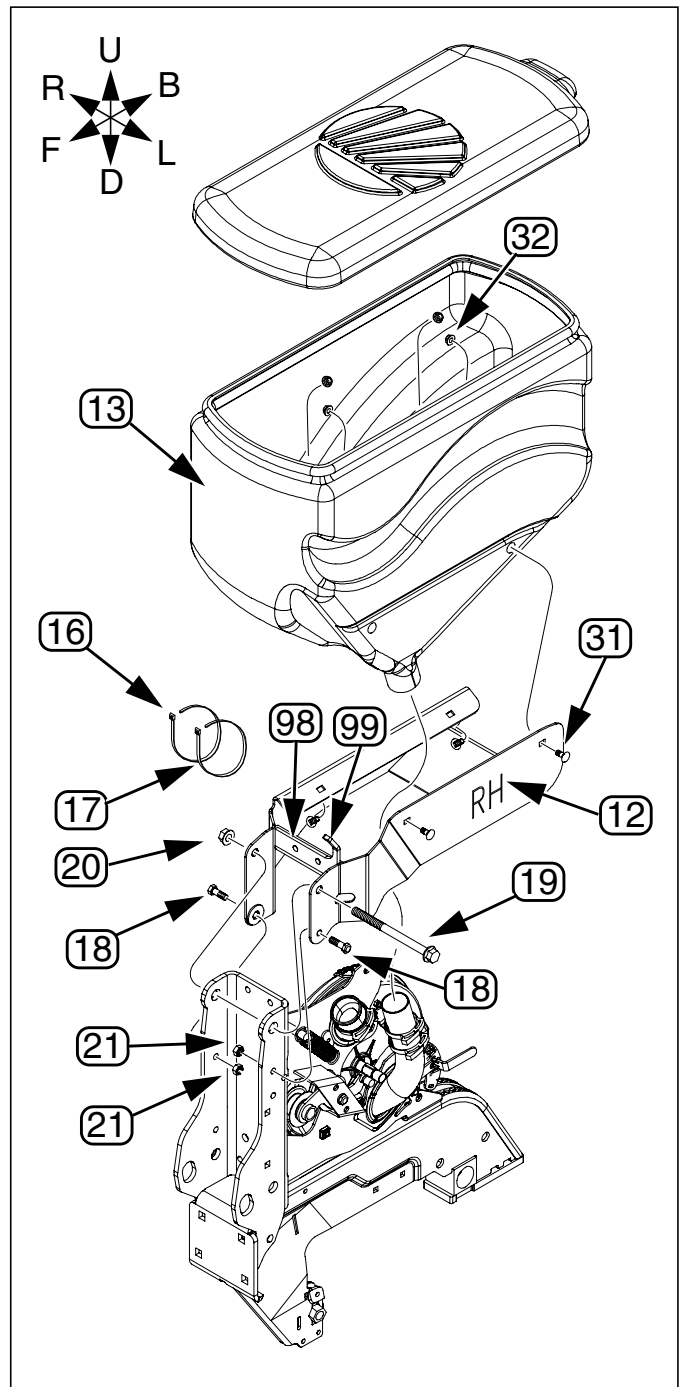


Figure 3  
Right Hand Hopper

32233

## Install New Left Hand Hopper

### Refer to Figure 4

The right hand and left hand opener mounts are offset. Be sure the placement is correct for right/left offset orientation.

The left hand mount has a 3/8in bolt (23) that is reused (from the existing assembly). It attaches the idler spool on the bracket.

### Install Hopper Support Mount

10. Select:
- 1 (14) 403-564H LH HOPPER MOUNT WLDMNT
  - 1 (18) 802-017C HHCS 3/8-16X1 GR5
  - 1 (19) 802-323C HHCS 1/2-13X6 1/2 GR5
  - 1 (20) 803-169C HEX FLG LOCK 1/2-13 PLT
  - 2 (21) 803-209C FLANGE LOCK 3/8-16 PLT

Secure mount to opener arm bracket using bolt (19) and nut (20).

Just below this hardware insert idler spacer tube (25), idler spool (24), and secure with saved bolt (23) and flange lock (21). On opposite side insert bolt (18) and flange lock (21). Tighten.

### Place Hopper on Mount

11. Select one each:
- 1 (15) 403-595K HOPPER ASSEMBLY LH
  - 4 (31) 802-092C RHSNB 5/16-18X3/4 GR5
  - 4 (32) 803-177C NUT HEX FLG TP LK 5/16-18ZNYCR

Place new 1.6 bu hopper (15) on hopper mount (14) and adjoin bottom opening to seed hose. Secure hopper to mount with four carriage bolts (31) and four nuts (32).

### Connect Meter Air Hose

12. Select one:
- (16) 800-060C CABLE TIE .19X14.25 3DIA 50
- Route the air hose through the top left hand corner of the mount and reconnect it to the air inlet elbow on the tube meter securing with the clamp saved earlier. Secure the air hose to the tab mount (99) with the cable tie (16).

### Connect Blockage Monitor Wire

13. Select one:
- (17) 800-112C CABLE TIE .19X7.25 1.75D 50
- Route the blockage monitor cable through the hole in the front of the mount (14) and reconnect to the harness. Secure the cable to the mount (14) with cable tie (17) through hole (98) in the mount and opener.

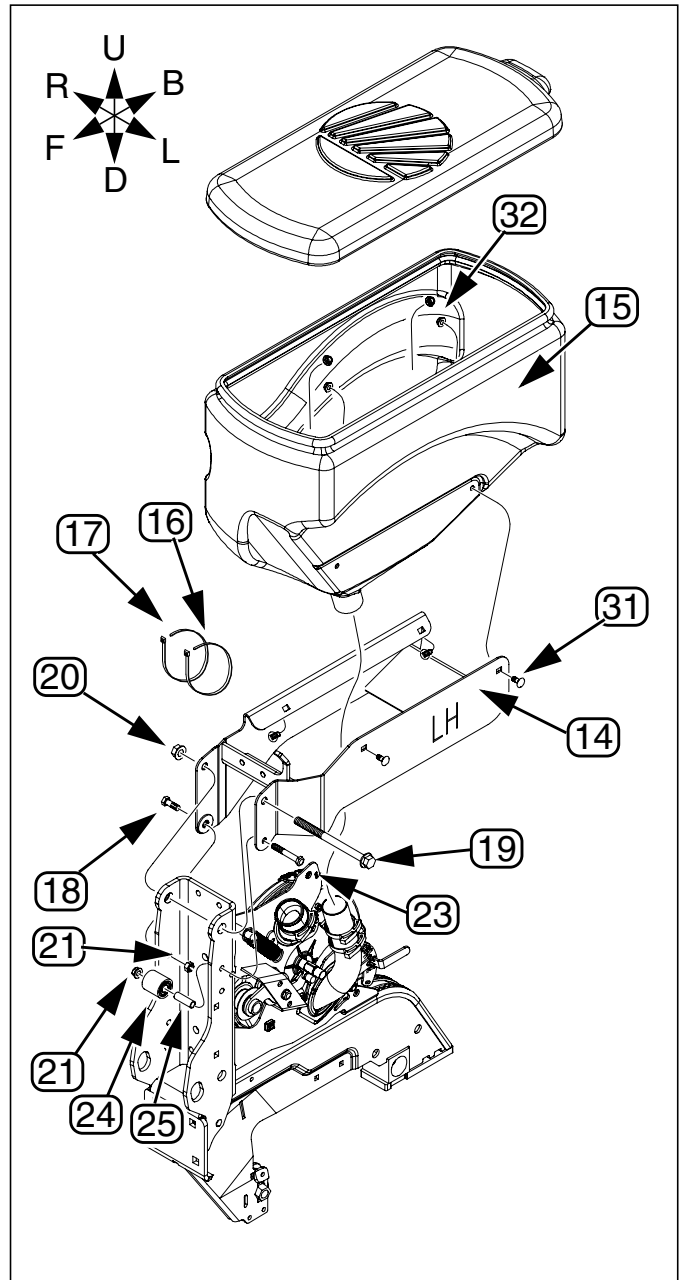


Figure 4  
Left Hand Hopper

32233

## Appendix

### Part Lists

#### New Parts

The part call-out numbers in this list match all Figures in these installation instructions. Part descriptions match those in your updated Parts Manual. Quantities are units ("ea").

#### Kit Contents

403-609A RH 1.6BU HOPPER FLD KIT

403-610A LH 1.6BU HOPPER FLD KIT

Callout	Quantity in Kit:		Part Number	Part Description
	403-609A	403-610A		
11	1	1	403-612M	MANUAL 1.6 BU HOPPER ENHANCEMENT
12	1	0	403-565H	RH HOPPER MOUNT WLDMNT
13	1	0	403-594K	HOPPER ASSEMBLY RH
14	0	1	403-564H	LH HOPPER MOUNT WLDMNT
15	0	1	403-595K	HOPPER ASSEMBLY LH
16	1	1	800-060C	CABLE TIE .19X14.25 3DIA 50
17	1	1	800-112C	CABLE TIE .19X7.25 1.75D 50
18	2	2	802-017C	HHCS 3/8-16X1 GR5
19	1	1	802-323C	HHCS 1/2-13X6 1/2 GR5
20	1	1	803-169C	HEX FLG LOCK 1/2-13 PLT
21	2	2	803-209C	FLANGE LOCK 3/8-16 PLT

#### Other Parts

The part call-out numbers in this list match all Figures in these installation instructions. Part descriptions match those in your updated Parts Manual.

Callout	Quantity	Part Number	Part Description
31	4	802-092C	RHSNB 5/16-18X3/4 GR5
32	4	803-177C	NUT HEX FLG TP LK 5/16-18ZNYCR

**Great Plains Manufacturing, Inc.**

Corporate Office P.O. Box 5060  
Salina, Kansas 67402-5060 USA