



Nutri Pro Wing Pivot Update Manual

Nutri-Pro® Fertilizer Applicators



When you see this symbol, the subsequent instructions and warnings are serious - follow without exception. Your life and the lives of others depend on it!

General Information

These instructions explain how to install a wing pivot hinge update kit. It takes one kit (includes a left and a right hinge) to update one implement:

Kit	Kit Description
407-697A	NP Wing Pivot Update

Tools Required

- basic hand tools
- two jack stands
- right angle grinder
- welder capable of welding 3/8" material, welding visor and gloves
- Great Plains green spray paint (p/n 821-001C)

Work Location

Move the implement to a location with:

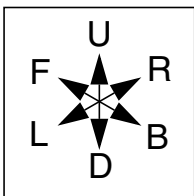
- flat, smooth non-flammable surface free of combustibles
- adequate illumination
- clear surface beneath for recovery of any falling or dropped parts

CAUTION

Sharp Object Hazard:

Be careful working near discs and tines. Edges may be sharp.

Notations and Conventions



"Left" and "Right" are facing in the direction of machine travel. An orientation rose in the line art illustrations shows the directions of Left, Right, Front, Back, Up, Down.

Call-Outs

⑪ to ⑲ Two-digit callouts in the range 11 to 19 reference new parts from the list on page 5.

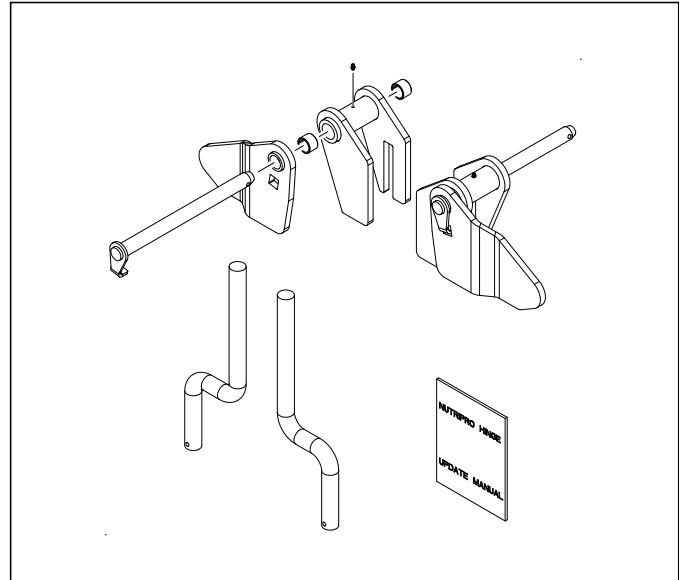


Figure 1
Nutri-Pro® Hinge Update Kit

32203

Setup

1. Place one jack stand under the end of the wing frame and one under the rear tube in the middle of the wing.

Remove

Refer to Figure 2

Note: These instructions begin with the left wing of the implement and all illustrations correspond by showing the left wing. Perform all steps for the right wing also.

2. Remove only the forward roll pin (53) and pivot pin (52) that hold the left wing and center frames together.
3. Only on models NP30A-11, NP30A-13, NP30L-11 and NP30L-13:

Remove the coulter assembly from the wing - nearest the pivot. The straight shank will be replaced by an offset shank in step 14.

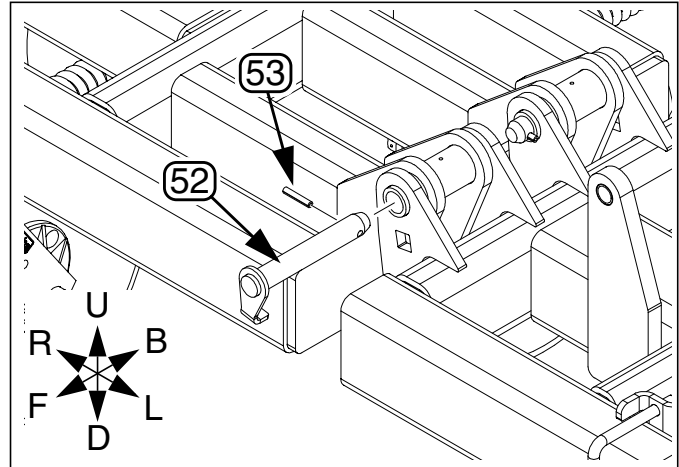


Figure 2
Remove Forward Pivot Pin

32214

Grind

Refer to Figure 3

4. Remove the paint before welding by grinding the ends of both the center frame (1) and wing frame (2) tubes. (The only areas that need grinding are where welding will occur.)

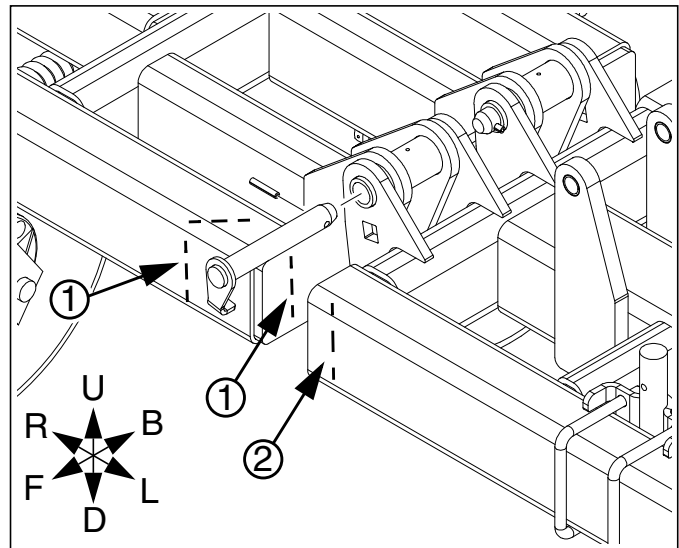


Figure 3
Grind Ends

32214

Attach New Pivot Weldments

Refer to Figure 4 and Figure 5

5. Insert one bushing (19) into each end of center LH wing pivot weldment.
6. On the end of the LH center frame slip the slotted end of the center LH wing pivot weldment (13).
(13) 407-696H CENTER LH WING PIVOT WLDMNT
7. Test fit long pivot pin (16) before welding.
8. For accurate placement locate dimensions from outside edge of middle section end plate and top of middle section front tube then weld in place around all edges.

Note: Weld should be .38 fillet all sides all around.

9. On the end of the LH wing frame place the left front wing pivot (12).
(12) 407-695H LEFT FRONT WING PIVOT
10. For accurate placement locate dimensions from top of front wing tube and inside edge of tube on end of wing then weld all around.

Note: Weld should be .38 fillet all sides all around.

11. To protect against corrosion, paint areas that were grinded and where new welds are. Use Great Plains green spray paint.

Reassemble

12. Join the wing frame to the center frame by placing the new long pivot pin (16) through all bracket holes and secure with roll pin (53) saved from step 2.
(16) 407-700H NP WING PIVOT PIN LONG WLDM
13. Insert grease zerk (17) into center weldment.
(17) 800-001C GREASE ZERK STRAIGHT 1/4-28

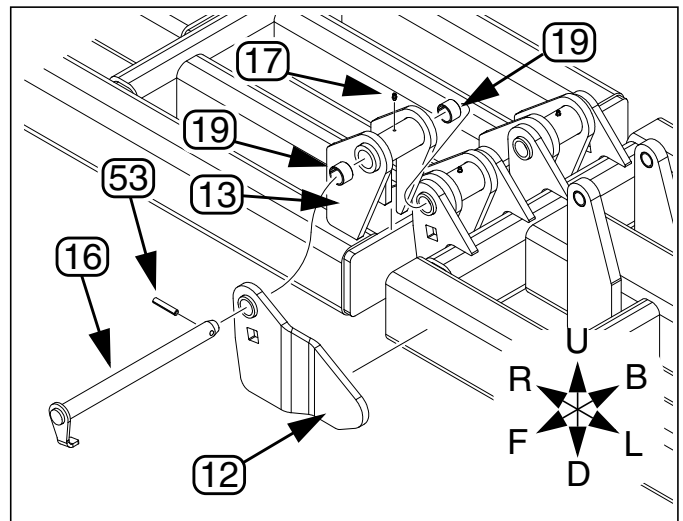


Figure 4
Left Wing Frame

32212

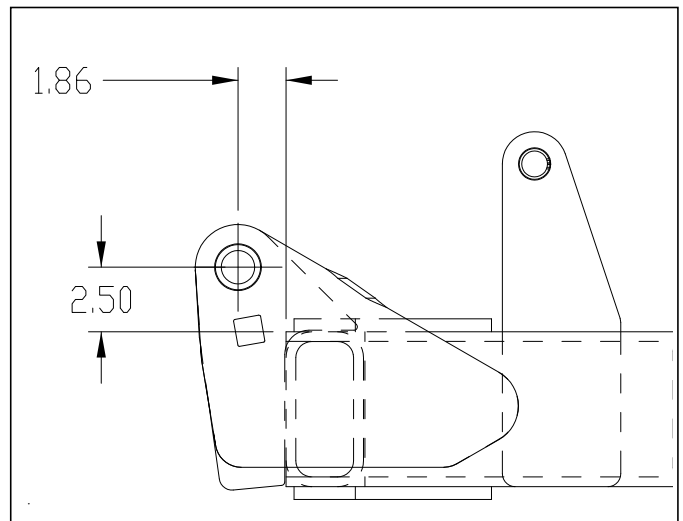


Figure 5
Dimensions

32216

Replace Coultter

Refer to Figure 6

- For models where straight shank was removed, insert left offset shank (18) into front wing pivot, align coultter with shank and attach coultter.

(18) 820-132C 1 1/2 X 22 OFFSET SHANK

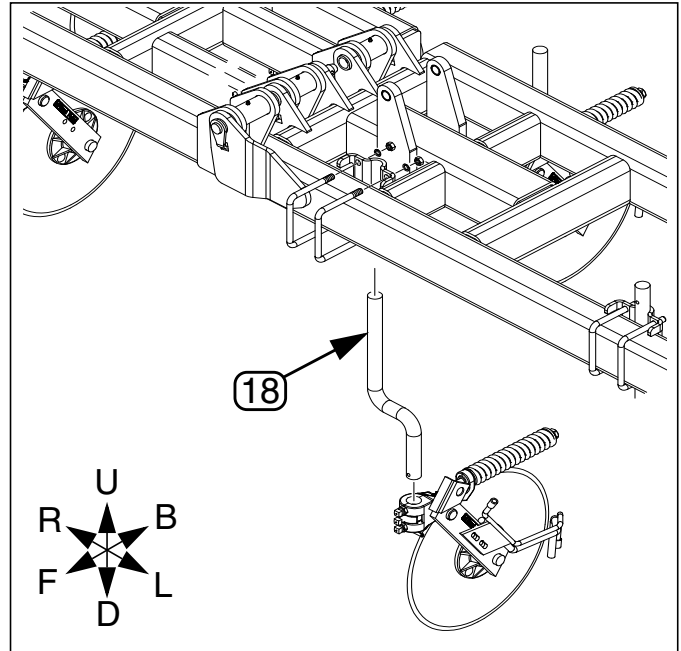


Figure 6
Offset Shank

32211

Finish

- Repeat all steps for right wing.

Appendix

Part Lists

New Parts

The part call-out numbers in this list match all Figures in these installation instructions. Part descriptions match those in your updated Parts Manual.

Quantities are units ("ea").

Kit Contents

407-697A NP Wing Pivot Update

Callout	Quantity	Part Number	Part Description
11	1	407-703M	NUTRIPRO HINGE UPDATE MANUAL
12	1	407-695H	LEFT FRONT WING PIVOT
13	1	407-696H	CENTER LH WING PIVOT WLDMNT
14	1	407-698H	CENTER RH WING PIVOT WLDMNT
15	1	407-699H	RIGHT FRONT WING PIVOT
16	2	407-700H	NP WING PIVOT PIN LONG WLDM
17	2	800-001C	GREASE ZERK STRAIGHT 1/4-28
18	2	820-132C	1 1/2 X 22 OFFSET SHANK
19	4	890-011C	BUSHING SPINDLE 1 1/2X1 1/4

Existing Parts Affected

The following existing parts are involved in the kit installation. The Disposition column indicates whether the part is left in place, moved or not re-used.

The part call-out numbers in the list matches all Figures in the installation instructions. The descriptions match those in your implement Parts manual.

Callout	Part No.	Part Description	Part Disposition
51	204-026D	SHANK 1 1/2D X 22 FERT COUL	Removed. Not reused.
52	407-473H	WING PIVOT PIN WELDMENT	Removed. Not reused.
53	805-249C	PIN ROLL 3/8 X 2 PLT	Removed and reinstalled.

Great Plains Manufacturing, Inc.

Corporate Office P.O. Box 5060
Salina, Kansas 67402-5060 USA