

## Installation Instructions



## 2003 and 2004 Inline Ripper and Verti-Till Ripper Shank Holder Clamp Bolt Update

Used with:

- 3-8 Shank Inline Ripper  
(Rigid mount shanks only)
- 5, 7 & 9 Shank Verti-Till Ripper  
(Rigid mount shanks only)



*When you see this symbol, the subsequent instructions and warnings are serious - follow without exception. Your life and the lives of others depend on it!*

## Assembly Instructions

Refer to Figure 1

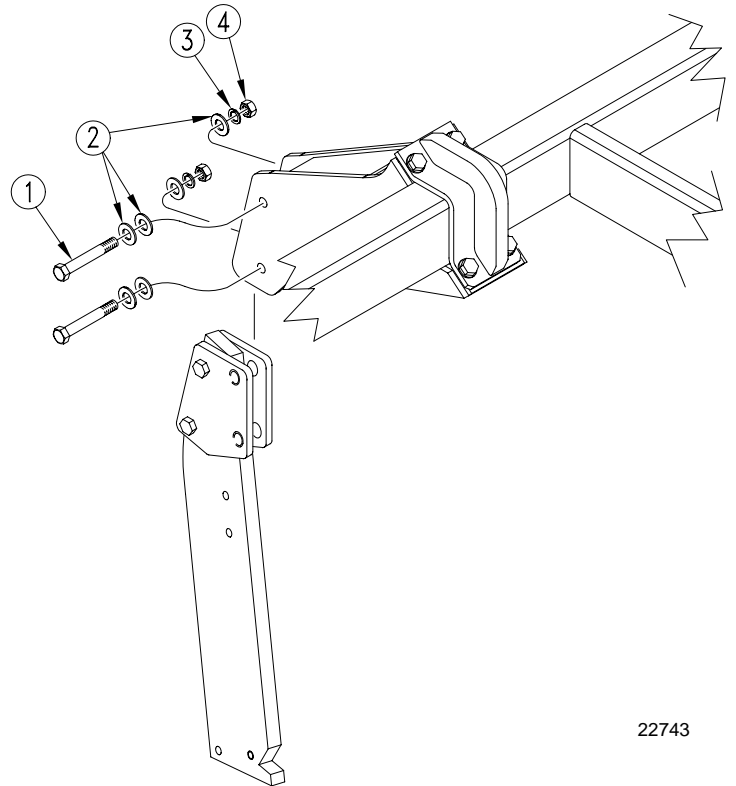
1. Remove, one at a time, the existing shank holder clamp bolts and nuts.
2. Replace with a 3/4" x 6" GR8 bolts (1), 3/4" hardened flat washers (2), 3/4" lock washers (3) and 3/4" nuts (4).
3. Place two flat washers (2) against the head of the bolt (1) and one flat washer (2) next to the lock washer (3).

NOTE: Extra hardened washers allows use of longer bolt to keep threads out of shear area.

4. Torque bolts (1) to 400 FT LBS.

**IMPORTANT!** Torque bolts to 400 FT LbS.

5. Re-torque bolts to 400 FT LBS after one hour of operation and again after five hours of operation.
6. Re-torque bolts periodically to 400 FT LBS.



22743

Figure 1

## 598-023A Shank Holder Bolt Field Update

Your kit includes:

Qty.	Part No.	Part Description
2	802-478C	HHCS 3/4-10 X 6 GR8
2	803-027C	NUT HEX 3/4-10 PLT
2	804-023C	WASHER LOCK SPRING 3/4 PLT
6	804-093C	WASHER FLAT 3/4 HARD ASTM F 436