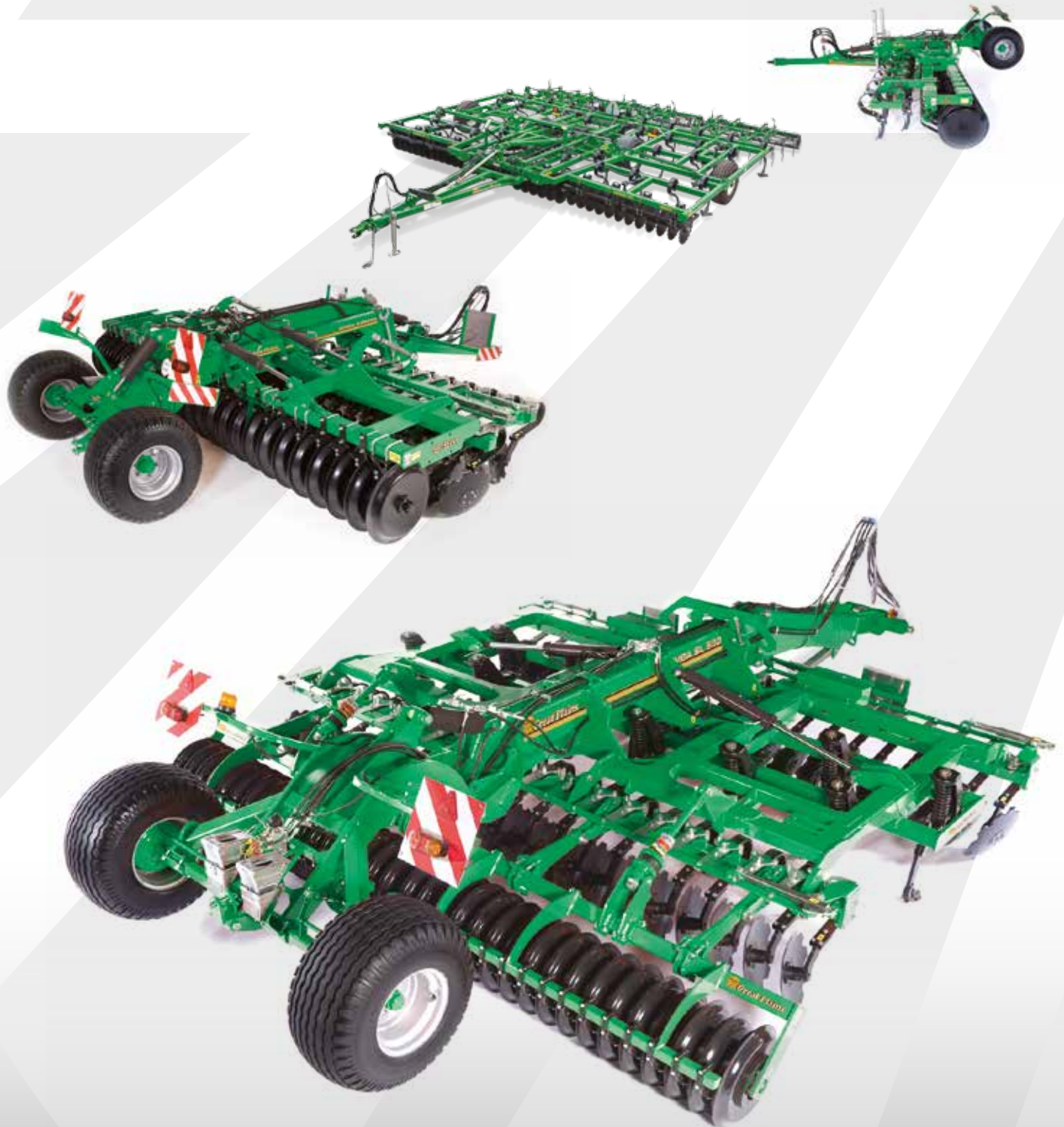




TILLAGE SYSTEMS

TRAILED

PRODUCT RANGE





# Harvest Starts Here

## TILLAGE

The key to a successful harvest is good preparation. Eliminating compaction in the soil to maximise the roots' uptake of moisture and nutrients is vital, as is the preparation of a fine, level, weatherproof seedbed. Whether you operate a conventional tillage or reduced tillage regime, Great Plains offers a wide range of innovative soil loosening, cultivation and consolidation equipment to suit different soil types and operating practices.

## SEEDING

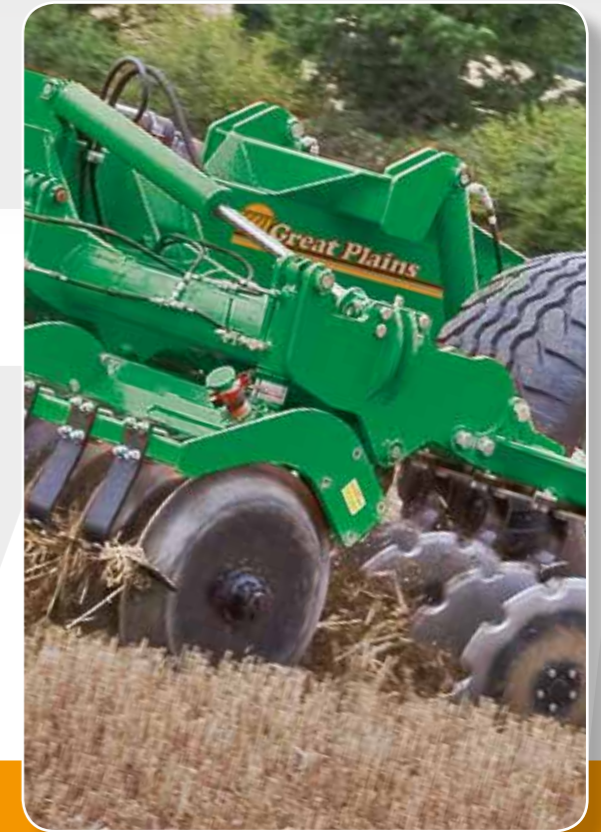
Consistent seed spacing and seed depth and good seed-to-soil contact are vital in your drive to maximise yields. Great Plains drills are designed and built around these fundamental principles. Our range of cultivator and air drills individually combine innovative features, field-proven technology and outstanding build quality to offer first-class seeding solutions in reduced tillage, plough-based and direct drilling regimes.

## PLANTING

The accuracy of the planter is critical to the success of your operation. The planter must be able to precisely place the seed in widely varying residue and soil types. Achieving the optimum seed spacing and seed depth and good seed to soil contact are essential. Every Great Plains Yield-Pro® Planter incorporates all of the key features that enable you to produce outstanding yields season-after-season.

## Trailed Tillage Equipment

Great Plains offers a wide range of innovative trailed tillage equipment including disc and stubble cultivators, presses and rollers. Designed and manufactured around proven agronomic principles, our products provide effective solutions that meet your needs for seedbed preparation, soil loosening and consolidation. Machines are available in various working widths/depths and to suit all soil types and conditions.



## CONTENTS

04/05	Company Information	20/21	Great Plains Turbo-Chisel
06/07	Simba SLD	22	The need for consolidation
08/09	Simba SL	23	Simba Aqueel II Roller
10/11	Simba X-Press	23	Simba HD Roller
12/13	Simba Disc Harrows	23	Simba V-Roller
14/15	Simba UniPress	23	Simba MaxLift Roller
15	Simba Single Press	24/25	Simba DD Ring
16/17	Simba CultiPress	25	Simba DD Lite
17	Simba Double Press	26/27	Technical Specifications
18/19	Great Plains Disc-o-Vator		

## Trailed Equipment Range



SL



SLD



X-Press



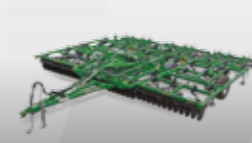
CultiPress



UniPress



Disc-O-Vator



Turbo-Chisel



Single Press



Double Press



Disc Harrows

# Our Mission



Setting the pace through innovation

To Be a Company Where Innovation, Teamwork and a Desire to Improve Combine to:

- Delight Our Customers
- Provide a Rewarding Workplace for our Employees
- Generate Profits for Stability and Growth



*"As agricultural producers, we're all aware of the increasing pressure to produce more with less. The demand for higher efficiency and increasing productivity on the farm has never been greater. At Great Plains, we listen closely to our customers. We work as a team, continually breaking new ground and innovating new products that position your operation to profit in a changing agricultural environment."*

Roy Applequist. Owner, Great Plains Mfg., Inc.

## FROM STRENGTH TO STRENGTH

Founded in 1976 by President and Owner Roy Applequist, Great Plains Manufacturing employs more than 1,400 people in eight Central Kansas communities and Sleaford, England. In addition to its domestic ag equipment division, which manufactures seedbed preparation, nutrient placement, and seeding equipment, Great Plains Manufacturing also includes Great Plains International, Great

Plains Trucking, Great Plains Acceptance Corporation, and its Land Pride Division that manufactures grounds maintenance tools such as mowers, tillers, rotary cutters, and snow removal equipment. The company is one of the largest and fastest growing family-owned "short line" implement companies in the United States and across the world.



 SALINA CAMPUS, SALINA, KS



 ELLSWORTH PLANT  
ELLSWORTH, KS



 TIPTON PLANT  
TIPTON, KS



 UK PLANT  
SLEAFORD, UK



 CORPORATE OFFICE  
SALINA, KS



 PRODUCT DEVELOPMENT  
ASSARIA, KS



 ABILENE PLANT  
ABILENE, KS



 LUCAS PLANT  
LUCAS, KS



 KIPP PLANT  
KIPP, KS



 PRODUCT DEVELOPMENT  
ASSARIA, KS



 ENTERPRISE PLANT  
ENTERPRISE, KS



 TRUCKING DIVISION  
SALINA, KS

# Features & Benefits



**TWO GANGS OF PRO-ACTIVE DISCS** - Two rows of 600mm Pro-Active discs, one ahead of the tines and one behind, chop and incorporate high volumes of surface trash. Spaced at 250mm, the discs give improved contour following and excellent stone protection.



**EASY DISC ANGLE ADJUSTMENT** - Fully adjustable disc angling enables you to vary how aggressively the soil is worked. Select an acute angle for maximum mixing of stubble in one pass and a shallower angle to chop down ploughing when required.

### Other standard features include

- Brake options
- Full European Road Lighting Kit
- Flotation Tyres
- 3.0 Metre Transport Width

The SLD is a deeper working version of the SL cultivator. It incorporates some of the principles of the well-proven and ever popular Solo, and bridges the gap between the two machines.

Equipped with Pro-Lift hydraulic reset tines and a DD rear roller, the SLD leaves an excellent level finish, while also performing an effective loosening operation down to 300mm.

Designed using the latest computer-aided techniques, the SLD chassis is built to take the stresses and punishment of use with tractors up to 650hp in its stride – season after season, after season.

### Disc Selection



**PRO-ACTIVE DISCS** - All SLD models are fitted with Simba Pro-Active discs as standard for enhanced protection in soils with a high stone content. Disc diameter is 600mm and net disc spacing is 125mm. All discs are fitted with a rotational armoured bearing housing for enhanced protection.

### Tine Selection



**PRO-LIFT HYDRAULIC RESET TINES** - Simba's Pro-Lift hydraulic reset legs run up to 150mm deeper than the discs and to a maximum depth of 300mm.

A choice of wings can be fitted to suit soil type, conditions and trash levels.



▲ The SLD is also optionally available with Low Disturbance (LD) tines.



## Works deeper - achieves a top quality finish

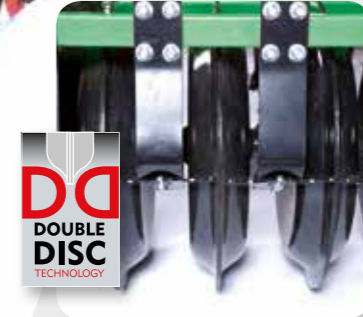
SIMBA SLD

6 | 7

**MODELS** SLD  
300, 350, 420,  
460, 540, 600

(Working widths from 2.8m - 6.0m)

### Consolidation



**DD REAR ROLLER** - The rear DD roller with shouldered press rings, consolidates the ground through to depth and leaves a ridged, weatherproof seedbed that is ready for drilling or can be left to weather over the winter. SLD 300 and 350 models come with the DD600. All other models come with the DD700 as standard. Proven one-piece scrapers are fitted as standard.

### Other options include

- Rear drawbar complete with four hydraulic pipes
- Cat 3, 4 and 5 shackle available
- Fully automated SpeedLube

### Options



**DRAWBAR & HITCH OPTIONS** - The SLD is equipped with a choice of Cat 3, 4 or 5 drawbar hitch. A rear drawbar complete with four hydraulic lines can also be specified, for pulling a single or double press in tandem with the cultivator.



**SMALL SEED APPLICATOR** - An optional factory-fitted Small Seed Applicator offers highly accurate application rates and further increases the flexibility and productivity of the SLD. A Following Harrow is also available. Ideal for OSR and cover crop establishment



▲ The SLD can also be specified with an LD Tine Frame with 500mm tine spacing



**TWO GANGS OF PRO-ACTIVE DISCS** - Two rows of Pro-Active discs, one ahead of the tines and one behind, chop and incorporate the surface trash. Spaced at 250mm, the discs give improved contour following and excellent stone protection. All discs are fitted with a rotational armoured bearing housing for enhanced protection.



**EASY DISC ANGLE ADJUSTMENT** - Fully adjustable disc angling enables you to vary how aggressively the soil is worked. Select an acute angle for maximum mixing of stubble in one pass and a shallower angle to chop down ploughing when required.



**ROAD LIGHTING** - A full European Road Lighting Kit is included as standard

Ideal for light to medium soil types and conditions, the Simba SL creates a seedbed of the highest quality. A single row of Pro-Active disc units, followed by two rows of ST or LD tines, another set of discs and a choice of five rear rollers on the SL 400, 500 and 600 models (DD 700 on SL700) really gets the job done.

The SL is able to work at shallow depths with the discs and deeper with loosening tines as two distinct operations within the machine.

Field settings are quick and easy to adjust allowing the SL to cope with various soil types, conditions and residue levels.

The design of the tine ensures a complete shatter of the soil profile at depth, without bringing clods and subsoil to the surface. The end result is a fine, level, weatherproof seedbed.

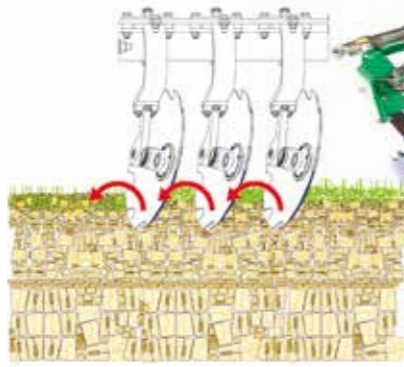


## MODELS SL 400, 500, 600, 700

(Working widths from 4.0m - 6.7m)

# A top quality seedbed in one pass

### Disc Selection



**THE FLEXIBILITY OF FULLY ADJUSTABLE DISC ANGLING** - Individually mounted discs with tilt and adjustable angling gives you more flexibility. High angles cut and mix as a primary operation, lower angles chop and consolidate as a secondary operation. A compound disc angle including tilt reduces smear and the weight needed to penetrate.



### Options



**SMALL SEED APPLICATOR** - An optional factory-fitted 8-outlet Small Seed Applicator offers highly accurate application rates and further increases the flexibility and productivity of the SL. A Following Harrow is also available. Ideal for OSR and cover crop establishment

### Other options include

- Rear drawbar complete with four hydraulic pipes
- Front drawbar in lieu of linkage pull (4,5 & 6m models)
- Brake options

### Tine Selection



**INNOVATIVE KRAVA UNIT WITH SPRUNG ST TINES** - Between 10 and 16 Shallow Tines (ST) are arranged over two rows. The design of the tine ensures a complete shatter of the soil profile at depth, without bringing clods and subsoil to the surface.



Pro-Edge Point

**PRO-EDGE POINT** - Specially designed for the Simba ST tine, the new and innovative Pro-Edge point lasts up to 50% longer than other ST points and offers substantial whole life cost-savings per hectare. Quick and easy to fit and remove.

### Bolt-On Tine Option

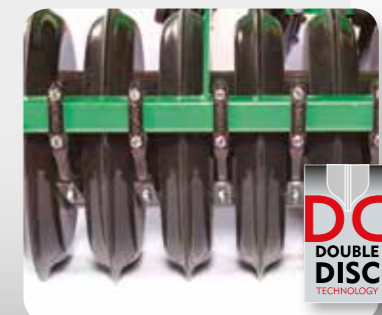


### Tines are available with the option of Shearbolt protection



**LD TINES** - This highly effective leg performs considerable cultivation and soil restructuring at depth in the root zone without disturbing or inverting any weathered tilth from the surface.

### Consolidation



**CHOICE OF REAR ROLLER** - SL 400, 500 and 600 models are available with the DDL 600 Roller (200mm or 150mm spacing), the Maxlift Roller, the V-Roller or the HD Roller, whilst the SL 700 comes as standard with the DD 700 Roller. See pages 22 - 25 to find out more about the importance of good consolidation.



# Features & Benefits



**TWO ROWS OF DISCS** - Mounted individually, the cultivation discs are 500mm in diameter. The disc spacing is 250mm on both front and rear gangs, giving a net disc spacing between gangs of 125mm. Their rotational speed is far greater than more conventional discs. Chopping and mixing is enhanced and a finer seedbed is achieved.



**FULL DISC ANGLE ADJUSTMENT** - Disc angling is fully adjustable between 0° and 25° enabling you to vary how aggressively the soil is worked and ensure good penetration.



**LIMITED DISC ANGLE ADJUSTMENT** - The X-Press is also available with limited disc angle adjustment via three fixed settings.



**DISC DEPTH ADJUSTMENT** - Easy front and rear disc depth adjustment provides even more flexibility to suit different conditions and applications



**EXCELLENT TRASH CLEARANCE** - The design of the X-Press, mounted and trailed models, results in a massive amount of clearance between both gangs of discs and the rear DD roller to ensure that it will operate in conditions with high volumes of trash.

### Other standard features include

- Full European road lighting kit

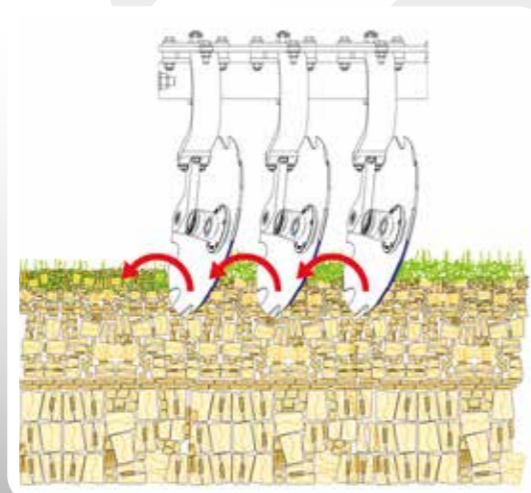


## High speed shallow cultivations – and more

### Consolidation



**CHOICE OF REAR ROLLER** - The DD Roller illustrated is just one of a number of roller options. X-Press models from 4.6 to 6.6 are available with the DD 700, DDL 600 (200mm or 150mm spacing), Maxlift, HD or V-Rollers. X-Press 8.0 and 10.0 models come as standard with the DD 700. This full width roller, with its familiar shouldered press rings, consolidates the ground through to depth, leaving a fine corrugated finish that is weatherproof in dry or wet conditions. See pages 22 - 25 for more information about our Rollers range.



### THE FLEXIBILITY OF FULLY ADJUSTABLE DISC ANGLING

- Individually mounted discs with tilt and adjustable angling gives you more flexibility. High angles cut and mix as a primary operation, lower angles chop and consolidate as a secondary operation. A compound disc angle including tilt reduces smear and the weight needed to penetrate.

A compact disc harrow with an integrated press roll, the versatile X-Press combines high speed shallow cultivations with effective consolidation. Available in 4.6m, 5.5m, 6.6m 8m and 10m widths, the Trailed X-Press can be used in reduced cultivation systems, to incorporate stubble or to work down ploughing in more

conventional regimes. The versatility of the reliable, well-proven X-Press is further enhanced by the ability to vary the angle of the discs ensuring penetration in hard conditions and eliminating the need to carry large amounts of ballast weight.

MODELS

## X-PRESS 4.6, 5.5, 6.6, 8.0, 10.0

(Working widths from 4.6m - 10.0m)



### Disc Selection



**PRO-ACTIVE DISC UNITS** - The Pro-Active disc units give improved protection against stone damage. The chrome vanadium steel mounts, with a trip height of 120mm, also offer improved contour following whilst maintaining a consistent depth at high forward speed. All discs are fitted with a rotational armoured bearing housing for enhanced protection.

### Options



A pair of Track Eradicators can be specified as an option on 4.6m, 5.5m and 6.6m models

### Other options include

- Levelling Board (8.0 and 10.0 models only)
- Rear Drawbar with hydraulic services (not 8m and 10m)
- Brake options



**ADVANCED GEOMETRY** - The drawbar is pulled from the disc axle allowing the disc angle to be altered on the move without upsetting the stability, balance and tracking of the machine.



**HYDRAULIC GANG ANGLING** - Hydraulic gang angling is only required on the front gang due to the innovative frame design.



**DEPTH CONTROL** - Positive depth control is a standard feature on 23C Series wide folding machines.



**REAR DRAWBAR AS STANDARD** - A rear drawbar, standard on 2B and 23C models, allows a DD Ring press to be towed for reconsolidation.

Simba Disc Harrows are synonymous with strength, reliability, low running costs and minimal depreciation. Experience shows offset discs continually outperform conventional disc harrows in difficult conditions and are less affected by changes in forward speed.

Simba offset discs are pulled from the disc axle bearings rather than the top-frame, enabling optimal stability in work, improved balance and correct tracking. With a Simba disc the drawbar automatically compensates for variations in gang angling thus ensuring the disc continues to pull square - particularly important with hydraulic angling. Simba discs are designed to tow either rolls or presses to improve their cultivation effect and leave a weatherproof surface.

## Proven design gives you the edge



### IDEAL FOR PRIMARY AND SECONDARY CULTIVATIONS

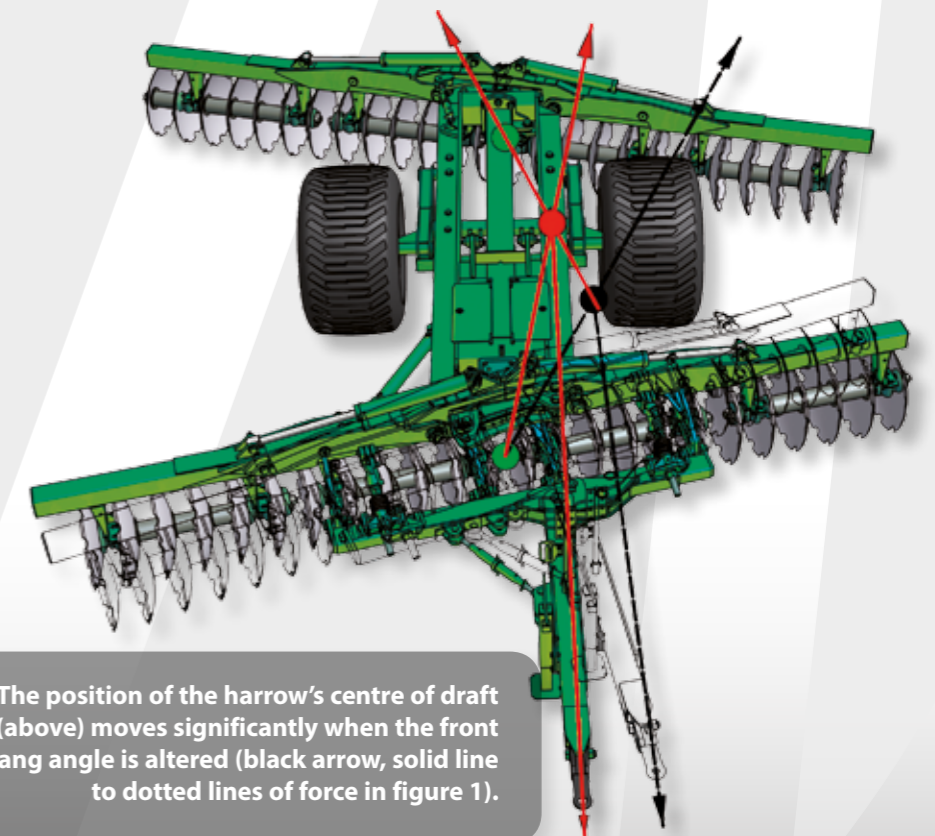
There are two ranges to choose from. With working widths ranging from 3.25m to 7.10m and a blade weight of 128kg, our Series 2B machines are ideal for primary and secondary applications. Rigid and hydraulically folding gangs are available.

Our 23C model starts at 4.4m and extends up to 7m. With a blade weight of 150kg, these discs are used predominantly for primary cultivations. The 23C features larger rear discs and wider disc spacing. This arrangement allows the machine to work deeper and more effectively in high trash conditions.



**MODELS B-SERIES**  
3.25R, 3.75R, 4.26FW, 5.11FW,  
5.58FW, 6.10FW, 7.10FW  
(Working widths from 3.25m - 7.10m)

**C-SERIES**  
4.4, 5.4, 6.15, 7.0  
(Working widths from 4.4m - 7.0m)



The position of the harrow's centre of draft (above) moves significantly when the front gang angle is altered (black arrow, solid line to dotted lines of force in figure 1).

**MODELS UNIPRESS**  
4.6, 5.5, 6.6,  
7.2, 8.2

(Working widths  
from 4.6m - 8.2m)

## The combined cultivator and press for light to medium soils

The Great Plains Simba UniPress is designed to carry out several operations in one pass on light to medium soils, saving you both time and money.

The machine features leading tines which cultivate and create a tilth ahead of the full width, fully adjustable levelling board which further works the soil, aligning clods

ahead of the in-line large diameter 700mm DD Rings. The rings crush the clods and leave a well cultivated, consolidated and weatherproof seedbed which is usually ready for drilling with no further cultivation.



### Consolidation



**DD700 REAR ROLLER** - The rear in-line DD roller with 700mm diameter DD rings ensures an even weight balance in work irrespective of ground undulations, consolidates the soil through to depth and leaves a high quality, weatherproof finish.



### Tine Selection



**PRO-ACTIVE TINES** - Simba's Pro-Active tines are mounted on a 150mm x 14mm sprung leaf which offers greater vibration and cultivation, while also protecting against stone damage by enabling the tines to trip out of the soil and re-set in work immediately.



### Options



**CRANKED TINE OPTION** - A cranked leg with a 220mm sweep tine is available where shallower work is required

### Other options include

- Rear drawbar complete with 4 pipes
- Speed-Lube (fully automated or manual centralised)
- Extending drawbar

**MODELS SINGLE PRESS**  
4.2, 4.6, 5.5,  
6.6, 7.6, 8.2

(Working widths  
from 4.2m - 8.2m)

## Simple and effective



### Options include

- Hydraulic levelling board (not available with Aqueel II roller)
- Wheel eradicators
- Telescopic drawbar in lieu of standard

This range of vertical folding, 2 section single presses is available with DD 700 or Aqueel II rollers. Designed principally to work in tandem with a primary cultivator such as a Simba SL cultivator, all models fold to a transport width of under 3m. The Simba Single Press is fitted with 400/60 x 15.5 transport wheels on 6 stud hubs.



## Features & Benefits



**LEVELLING BOARD INTERMESHES WITH DD ROLLER** - The leaves of the levelling board intermesh with the DD roller. This patented arrangement effectively aligns the clods with the sharp edge of the ring ensuring they are crushed in one pass.



**ADJUSTABLE LEVELLING BOARD** - The fully adjustable Simba levelling board can be hydraulically rotated to vary the pitch and depth of the board so as to ensure maximum effectiveness in varying soil types.



**BRAKE OPTIONS AND FULL ROAD LIGHTING KIT** - An axle brake kit (choice of Hydraulic or Air) and a full road lighting kit are fitted as standard.

## MODELS CULTIPRESS

3.3, 4.0, 4.6,  
5.5, 6.6, 8.0, 10.0

(Working widths  
from 3.3m - 10.0m)

## Features & Benefits



**LEVELLING BOARD INTERMESHERS WITH DD ROLLER** - The leaves of the levelling board intermesh with the front row of DD Rings. This patented arrangement effectively aligns the clods with the sharp edge of the ring ensuring they are crushed in one pass.



**SPRUNG LEVELLING BOARD** - The fully adjustable Simba levelling board can be hydraulically rotated to vary the pitch and depth of the board thereby ensuring maximum effectiveness in varying soil types and moisture levels. This element alone is responsible for up to 70% of the clod-breaking action of the machine.



**RIGID LEVELLING BOARD** - The CultiPress is also available with a rigid levelling board if preferred.

### Other standard features include

- Choice of Pro-Active sprung tines or rigid tines
- 50 X 25mm, shearbolt protected
- Scrapers for rear row of rings
- Brake options
- Full European road lighting kit

# It makes light work of heavy ground

The CultiPress combines three actions - cultivation, levelling and consolidation - in one well-proven package.

Cultivation at speed is provided by leading tines, either Pro-Active sprung tines or shearbolt protected rigid units. The hydraulic levelling board breaks up the clods and ensures a consistent levelling action across the full working width. Finally, two rows of DD rings consolidate and level the seedbed, leaving a ridged weatherproof surface.

A key feature of the CultiPress is the patented arrangement of the levelling board sprung leaves intermeshing with the front row of DD rings to optimise clod crushing. There are seven CultiPress models to choose from and working widths extend from 3.3m to 10m.

### Consolidation



**DD 600 REAR ROLLER** - Two rows of the renowned DD 600 Rings consolidate and level the seedbed, leaving a ridged, weather-proof finish. These rows of DD 600 Rings are 'in-line' allowing weight to be transferred rearward for greater single gang loadings in very hard, dry conditions. This ensures that even the hardest of clods are fissured.

### Tine Selection



**PRO-ACTIVE SPRUNG TINES** - Fitted as standard, Simba's Pro-Active tines are mounted on a 150mm x 14mm sprung leaf. This gives greater vibration and a more aggressive cultivating action, while also protecting against stone damage by enabling the tines to trip out of the soil and re-set in work immediately.

### Options



**CRANKED TINE OPTION** - A cranked leg with a 220mm sweep tine is available where shallower work is required



**RIGID TINES** - Available on all models except 8m and 10m machines, rigid tines can be individually adjusted using 6 different height settings so the level of cultivation can be matched to suit different needs. CultiPress models fitted with rigid tines also come with a purpose-designed levelling board.

### Other options include

- Rear Drawbar with hydraulic services (not 8m and 10m)
- Hydraulic or Air Brake options
- Speed-Lube (fully automated)
- Speed-Lube (manual centralised) not 8m and 10m
- Cat 3 and 4 drawbar shackle options



## MODELS DOUBLE PRESS

4.6, 5.5, 6.6,  
7.6, 8.2

(Working widths  
from 4.6m - 8.2m)

## Quality specification



Designed to complement disc harrows or deeper working cultivators, Great Plains offers a full range of Simba Double Presses ranging from 4.6m to 8.2m. All are fitted with two rows of intermeshing 600mm diameter DD Rings and flotation tyres. Standard features also include remote greasing for bearings, road lights, hydraulic folding options and hydraulic brakes. All models above fold hydraulically to a transport width of under 3m.

### Options include

- Rigid front leading tines (tine spacing 300mm)
- Rear drawbar c/w 4 pipes
- Speed-Lube (fully automated)
- Speed-Lube (manual centralised)
- Brake options



**ROBUST GANG DESIGN** - The rugged gang design features concave or Turbo blades on 200mm spacing and improved scraper design.



**SELF-LEVELING HITCH** - The Disc-O-Vator features a clean, slim profile, self-leveling hitch design with turnbuckle height leveling adjustment.



A finishing tool that works superbly in conventional tillage regimes following a Plough, Disc Harrow, Turbo-Chisel or Sub-Soiler, the Disc-O-Vator prepares a seedbed ready for drilling. You can use it for maintenance too.

Tines arranged in a 5-gang pattern follow on and pull the roots of the weeds to the surface. The vibrating action loosens the soil off the root balls to kill the weeds, which are left on the surface to dry out.

Disc blades mounted on hydraulically adjustable disc gangs cut into the soil and loosen weeds from 0 - 75mm in depth.

In many places, the Disc-O-Vator is also used to incorporate broadcast fertiliser, chemicals or manure into the field.

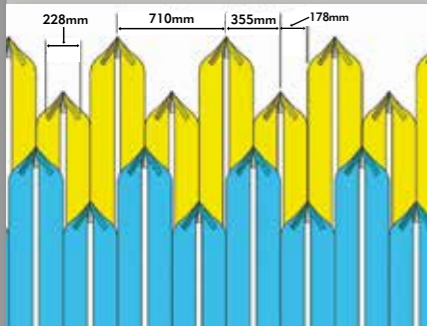
**MODELS** **DISC-O-VATOR**  
8315DVN, 8318DVN,  
8321DVN, 8324DVN

(Working widths from 4.9m - 7.3m)



## Outstanding productivity

### MAX-MIX



The Max-Mix tine pattern increases chemical incorporation, reduces windrowing and helps eliminate banding. No two tines are closer than 710mm on the same bar (620mm from bar to bar). The effective tine spacing is 180mm. An overlap of 25mm on each side of the tine ensures complete weed removal.

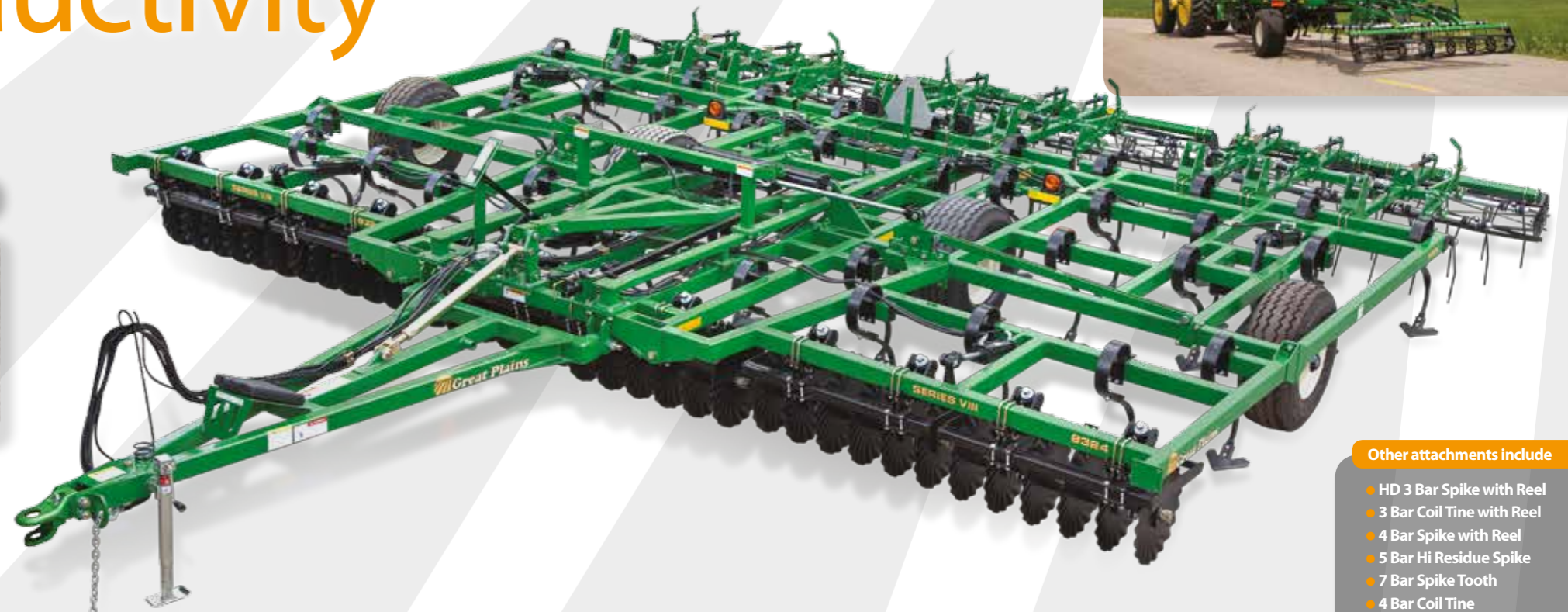
### Disc Selection



**TURBO COULTERS** - The Turbo Coulters chop residue and loosen the soil for the following deeper-working tines. Turbo gangs allow faster ground speed and contribute to increased productivity. The working depth can be hydraulically adjusted from the tractor.



**LOW CONCAVITY DISC BLADES** - The front disc gang comes with 510mm diameter concave blades that increase the mixing action with the soil and incorporate more trash.



### Other attachments include

- HD 3 Bar Spike with Reel
- 3 Bar Coil Tine with Reel
- 4 Bar Spike with Reel
- 5 Bar Hi Residue Spike
- 7 Bar Spike Tooth
- 4 Bar Coil Tine

### Tine Selection



**HEAVY-DUTY MAGNUM TINE** - This unit features a spring that gives 93kg of point pressure. The heavy spring provides good vibrating action. Its ability to 'unhook' from obstructions makes it a good choice in stony soils.



**HEAVY-DUTY K-FLEX TINE** - With a 16 x 76mm upper leaf spring and a 16 x 45mm lower leg giving 85kg of point pressure, this tine has the strength to penetrate and stay level at higher speeds while minimising side play.

### Options

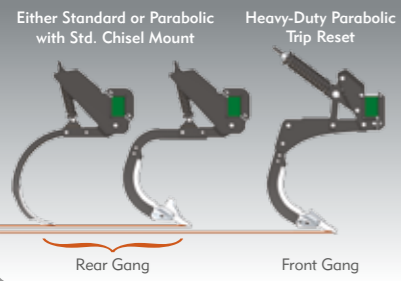


Following Harrow



HD 3 Bar Spike with Reel

# Features & Benefits



**TURBO-CHISEL TINE CONFIGURATION OPTIONS** - The 131.8 x 76mm parabolic leading leg runs 38mm deeper than the rear leg or it can be set to run at the same depth. The rear legs split at an effective 380mm spacing remove compaction layers and reset the soil profile.



**ROLLING CHOPPER WHEEL** - The highly innovative and award-winning Rolling Chopper Wheels chop residue while filling the rear leg's furrow to provide the optimum level surface. The Rolling Chopper Wheels angle towards one another to maximize their sealing action increasing moisture retention of the finished soil.

## Tills up to 300mm deep



### Options



**BUSTER BAR** - The buster bar, which can be specified instead of the rolling chopper wheel, is a robust drag attachment that aggressively breaks up soil and levels residue. It is ideal for use in stony conditions.

The Turbo-Chisel is a proven combination of chopping, mixing and leveling, while always working the soil vertically, never horizontally. This efficient and effective unit gives you the flexibility of tilling down to depths of 300mm and can be configured to suit any soil and residue conditions.

Adjustable heavy-duty parabolic trip reset tines spaced at 760mm work down to depths of 200-300mm and

are followed by another set of either medium-duty parabolic chisel legs or standard chisel legs also at 760mm spacing. The staggered front and rear legs give a net tine spacing of 380mm.

If your goal is to size and incorporate residue in the top 100-125mm of top soil, while leaving the soil level enough for a single pass operation in the spring, the Turbo-Chisel is the tool of choice.



## MODELS TURBO-CHISEL TCN5107, TCN5309, TCN5311, TCN5313

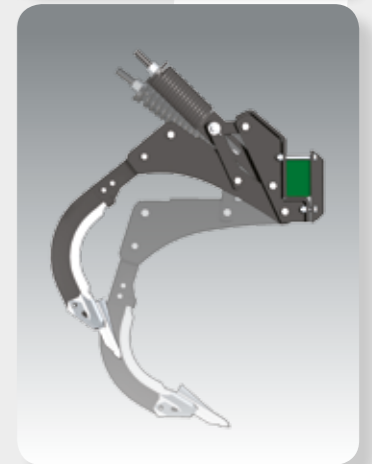
(Working widths from 2.7m - 4.9m)

### Disc Selection



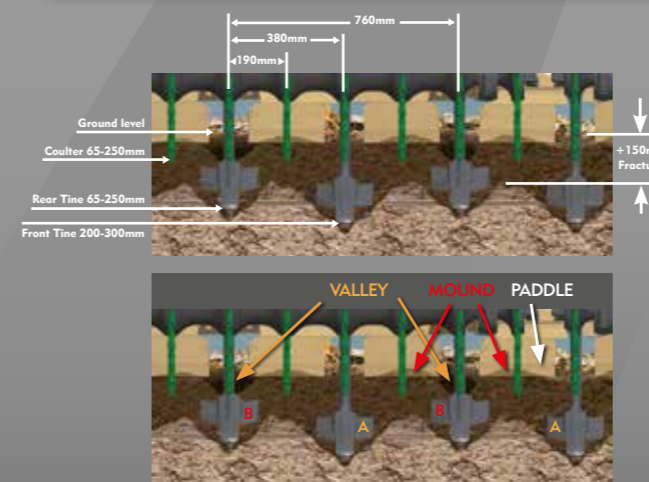
**56cm PATENTED TURBO COULTER** - Mounted to a hydraulically controlled toolbar and set at 19cm spacing, this exclusive coulters design features an innovative flute pattern on the blade which enters the soil vertically and exits horizontally. This design delivers the best results in terms of both chopping residue and mixing soil down to 15cm deep.

### Tine Selection



**HEAVY-DUTY TRIP RESET TINE** - This rugged, hard-wearing tine has a horizontal trip force of 1,111kg (2,450lbs) and will automatically reset when tripped. Spaced at 76cm they work down to depths of 20-30cm. A 17.78cm winged point lifts and shatters the soil sideways.

### HOW THE TURBO-CHISEL WORKS

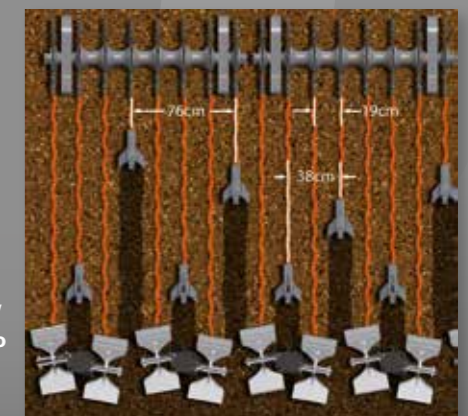


A = Front row of tines run about 1.5 inches/35 mm deeper than rear tines.

B = Rear tines leave a hole or valley behind them left and right of them and a raised mound off their wings..

C = The paddle is angled to move soil back from the mound into the valley. It cuts clods and residue down.

Coulters cut the residue into 190mm long pieces and cultivate a strip of ground, fracturing the soil ahead of themselves. Two rows of tines follow 0in line with the coulters to minimise plugging. Spaced at 380mm they ensure fracture across the soil profile from 200-300mm depth. The rear paddles chop the surface residue and push the soil back into the tine furrow to level the surface. They are angled to maximize their sealing action behind the tine, preventing moisture loss.





# The need for consolidation

Effective consolidation plays a crucial, but often under-appreciated part in modern arable farming. As part of a reduced tillage regime, it can save valuable time, reduce costs and increase yields. Fundamentally, it plays a key role in combating the problem of compaction, which is a barrier to root growth and water infiltration and a major factor in poor soil structure leading to run-off and erosion.

## Pioneers in Consolidation technology

With many years of experience in developing innovative roller technology, Great Plains offers a range of components that are proven to produce excellent results on a wide range of soil types and ensure users achieve the full benefits of good consolidation. These include:



- Effective soil to seed/root contact to enable efficient nutrient transfer
- Minimal moisture loss, especially important in dry years where crops which lack moisture suffer badly
- Improved drainage and water infiltration, especially important in

- wet years where a good, consolidated soil structure ensures access to plant root systems for water, air and nutrients
- Reduced soil erosion, as the soil is both structured and stable - an essential consideration for farmers

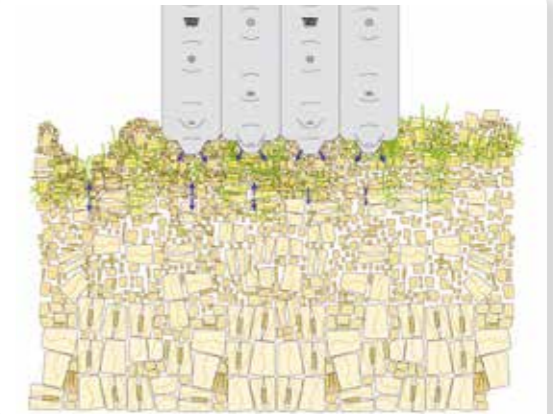
## AQUEEL II

### Consolidates the seedbed protects against erosion

The Great Plains Simba Aqueel II enables farmers to consolidate seedbeds after drilling and optimise crop performance. It minimises moisture loss, facilitates improved drainage and water infiltration and ensures excellent soil to seed/root contact, while also protecting soil against erosion at a time when it generally has no green cover and is at its most vulnerable.

*The Aqueel II helps to conserve moisture in two distinct ways.*

1. It presses a lattice of small indentations in the soil surface creating small reservoirs which prevents lateral water movement
2. The roller can be used immediately after drilling to maximise moisture conservation



### Unique design creates water retaining 'saucers'

Durable rubber teeth are fixed to a rubber carcass. As well as crushing clods, these teeth press small reservoirs in the soil that catch water and retain it on the seedbed, preventing it from running off and carrying valuable soil, residual chemicals and nutrients with it. The saucers with their central divot do not inhibit emergence – plants emerge straight through them.

**MACHINES AVAILABLE WITH AQUEEL II AS A REAR ROLLER OPTION**

Single Press - see page 15

### HD ROLLER



This cost-effective, durable, fully welded steel roller with 'zone' consolidation is designed for minimal maintenance. It is ideal for use in rough ground conditions and soils with high stone content.

### V-ROLLER



With its 'V' shaped profile to the wheels which fill with soil in use to achieve soil-soil wearing, the V-Roller lifts soil and stays cleaner on the inside compared with similar U-shaped rollers. This roller works well with or without scrapers, depending on the conditions. Light in weight, it enables the use of smaller tractors with mounted machines.

### MAXLIFT ROLLER



A combination of notched wheels and teeth for driving and lifting high volumes of soil, the Maxlift Roller gives a fine finish whilst still consolidating the ground just below the surface. This roller achieves a good mixing effect at high speed.

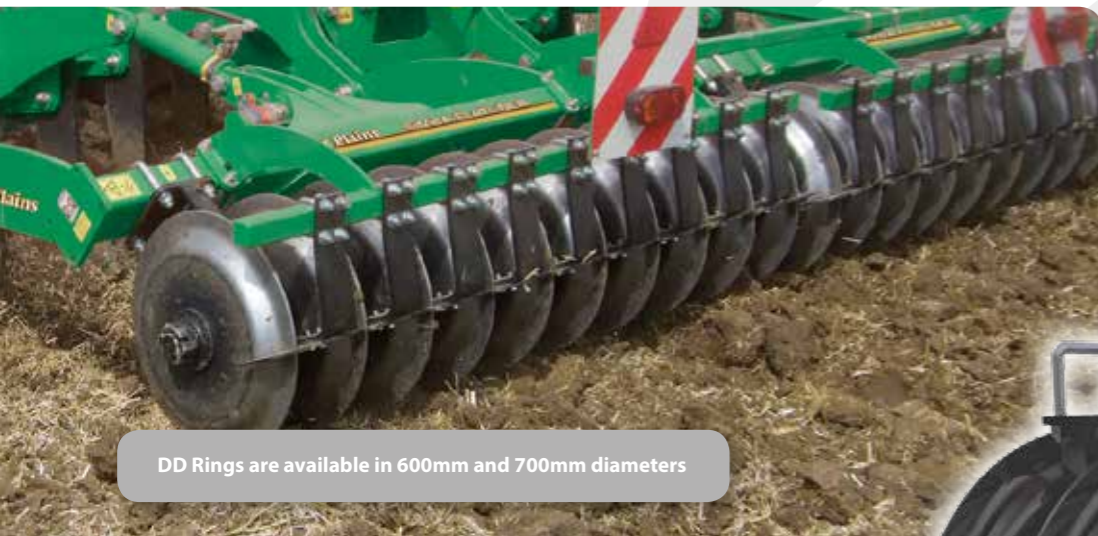
**MACHINES AVAILABLE WITH HD, MAXLIFT AND 'V' ROLLERS AS A REAR ROLLER OPTION**

SL 400/500/600 - see pages 8 & 9  
X-Press (4.6 - 6.6m models) - see pages 10 & 11



# DD Ring

Setting the standard for **press efficiency**

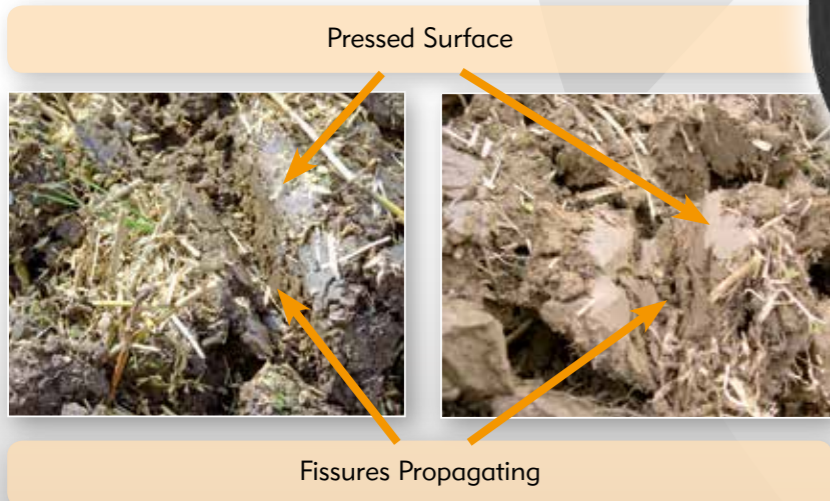


DD Rings are available in 600mm and 700mm diameters

Widely accepted as one of the best consolidation systems capable of working in all soil types, Great Plains Simba DD Press Rings set the standard for pressing efficiency and remain unique both in their patented design and their performance.



- MACHINES AVAILABLE WITH DD REAR ROLLER**
- As an Option
    - X-Press 4.6, 5.5 & 6.6 - see pages 10 & 11
    - Single Press - see page 15
  - As Standard
    - SLD - see pages 6 & 7
    - SL700 - see pages 8 & 9
    - X-Press 8.0 & 10.0 - see pages 10 & 11
    - UniPress - see pages 14 & 15
    - CultiPress - see pages 16 & 17
    - Double Press - see page 17

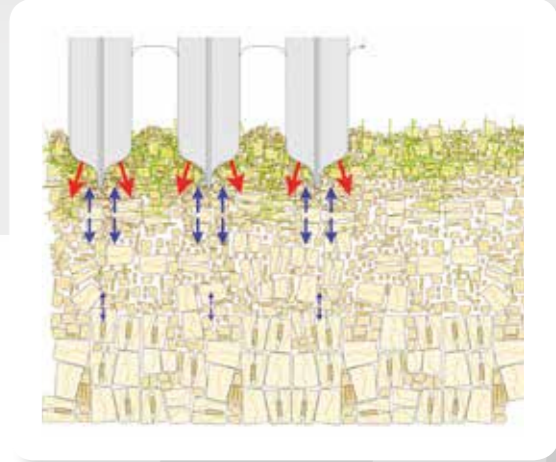


## DD Effect



Clods are cut and fissures propagate through a result of the DD action, Broken or cracked clods are left in an ideal state for further weathering

Manufactured from the highest quality Boron steel, the rings have a self-sharpening cutting edge mounted on a broad, carefully angled shoulder. This enables them to cut clods effectively, crushing the parted halves so they disintegrate, while also contacting over 80% of the soil surface so they consolidate and level the seedbed, leaving a ridged, weather-proof surface.



The relationship between DD ring spacing, diameter and width optimises soil consolidation. The DD roller achieves a weatherproof surface which maintains soil moisture in dry conditions and allows good drainage in wet conditions, thus avoiding soil erosion.



## DD Lite

Light consolidation with **mounted machines**

Ideal for mounted machines on lower hp tractors, the DD Lite is available in 550mm and 600mm diameters. Lighter in weight, the DD Lite shares the same unique features of the DD Ring including the unique axle tensioning system with steel spacers between the rings, which allows the roller to 'self-adjust' as it wears, maintaining its effectiveness.

- MACHINES AVAILABLE WITH DD LITE AS A REAR ROLLER OPTION**
- SL 400/500/600 - see pages 8 & 9
  - X-Press 4.6, 5.5 & 6.6 - see pages 10 & 11



These pictures show a typical DDL 600 surface tilth, ideal for seeding onto and surface rolling after.

# TRAILED TILLAGE EQUIPMENT

## Product Specifications



SIMBA SLD							
Model	Working Width (m)	Transport Width (m)	No. of Tines	Tine Spacing (mm)	No. of Discs	Guide Weight (Kg)	Power Req (hp)
SLD 300	2.8	3.0	5	560	22	5,265	180-320
SLD 350	3.3	3.52	5	660	26	5,625	200-350
SLD 420	4.2	3.0	7	600	34	9,700	300-650
SLD 460	4.6	3.0	7	665	36	9,900	300-650
SLD 540	5.4	3.0	9	600	44	11,100	300-650
SLD 600	6.0	3.0	9	665	48	11,600	400-650



SIMBA SL					
Model	Working Width (m)	Transport Width (m)	No. of Tines	Guide Weight (kg)	Power Req (hp)
SL 400	4.0	3.0	10	5,850	200 - 360
SL 500	5.0	3.0	12	7,400	250 - 420
SL 600	6.0	3.0	14	8,400	300 - 420
SL 700	6.7	3.0	16	11,500	400 - 600



SIMBA TRAILED X-PRESS					
Model	Working Width (m)	Transport Width (m)	No. of Discs	Guide Weight (kg)	Power Req (hp)
XP 4.6	4.6	2.95	36	5,540	140-180
XP 5.5	5.5	2.95	44	6,350	160-220
XP 6.6	6.6	2.95	52	7,570	200-260
XP 8.0	8.0	2.95	62	11,500	300-420
XP 10.0	10.0	2.95	80	14,000	350-480

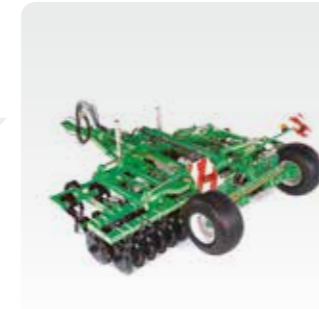


SIMBA DISC HARROWS				
B Series	Working Width (m)	Transport Width (m)	No of Discs	Power Req (hp)
DH 3.25 (R)	3.25	3.40	25	110-140
DH 3.75 (R)	3.75	3.90	29	130-170
DH 4.26 (FW)	4.26	3.00	35	150-200
DH 5.11 (FW)	5.11	3.00	39	155-230
DH 5.58 (FW)	5.58	3.00	43	180-260
DH 6.10 (FW)	6.10	3.00	49	240-320
DH 7.10 (FW)	7.10	3.00	57	280-380

C Series	Working Width (m)	Transport Width (m)	Disc Blades Front	Disc Blades Rear	Power Req (hp)
DH 4.4	4.4	2.95	17	15	190-260
DH 5.4	5.4	2.95	21	19	250-360
DH 6.15	6.15	2.95	24	21	280-400
DH 7.0	7.0	2.95	28	24	300-450



SIMBA UNIPRESS					
Model	Working Width (m)	Transport Width (m)	No. of Pro-Active Tines	Guide Weight (kg)	Power Req (hp)
UP 4.6	4.6	3.0	15	4246	120-170
UP 5.5	5.5	3.0	17	4775	140-190
UP 6.6	6.6	3.0	21	5276	150-220
UP 7.2	7.2	3.0	23	6135	180-240
UP 8.2	8.2	3.0	27	6638	200-260



SIMBA CULTIPRESS						
Model	Working Width (m)	Transport Width (m)	No. of ProActive Tines	No. of Rigid Tines	Guide Weight (kg)	Power Req (hp)
CP 3.3	3.3	3.45	11	13	3,480	115 - 160
CP 4.0	4.0	4.15	13	17	3,910	140 - 190
CP 4.6	4.6	2.95	15	19	5,660	160 - 220
CP 5.5	5.5	2.95	19	23	6,630	195 - 260
CP 6.6	6.6	2.95	21	27	7,220	230 - 310
CP 8.0	8.0	2.95	25	n/a	10,500	300 - 420
CP 10.0	10.0	2.95	35	n/a	13,000	380 - 480



GREAT PLAINS DISC-O-VATOR						
Model	Working Width (m)	Transport Width (m)	No. of Tines	No. of Discs	Guide Weight (kg)	Power Req (hp)
8315DVN	4.9	3.0	27	22	3016	115 - 135
8318DVN	5.6	3.0	31	28	3630	135 - 155
8321DVN	6.3	3.0	37	32	4180	155 - 180
8324DVN	7.3	3.0	41	36	4990	180 - 200



GREAT PLAINS TURBO-CHISEL						
Model	Working Width (m)	Transport Width (m)	No. of Coulters	No. of Tines	Guide Weight (kg)	Power Req (hp)
TCN5107	2.7	2.7	15	7	3311	140 - 210
TCN5309	3.5	3.0	19	9	4762	180 - 270
TCN5311	4.2	3.0	23	11	5216	220 - 330
TCN5313	4.9	3.0	27	13	5488	260 - 390



SIMBA SINGLE PRESS			
Model	Working Width (m)	Aqueel II Guide Weight (kg)	DD Rings Guide Weight (kg)
SP 4.2	4.2	1,680	2,050
SP 4.6	4.6	1,850	2,225
SP 5.5	5.5	2,220	2,660
SP 6.6	6.6	2,650	3,000
SP 7.6	7.6	3,050	3,450
SP 8.2	8.2	3,300	3,725



SIMBA DOUBLE PRESS			
Model	Working Width (m)	Transport Width (m)	Guide Weight (kg)
DP 4.6	4.6	3.0	3,680
DP 5.5	5.5	3.0	4,400
DP 6.6	6.6	3.0	5,280
DP 7.6	7.5	3.0	6,000
DP 8.2	8.2	3.0	6,560

All working widths and guide weights are approximate depending on machine configuration and settings



# Make Ownership a Reality

Ask your Dealer for details of competitive part-exchange deals and tailored finance options.

DEALER STAMP



**Great Plains UK Ltd.,**  
Woodbridge Road, Sleaford,  
Lincolnshire. NG34 7EW. England  
**Tel:** +44 (0)1529 304654 **Fax:** +44 (0)1529 413468  
**E-Mail:** [simba@greatplainsmfg.com](mailto:simba@greatplainsmfg.com)  
**[www.greatplainsmfg.co.uk](http://www.greatplainsmfg.co.uk)**

**Great Plains International,**  
1525 East North Street,  
Salina, Kansas 67401-5060 USA  
**Tel:** +1-785-823-3276 **Fax:** +1-785-822-6722  
**E-Mail:** [gpi@greatplainsmfg.com](mailto:gpi@greatplainsmfg.com)  
**[www.greatplainsint.com](http://www.greatplainsint.com)**

Great Plains UK Limited, reserves the right to vary specifications with or without notice at such times and in such a manner as deemed appropriate. Major as well as minor changes may be involved. Every effort, however, is made to ensure the accuracy of the particulars contained in this brochure. Consult your Great Plains Dealer for details regarding the specifications of any product. All sales are made by the Distributor or Dealer subject to and with the benefit of the Standard Conditions of Sale and Warranty provided by the Distributor or Dealer, copies of which may be obtained on request.